



SINCLAIR CATTLE  
COMPANY, INC.

# 20<sup>TH</sup> ANNUAL PRODUCTION SALE

MARCH 23, 2024 1:00 PM BUFFALO, WYOMING



*Kate Linn*

*Genetics for  
the Long Haul*

# 20<sup>TH</sup> ANNUAL PRODUCTION SALE

MARCH 23, 2024 1:00 PM BUFFALO, WYOMING

Welcome Cattlemen and Cattlewomen,

It is our pleasure to invite you to Sinclair Cattle Company's 20th Bull & Female Production Sale at Buffalo Livestock Marketing in Buffalo, Wyoming on Saturday, March 23, 2024. It's the great repeat buyers and new customers we have had the opportunity to meet along the way that make it possible for us to offer this set of bulls and females. We want to personally thank all of you for the privilege and opportunity to be a part of your seedstock selection.

**11:30 am Lunch | 1:00 pm Sale Begins**  
**Selling 135 Yearling Angus BULLS**  
15 Registered Heifers • 65 Reputation  
Commercial Open Replacement Heifers

The bulls being offered sale day are the top end of 250 head weaned the end of September. They have endured a strict culling process for fertility, structural soundness, and genetic merit, which continues right up to the time they walk into the sale ring. We follow this same process on the cowherd. Staying true to the Legacy is more than a slogan to the Sinclair Team; it's our mission and responsibility to keep building on the Emulation genetics which are the foundation of our herd.

It is an honor and our job as stewards of these genetics to ensure the quality the Elliott family started at the N Bar Ranch lives on.

We continue to evaluate our own line bred sires in our herd. We have also added some outside sires including Reisig Longmire, KG Justified, and Connealy Gary. The first daughters out of these bulls are proving to be great mothers and a very good addition to the Emulation Line.

The Bulls were fed at Veltkamp Feedlot on a high roughage diet. Phil always does an outstanding job for us. The bulls and the registered heifers will be at the feedlot until Thursday, March 21st at which time we will move them to Buffalo. You are more than welcome to look at them at the feedlot or Buffalo Livestock Auction where the bulls will be penned and ready for viewing late Thursday afternoon.

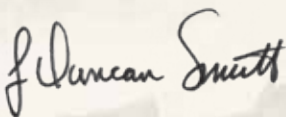
The small select group of registered heifers we are offering were primarily selected on pedigree and performance. They will be at Buffalo Livestock Marketing on Thursday afternoon, as well.

The commercial heifers are the middle cut from the registered cowherd. They will remain at the feedlot in Manhattan, MT and will be shipped from there after the sale. Arrangements can be made with Phil Veltkamp to have him AI the heifers at buyer's cost. Please make AI arrangements through Logan Baker. A video of the heifers will be available on Sinclair's website. We are confident they will make great cows.

Sinclair Cattle Company is working hard to earn your Business, by making the improvements our customers have discussed with us. We feel the cattle being offered exhibit profit building traits and predictable performance to enhance your genetic program.

We truly appreciate your business and look forward to seeing you on Sale Day. Stop by anytime, visitors are always welcome.

Sincerely,



J Duncan Smith, Owner



**SINCLAIR CATTLE  
COMPANY, INC.**

FRED SAUNDERS  
406-788-9331

LOGAN BAKER  
307-254-1477

LANCE CLINE  
785-564-1744

STEVE BLANKLEY II  
240-625-5415

MIKE BAZZLE  
540-421-7411

# SALE INFORMATION

## AUCTIONEER

Roger Jacobs 406-698-7686

## SALE DAY DIRECT BID SINCLAIR REPRESENTATIVE PHONES

Fred Saunders 406-788-9331  
Logan Baker 307-254-1477  
Lance Cline 785-564-1744  
Steve Blankley II 240-625-5415  
Mike Bazzle 540-421-7411

## BIDS

Buyer may call or send their bids to any of the sale professionals listed above or directly to Sinclair Cattle Company. Complete satisfaction is guaranteed for cattle purchased sight unseen as well as all bulls sold.

## SALE LOCATION

Buffalo Livestock Marketing, Buffalo Wyoming

## VIDEOS

Videos of the sale offering available at [www.sinclaircattle.com](http://www.sinclaircattle.com) and [dvauction.com](http://dvauction.com)

## TERMS & CONDITIONS

Cash. All cattle sell under the standard terms & conditions as adopted by the American Angus Association printed in the back of this book.

## INSURANCE

Mortality Insurance representatives will be available sale day.

## SALE BLOCK

All announcements from the sale block on sale day take precedence over material printed in this sale book.

## SALE ORDER

Cattle will sell in catalog order. Updates will be posted on website and social media. This catalog represents the results of careful selection of this sale offering. We invite you to bid with confidence.

## FOOD

Coffee and donuts in the morning. A beef lunch provided starting at 11:30 am. Snacks and refreshments available Friday while viewing.

## CONVENIENCE BUYING

### Online Bids

DV Auction & Cattle USA

See inside back cover for details

**Donation Lot is 100% giving to  
4H and FFA**

scan this code



This is where you will be able to view videos when they are ready.

## BUFFALO LIVESTOCK MARKETING

Sale Day Phone 307-684-0789

## LIVESTOCK PUBLICATION REPS

Kurt Kangas	406-366-4190	American Angus Association
Curt Cox	307-630-4604	Wyoming Livestock Roundup
Devin Murnin	406-696-1502	Western Livestock Journal
Dennis Ginkens	406-670-9839	Western Ag Reporter
Alan Sears	970-396-752	Western Ag Reporter
Wrye Williams	605-580-5315	TriState Livestock News
Jeff Thomas	406-581-8859	Prairie Star

## FREE DELIVERY TERMS

- A **\$100/head discount** will be given if buyer hauls on sale day.
- Sinclair Cattle Company offers free delivery in Wyoming and bordering states **to a central stockyard point or dropoff location** on all bull purchases. Beyond that, bulls will be delivered at cost.
- Sinclair Cattle Company will help coordinate delivery and keep costs as low as possible. The trucking bill will come from Sinclair Cattle Company.
- For our customers from the Northeast and East, cattle will be delivered to Sinclair Cattle Company's Warfordsburg, PA location and delivery will be coordinated from there. Call Steve Blankley II for further details.
- Bulls will be delivered as promptly as possible.

## GUARANTEE

Guaranteed customer satisfaction, with a "No Holds Barred" guarantee on the bulls through the first breeding season. Breeding season consists of 90 days from turnout. Contact a Sinclair Cattle Company Representative as soon as possible after finding an injury. We recommend Mortality Insurance against death.

## VOLUME DISCOUNTS

5% discount on 5 or more bulls and 10% discount on 10 or more bulls

## RETAINING INTEREST

Sinclair Cattle Company is retaining one-third semen revenue sharing interest in each individual bull in the sale unless otherwise stated.

## AIRPORTS SERVING BUFFALO, WYOMING:

Johnson County Airport, Buffalo	307-684-9672
Campbell County Airport, Gillette	307-686-1042
Sheridan County Airport, Sheridan	307-674-4222
Natrona County Airport, Casper	307-472-6688
Billings Logan International, 169 miles	2hr 40 min. drive

## EPDS

EPDs current as of 2/19/24

Visit [buffalowyo.com](http://buffalowyo.com) to view places to dine and tour in and around Buffalo, Wyoming.



Special room rates have been arranged. Call 307-684-8899 by 3/21/23 to reserve your room.

## HOTELS:

These are all within a block or within walking distance of one another.

<b>Hampton Inn and Suites</b>	<b>307-684-8899</b>
Holiday Inn Express	307-684-9900
SureStay Plus Hotel	307-684-9564
The Super 8	307-684-2531
Buffalo Inn	307-684-7000
Rodeway Inn	307-684-5505
<b>Downtown</b>	
The Historic Occidental Hotel	307-684-0451
The Big Horn Motel	307-684-7822
The Mansion House Inn	307-684-2218

# Donation



With utmost gratitude, Sinclair Cattle Company supports our youth in agriculture. We are pleased to donate 100% of the proceeds of this semen offering equally to the Wyoming State 4H Foundation and Wyoming FFA Foundation.



**10 STRAWS**

N Bar Primetime D806 REG: 12557724



**10 STRAWS**

Sinclair Executive 9XV2 REG: 16365949



**10 STRAWS**

Sinclair Rito Legacy 3R9 REG: 14378386



**10 STRAWS**

Sinclair Emulation 5522XP REG: 15696693



**10 STRAWS**

Sinclair Cloud Peak 504 REG: 18313179



*Rate Note*



### SINCLAIR LONGMIRE L505

REG: \*20833609 | DOB: 02/01/23 | TATTOO: L505

S A V Renown 3439#  
**Reisig Longmire 8326** 19448009  
 BUF Eriskay 7417

Sinclair Exactly 4U2  
**Sinclair Enchantress OURS** 20045454  
 Sinclair Enchantress 853#

Rito 707 of Ideal 3407 7075  
 S A V Blackcap May 4136  
 N Bar Emulation EXT#  
 J Bar 7 Eriskay Q13-71K1#  
 Sinclair Executive 9XV2  
 Sinclair Lady 0R109 03S3  
 N Bar Shadow X4124  
 Sinclair Enchantress 6PV33

Individual Performance					EPD's				
BW	ADJ. WW	WR	ADJ. YW	YR	CED	BW	WW	MILK	YW
80	613	108	1167	113	7	-0.3	44	22	82
Individual Performance				Mat	\$ Values				
ADG	Act. IMF	REA/100 lbs		\$EN	\$M	\$W	\$F	\$G	\$B
3.39	2.73	1.08		-3	68	40	48	11	59

**Dam's Production** WR: 2 @ 109 YR: 1 @ 113

Potential herd sire, that comes from a great young cow and cow family, Grandam boasts BR 12-98, WW 12-103, YR 10-102, Great Grandam BR 5-98, WR 5-101, YR 4-105

## Genetics for the Long Haul



### REF SIRE REISIG LONGMIRE 8326

REG: +19448009 | DOB: 08/30/18 | TATTOO: 8326

Rito 707 of Ideal 3407 7075  
**S A V Renown 3439** 17633839#  
 S A V Blackcap May 4136

N Bar Emulation EXT#  
**BUF Eriskay 7417** 16118882  
 J Bar 7 Eriskay Q13-71K1#

R R Rito 707#  
 Ideal 3407 of 1418 076  
 S A V 8180 Traveler 004#  
 S A V May 2397#  
 Emulation N Bar 5522#  
 N Bar Primrose 2424  
 Sitz Traveler 8180#  
 E F Eriskay Q13 7107

CED	BW	WW	YW	SC	MILK	DOC	MARB	REA	\$M	\$W	\$F	\$B	SC
10	-1.9	35	68	.93	21	18	.04	.54	62	34	45	66	148

Longmire was purchased from Reisig Cattle to add the Rito influence while still enhancing EXT to another generation. His proven dam carried a stacked pedigree of proven maternal and performance giants for many generations. His first daughters are now in production and are the favorite sire group of 2 yr olds. Don't overlook the Longmire sons! Proudly owned with Reisig Cattle, Gerstell Farms



*Kate Loose*

2



**SINCLAIR LONGMIRE L507**

REG: \*20833626 | DOB: 02/05/23 | TATTOO: L507

S A V Renown 3439#  
**Reisig Longmire 8326** 19448009  
 BUF Eriskay 7417

Sinclair Black Iron 8UR17  
**Sinclair Lady Ida 0EU5 8XV12** 20045468  
 Sinclair Lady Ida 8XV12 C52#

Rito 707 of Ideal 3407 7075  
 S A V Blackcap May 4136  
 N Bar Emulation EXT#  
 J Bar 7 Eriskay Q13-71K1#  
 Sinclair Exactly 4U2  
 Sinclair K BTY 6E4 A3  
 N Bar Emulation Ext V722  
 N Bar Lady Ida Z1453

Individual Performance					EPD's				
BW	ADJ. WW	WR	ADJ. YW	YR	CED	BW	WW	MILK	YW
82	587	102	1107	108	4	0.1	41	24	77
Individual Performance				Mat	\$ Values				
ADG	Act. IMF	REA/100 lbs	\$EN	\$M	\$W	\$F	\$G	\$B	
3.87	3.19	1.18	3	71	39	57	31	88	

**Dam's Production** WR: 2 @ 99 YR: 1 @ 108

Lot 2 comes from a good young cow out of the great Donor cow 8XV12 boosting 11-102 BR, 11-109 WR, 10-107 YR.



**SINCLAIR LONGMIRE L625**

REG: \*20833640 | DOB: 02/20/23 | TATTOO: L625

S A V Renown 3439#  
**Reisig Longmire 8326** 19448009  
 BUF Eriskay 7417

N Bar Emulation EXT#  
**Sinclair Pamella 0X11 F271** 20559910  
 Basin Pamella F271

Rito 707 of Ideal 3407 7075  
 S A V Blackcap May 4136  
 N Bar Emulation EXT#  
 J Bar 7 Eriskay Q13-71K1#  
 Emulation N Bar 5522#  
 N Bar Primrose 2424  
 Basin Rainmaker 654X#  
 Basin Pamella 676X#

Individual Performance					EPD's				
BW	ADJ. WW	WR	ADJ. YW	YR	CED	BW	WW	MILK	YW
82	588	104	1047	102	5	0.0	37	27	68
Individual Performance				Mat	\$ Values				
ADG	Act. IMF	REA/100 lbs	\$EN	\$M	\$W	\$F	\$G	\$B	
3.71	2.42	1.24	4	58	39	57	22	79	

**Dam's Production** WR: 2 @ 111 YR: 2 @ 107

Nice Longmire son out of a young EXT - Rainmaker 654 X daughter, Grandam 7-108 BR, 7-114 WR, 7-104 YR.





4



### SINCLAIR GARY L3

REG: \*20872799 | DOB: 02/11/23 | TATTOO: L3

Connealy Niobrara 5451  
**Connealy Gary** 18869442  
 Hertha of Conanga 1639

Sinclair Promise 6RE2  
**Sinclair Lady 9PR3 4A4** 19475303  
 Sinclair Lady 4A4 2G21#

Connealy Confidence Plus#  
 Britha of Conanga 167  
 Connealy Consensus#  
 Herra of Conanga 4462  
 Sinclair Promise 4RP15  
 Sinclair Primrose 1V2 145K  
 Emulation 31#  
 Sinclair Lady 2G21 7004

#### Individual Performance

BW	ADJ. WW	WR	ADJ. YW	YR	CED	BW	WW	MILK	YW
79	641	114	1167	117	6	0.1	60	23	110

#### Individual Performance

ADG	Act. IMF	REA/100 lbs	\$EN	\$M	\$W	\$F	\$G	\$B
2.90	3.75	1.03	-14	58	51	82	42	124

**Dam's Production** WR: 3 @ 104 YR: 2 @ 111

#### EPD's

BW	WW	MILK	YW
60	23	110	110

#### Mat

\$ Values
124

A well bred Gary son, that traces back to an outstanding Emulation 31, Grassmaster bred cow, with a bonus of A1747 on the topside.



### REF SIRE CONNEALY GARY

REG: 18869442 | DOB: 01/21/17 | TATTOO: 7293

Connealy Confidence Plus  
**Connealy Niobrara 5451** 18227124  
 Britha of Conanga 167

Connealy Consensus  
**Hertha of Conanga 1639** 17063920  
 Herra of Conanga 4462

Connealy Confidence 0100  
 Elbanna of Conanga 1209  
 Connealy Answer 7304  
 Bristy of Conanga 9283  
 KMK Alliance 6595 187  
 Blinda of Conanga 004  
 Connealy Danny 5398  
 Harrah of Conanga 578

CED	BW	WW	YW	SC	MILK	DOC	MARB	REA	\$M	\$W	\$F	\$B	\$C
2	2.1	83	155	1.24	18	30	.67	.73	32	67	125	179	264

Connealy Gary was selected to enhance performance, muscle, docility, scrotal circumference and ribeye in the Sinclair females. We feel he has complimented the Sinclair gene pool very well. The sons are big, stout, heavy muscled bulls that will make a lot of friends sale day. His daughters are among the top of the replacement pen. Use Gary sons to give your herd a "boost" without sacrificing any given traits.



*Kate Looce*

5



**SINCLAIR GARY L002**

REG: \*20837940 | DOB: 02/19/23 | TATTOO: L002

Connealy Niobrara 5451  
**Connealy Gary** 18869442  
 Hertha of Conanga 1639

N Bar Prime Time D806#  
**Sinclair K Bty 9P31 V149#** 16361083  
 N Bar Kinochtry Beauty 4317#

Connealy Confidence Plus#  
 Britha of Conanga 167  
 Connealy Consensus#  
 Herra of Conanga 4462  
 Gardens Prime Time#  
 N Bar Miss Emulous A404  
 Leachman Bold Driver#  
 N Bar Kinochtry Beauty 2414

A herdsire prospect out of the outstanding Donor Cow 9P31, daughter of the Great N Bar Bold Driver bred cow V149 with a 8-112 BR, 8-11 WR, 7-11 YR.

Individual Performance					EPD's				
BW	ADJ. WW	WR	ADJ. YW	YR	CED	BW	WW	MILK	YW
ET	621	100	1077	10	3	0.2	58	25	109
Individual Performance				Mat	\$ Values				
ADG	Act. IMF	REA/100 lbs	SEN	\$M	\$W	\$F	\$G	\$B	
2.42	3.55	1.07	-10	48	52	91	46	137	
<b>Dam's Production</b>					<b>WR: 11 @ 106</b>	<b>YR: 9 @ 107</b>			



Sinclair K Bty 9P31 V149, the 2nd Generation Herdsire Producer and Dam of Lot 5.



N Bar Kinochtry Beauty 4317, the Legendary Maternal Grandam of Lot 5.





### SINCLAIR GARY L332

REG: \*20837811 | DOB: 03/08/23 | TATTOO: L332

Connealy Niobrara 5451  
**Connealy Gary** 18869442  
 Hertha of Conanga 1639

Sinclair Timeless 8BA4#  
**Sinclair Blacky 5TL18 3G18#** 18154068  
 Sinclair Blacky 3G18 6P18

Connealy Confidence Plus#  
 Britha of Conanga 167  
 Connealy Consensus#  
 Herra of Conanga 4462  
 Sinclair IN Time 6BT39  
 Sinclair Blackbird 2P8 7079#  
 Sinclair Grass Master#  
 Sinclair Blacky 6P18 J126

Individual Performance					EPD's				
BW	ADJ. WW	WR	ADJ. YW	YR	CED	BW	WW	MILK	YW
92	677	120	1234	124	4	1.5	72	22	137

Individual Performance				Mat	\$ Values				
ADG	Act. IMF	REA/100 lbs	\$EN	\$M	\$W	\$F	\$G	\$B	
4.68	2.92	1.07	-33	33	56	108	48	156	

**Dam's Production** WR: 7 @ 106 YR: 5 @ 108

Herdsire Prospect, picture does not do this bull justice, you need to see him in person. This bulls comes from a great Timeless - Grassmaster bred Cow that traces back to long time favorite D806.



### SINCLAIR GARY L56

REG: \*20874071 | DOB: 03/03/23 | TATTOO: L56

Connealy Niobrara 5451  
**Connealy Gary** 18869442  
 Hertha of Conanga 1639

Sinclair Timeless 8BA4#  
**Sinclair Lady 3TL46 1X68** 17536586  
 Sinclair Lady 1X68 2P60

Connealy Confidence Plus#  
 Britha of Conanga 167  
 Connealy Consensus#  
 Herra of Conanga 4462  
 Sinclair IN Time 6BT39  
 Sinclair Blackbird 2P8 7079#  
 N Bar Emulation EXT#  
 Sinclair Lady 2P60 4465

Individual Performance					EPD's				
BW	ADJ. WW	WR	ADJ. YW	YR	CED	BW	WW	MILK	YW
89	567	101	1076	108	4	1.4	53	23	104

Individual Performance				Mat	\$ Values				
ADG	Act. IMF	REA/100 lbs	\$EN	\$M	\$W	\$F	\$G	\$B	
3.39	2.57	1.19	-7	59	42	88	42	130	

**Dam's Production** WR: 8 @ 102 YR: 5 @ 98

Big Ribeye from this Gary son. His mother is a Timeless daughter backed by a stellar EXT dam with ratios of 2-107 BR, 0-106 WR, 2-103 YR.



Sinclair Lady 2P60 4465 popular Great Grandam of Lot 7.



*Kate Lisse*

8



## SINCLAIR GARY L287

REG: \*20833590 | DOB: 03/05/23 | TATTOO: L287

Connealy Niobrara 5451  
**Connealy Gary** 18869442  
 Hertha of Conanga 1639

Gardens Transition 7205 S1  
**Sinclair Enchantress 7GT5** 18829778  
 Sinclair Enchantress 2A6

Connealy Confidence Plus#  
 Britha of Conanga 167  
 Connealy Consensus#  
 Herra of Conanga 4462  
 Traveler 1148 G D A R#  
 N Bar Clova Pride 2264  
 Emulation 31#  
 Sinclair Enchantress OFE14

Individual Performance					EPD's				
BW	ADJ. WW	WR	ADJ. YW	YR	CED	BW	WW	MILK	YW
83	649	115	1177	118	4	1.0	64	18	118
Individual Performance					\$ Values				
ADG	Act. IMF	REA/100 lbs	\$EN	\$M	\$W	\$F	\$G	\$B	
3.39	3.78	1.03	-15	55	47	83	45	128	

**Dam's Production** WR: 5 @ 98 YR: 3 @ 101

Gary son that carries thickness throughout. Lot 8 comes from a Gardens Transition daughter out of Emulation 31 bred cow.

*Kate Lisse*



9



## SINCLAIR EMULATION L537

REG: \*20833628 | DOB: 02/11/23 | TATTOO: L537

Emulation N Bar 5522#  
**N Bar Emulation EXT** 10776479#  
 N Bar Primrose 2424

Basin Rainmaker 654X#  
**Sinclair Eriskay 502 2N1**# 18313177  
 Sinclair Eriskay 2N1 7883#

Emulation 31#  
 Ankony 8F78 Lass 8F275  
 Emulation 31#  
 Primrose N Bar 9962  
 Basin Rainmaker D S 380U#  
 Basin Bardolene 423U  
 D H D Traveler 6807#  
 Papa Eriskay 7883

Individual Performance					EPD's				
BW	ADJ. WW	WR	ADJ. YW	YR	CED	BW	WW	MILK	YW
82	633	110	1115	108	6	0.5	43	28	81

Individual Performance				Mat	\$ Values				
ADG	Act. IMF	REA/100 lbs	SEN	\$M	\$W	\$F	\$G	\$B	
4.03	2.35	1.01	-2	47	44	73	18	91	

**Dam's Production WR:** 7 @ 111 **YR:** 7 @ 110

**COW MAKER!** Here is an EXT son out of a great 654X daughter that goes back to the great 2N1 cow. Grandam 8-100 BR, 8-11 WR, 5-108 YR.



Basin Rainmaker 654X, Maternal Grand sire of Lot 9



N Bar Emulation EXT, the Most Influential Bull in the Breed the Past Century and the Sire of Lots 9 & 10.



Sinclair Eriskay 2N1 7883, the Legendary Performance Queen and Grandam of Lot 9.





## SINCLAIR EMULATION L005

REG: \*20833652 | DOB: 02/23/23 | TATTOO: L005

Emulation N Bar 5522#  
**N Bar Emulation EXT** 10776479#  
 N Bar Primrose 2424



Sinclair Timeless 8BA4#  
**Sinclair K Bty 2X7 6MB8#** 17199714  
 Sinclair K Bty 6MB8 B345

Emulation 31#  
 Ankony 8F78 Lass 8F275  
 Emulation 31#  
 Primrose N Bar 9962  
 Sinclair IN Time 6BT39  
 Sinclair Blackbird 2P8 7079#  
 N Bar Musketeer 2M13  
 N Bar Kinochtry Bty B345

HERDSIRE PROSPECT! Here is an exciting EXT son out of the proven great Donor Cow 2X7. 2X7 goes back to a N Bar Prime Rate daughter backed by the great V149 cow. The dam of Lot 10 has raised multiple sale day favorites, including the high selling bull, Sinclair Piney Creek 6FV16. Grandam 5-101 BR,5-110 WR, 3-107 YR.

Individual Performance					EPD's				
BW	ADJ. WW	WR	ADJ. YW	YR	CED	BW	WW	MILK	YW
ET	614	100	1009	100	7	-0.8	37	30	70

Individual Performance				Mat		\$ Values			
ADG	Act. IMF	REA/100 lbs	\$EN	\$M	\$W	\$F	\$G	\$B	
3.55	3.59	1.11	5	46	45	80	29	109	

Dam's Production WR: 9 @ 107 YR: 6 @ 108



Sinclair Piney Creek 6FV16



Sinclair X-Plus 9XX3



Sinclair K Bty 2X7 6MB8, the Dam of Lot 10.

Maternal brothers to Lot 10.



## SINCLAIR JUSTIFIED L511

REG: \*20872260 | DOB: 02/07/23 | TATTOO: L511

Connealy Judgment  
**KG Justified 3023** 17707279#  
 KG Miss Magic 1443

Vermilion Spur G3269  
**Sinclair Ms Emulous J194** 20213411  
 Sinclair Ms Emulous 8FA1 OR2

Connealy Consensus 7229#  
 Entrine of Conanga 9876#  
 Sitz Wisdom 481T#  
 KG Miss Magic 3528  
 Connealy Spur#  
 Vermilion Queen 5047  
 Sinclair Emulation 6FX2  
 Sinclair Ms Emulous OR2 G470#

Individual Performance					EPD's				
BW	ADJ. WW	WR	ADJ. YW	YR	CED	BW	WW	MILK	YW
70	600	103	1054	103	10	-0.7	58	26	98
Individual Performance				Mat	\$ Values				
ADG	Act. IMF	REA/100 lbs	\$EN	\$M	\$W	\$F	\$G	\$B	\$C
3.39	3.05	1.14	1	95	57	66	48	115	

**Dam's Production WR:** 1 @ 103 **YR:** 1 @ 103

Thick topped Justified son out of an up and coming Spur daughter which traces back to Revolve OR5.



## REF SIRE **KG JUSTIFIED 3023#**

REG: 17707279 | DOB: 1/21/2013 | TATTOO: 3023

KG Miss Magic 1443#  
**Connealy Judgment** 17031468  
 Entrine of Conanga 9876#

Sitz Wisdom 481T#  
**KG Miss Magic 1443** 17127788  
 KG Miss Magic 3528

Connealy Consensus#  
 Blue Lilly of Conanga 16  
 Rito 6EMA of 4L3 Emblazon#  
 Entrance of Conanga 206#  
 Connealy Onward#  
 Sitz Elluna Elite 94P  
 KG Traveler 8180 8171  
 KG Miss Magic 6560

CED	BW	WW	YW	SC	MILK	DOC	MARB	REA	\$M	\$W	\$F	\$B	\$C
12	-1.9	62	109	1.74	30	22	1.11	.24	96	82	76	143	281

After seeing Justified at stud, we felt he would really enhance our program from a phenotype and consistency standpoint. They maintain light birth weight and well above average growth and carcass traits. He is a \$M leader and offers added milk as well. They are a good-footed, do-it-all kind of bulls. His first daughters in production at Sinclair are brood cows deluxe!



**12 SINCLAIR JUSTIFIED L515**  
REG: \*20872261 | DOB: 02/08/23 | TATTOO: L515

**15 SINCLAIR JUSTIFIED L358**  
REG: \*20870998 | DOB: 03/10/23 | TATTOO: L358

Connealy Judgment  
**KG Justified 3023** 17707279#  
KG Miss Magic 1443

Connealy Spur#  
**Sinclair Lady J371** 20126908  
Sinclair Lady 4FC2 2TL28#

Connealy Consensus 7229#  
Entrine of Conanga 9876#  
Sitz Wisdom 481T#  
KG Miss Magic 3528

Connealy Stimulus 8419#  
Jazza of Conanga 8594#  
N Bar Emulation 5522 4245A  
Sinclair Lady 2TL28 9JP22

KG Justified 3023#  
**Sinclair Justified J574** 20256119  
Sinclair Primrose 9L4 7FT12

Sinclair Timeless 8BA4#  
**Sinclair Lady Ida 7TL5 5XO17** 18807064  
Sinclair Lady Ida 5XO17 1XX5

Connealy Judgment  
KG Miss Magic 1443  
Sinclair Plains Boss 5BO2  
Sinclair Primrose 7FT12

Sinclair IN Time 6BT39  
Sinclair Blackbird 2P8 7079#  
Sinclair Emperor 0XT51  
Sinclair Lady Ida 1XX5 7V19

Individual Performance					EPD's				
BW	ADJ. WW	WR	ADJ. YW	YR	CED	BW	WW	MILK	YW
70	597	102	1087	106	10	-1.2	56	30	101
Individual Performance					EPD's				
ADG	Act. IMF	REA/100 lbs	\$EN	\$M	\$W	\$F	\$G	\$B	
3.87	3.68	1.00	-8	78	57	70	49	119	

Individual Performance					EPD's				
BW	ADJ. WW	WR	ADJ. YW	YR	CED	BW	WW	MILK	YW
86	585	104	1087	110	7	-0.4	41	29	85
Individual Performance					EPD's				
ADG	Act. IMF	REA/100 lbs	\$EN	\$M	\$W	\$F	\$G	\$B	
4.68	3.11	0.96	0	78	40	69	43	111	

**Dam's Production** WR: 1 @ 102 YR: 1 @ 106  
Good Justified, Spur combination traces back to 5522 and a solid Timeless daughter 8-101 BR, 8-107 WR, 6-102 YR.

**Dam's Production** WR: 5 @ 108 YR: 3 @ 107  
Heifer Bull. A J574 son tracing back to the great 7V19 cow.

**13 SINCLAIR JUSTIFIED L526**  
REG: \*20872263 | DOB: 02/09/23 | TATTOO: L526



Connealy Judgment  
**KG Justified 3023** 17707279#  
KG Miss Magic 1443

Sinclair Exquisite 6X4  
**Sinclair C Pride J185 9PU4** 20253782  
Sinclair C Pride 9PU4 7X34

Connealy Consensus 7229#  
Entrine of Conanga 9876#  
Sitz Wisdom 481T#  
KG Miss Magic 3528

N Bar Emulation EXT#  
Sinclair M Emulous 4ET1 D47#  
Sinclair MT Time 2P77  
Sinclair C Pride 7X34 K325#

**16 SINCLAIR JUSTIFIED L379**  
REG: \*20870996 | DOB: 03/12/23 | TATTOO: L379

Individual Performance					EPD's				
BW	ADJ. WW	WR	ADJ. YW	YR	CED	BW	WW	MILK	YW
74	588	101	1047	103	10	-1.0	48	30	87
Individual Performance					EPD's				
ADG	Act. IMF	REA/100 lbs	\$EN	\$M	\$W	\$F	\$G	\$B	
3.55	4.09	1.21	1	71	51	70	57	127	

KG Justified 3023#  
**Sinclair Justified J574** 20256119  
Sinclair Primrose 9L4 7FT12

Ideal 4458 of 6807 5103  
**Sinclair K Bty 8R9J 1P16** 19166623  
Sinclair K Bty 1P16 E118

Connealy Judgment  
KG Miss Magic 1443  
Sinclair Plains Boss 5BO2  
Sinclair Primrose 7FT12

D H D Traveler 6807#  
Eldorado 5103 Ideal 3167 156  
N Bar Prime Time D806#  
N Bar Kinochtry Beauty Z1925

**Dam's Production** WR: 1 @ 101 YR: 1 @ 103  
Good Ribeye. Justified son out of a Linebred Mt Time EXT Granddaughter 10-95 BR, 10-106 WR, 8-105 YR.

Individual Performance					EPD's				
BW	ADJ. WW	WR	ADJ. YW	YR	CED	BW	WW	MILK	YW
82	579	103	1088	110	8	0.1	42	27	88
Individual Performance					EPD's				
ADG	Act. IMF	REA/100 lbs	\$EN	\$M	\$W	\$F	\$G	\$B	
3.55	4.44	0.99	-2	78	38	72	52	125	

**14 SINCLAIR JUSTIFIED L355**  
REG: \*20870993 | DOB: 03/10/23 | TATTOO: L355

KG Justified 3023#  
**Sinclair Justified J574** 20256119  
Sinclair Primrose 9L4 7FT12

V D A R Rito 953#  
**Sinclair Ms Emulous 8VR5#** 19250092  
Sinclair Ms Emulous 5PV72

Connealy Judgment  
KG Miss Magic 1443  
Sinclair Plains Boss 5BO2  
Sinclair Primrose 7FT12

Rito 2100 G D A R#  
Miss Wix 903 of Mc Cumber  
Sinclair Net Present Value#  
N Bar Miss Emulous A404

Individual Performance					EPD's				
BW	ADJ. WW	WR	ADJ. YW	YR	CED	BW	WW	MILK	YW
86	623	110	1085	109	5	0.5	43	29	83
Individual Performance					EPD's				
ADG	Act. IMF	REA/100 lbs	\$EN	\$M	\$W	\$F	\$G	\$B	
4.68	3.42	1.08	-1	78	43	53	46	99	

**Dam's Production** WR: 4 @ 107 YR: 2 @ 103  
Justified Grandson by J574. J574 was purchased by Scott Peterson in our 2022 Sale

**Dam's Production** WR: 4 @ 104 YR: 4 @ 106  
Calving Ease. A J574 son tracing back to 6807, D806 bred cow with 8-94 bR, 8-101 WR, 4-103 YR.



## SINCLAIR KEEN L297

REG: \*20872798 | DOB: 03/06/23 | TATTOO: L297

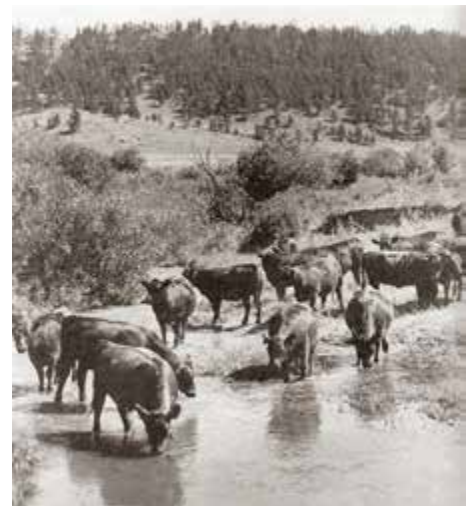
Coleman Doc 2261  
**Coleman Keen 717** 18928879  
 Coleman Eriskay 308

Sinclair Plains Boss 5BO2  
**Sinclair B Maid 8L8 3A24** 19169669  
 Sinclair B Maid 3A24 1PD6

Wulffs Ext 6106#  
 Coleman Donna 989  
 Coleman Charlo 0256#  
 Sinclair Eriskay 2N1 7883#  
 Sinclair Patriarch 3B47  
 Sinclair Lady Ida 7V19 04F3  
 Emulation 31#  
 Sinclair B Maid 1PD6 7RL16

Individual Performance					EPD's				
BW	ADJ. WW	WR	ADJ. YW	YR	CED	BW	WW	MILK	YW
85	625	111	1135	114	4	1.0	60	20	101
Individual Performance				Mat	\$ Values				
ADG	Act. IMF	REA/100 lbs	\$EN	\$M	\$W	\$F	\$G	\$B	
3.39	2.47	1.05	6	64	51	67	21	88	
<b>Dam's Production</b>					WR: 4 @ 107	YR: 1 @ 114			

Female Producing Keen son, with 2N1, Plains Boss, 7V19 and Emulation 31 in the pedigree, Grandam 8-93 BR, 7-103 WR, 5-100 YR.



## REF SIRE

## COLEMAN KEEN

REG: 18928879 | DOB: 1/15/17 | TATTOO: 717

Wulffs Ext 6106 #  
**Coleman Doc 2261** 17544680  
 Coleman Donna 989

Coleman Charlo 0256 #  
**Coleman Eriskay 308** 17603472  
 Sinclair Eriskay 2N1 7883 #

N Bar Emulation EXT #  
 Wulffs Erica Dianna C116  
 R R Rito 707 #  
 Coleman Donna 386  
 O C C Paxton 730P #  
 Bohi Abigale 6014  
 D H D Traveler 6807 #  
 Papa Eriskay 7883

CED	BW	WW	YW	SC	MILK	DOC	MARB	REA	\$M	\$W	\$F	\$B	\$C
6	1.0	62	97	.97	18	14	-.17	.30	73	60	64	70	164

Keen, a standout bull, combines ideal size and muscle for low-input systems. His pedigree includes notable names like EXT and Rito 707, making him a key sire for improving herd quality. His offspring are expected to advance the herd's excellence further. Bred and raised at Coleman Angus, who is celebrated for its top-quality maternal herd, focusing on cattle with exceptional performance and maternal traits.





18



**18 SINCLAIR KEEN L5**

REG: \*20872816 | DOB: 02/16/23 | TATTOO: L5

Coleman Doc 2261  
**Coleman Keen 717** 18928879  
 Coleman Eriskay 308

Sinclair Rito 9R7  
**Sinclair C Pride 7RV1 8S20** 18829730  
 Sinclair C Pride 8S20 5P97

Wulffs Ext 6106#  
 Coleman Donna 989  
 Coleman Charlo 0256#  
 Sinclair Eriskay 2N1 7883#  
 Rito Revolve OR5  
 Sinclair K BTY 6PV5 25F3  
 N Bar Shadow X4124  
 Sinclair C Pride 5P97 3G32

Individual Performance						EPD's				
BW	ADJ. WW	WR	ADJ. YW	YR	CED	BW	WW	MILK	YW	
90	670	119	1176	118	6	0.9	68	16	109	
Individual Performance						\$ Values				
ADG	Act. IMF	REA/100 lbs	SEN	\$M	\$W	\$F	\$G	\$B		
3.55	2.74	1.07	-2	72	55	62	13	76		
<b>Dam's Production WR: 4 @ 107 YR: 3 @ 106</b>										

Good Ribeye Keen son tracing back to N Bar Shadow , and the Great N Bar X412 cow.



**19 SINCLAIR KEEN L347**

REG: \*20872808 | DOB: 03/09/23 | TATTOO: L347

Coleman Doc 2261  
**Coleman Keen 717** 18928879  
 Coleman Eriskay 308

Sinclair Cloud Peak 5O4  
**Sinclair Primrose 7ON3 3FX71** 18826313  
 Sinclair Primrose 3FX71

Wulffs Ext 6106#  
 Coleman Donna 989  
 Coleman Charlo 0256#  
 Sinclair Eriskay 2N1 7883#  
 Basin Rainmaker 654X#  
 Sinclair Eriskay 2N1 7883#  
 Sinclair Emulation 0F4  
 Sinclair Primrose 1UX15#

Individual Performance						EPD's				
BW	ADJ. WW	WR	ADJ. YW	YR	CED	BW	WW	MILK	YW	
95	615	109	1010	102	4	1.4	51	21	83	
Individual Performance						\$ Values				
ADG	Act. IMF	REA/100 lbs	SEN	\$M	\$W	\$F	\$G	\$B		
1.61	2.58	1.05	15	79	46	47	16	64		
<b>Dam's Production WR: 5 @ 104 YR: 2 @ 103</b>										

Double bred to the great cow 2N1 with Rainmaker 654X, backed to the great female producer EXT V722 and Transition.







**20 SINCLAIR KEEN L617**  
 REG: \*20841877 | DOB: 02/19/23 | TATTOO: L617

Coleman Doc 2261  
**Coleman Keen 717** 18928879  
 Coleman Eriskay 308

Wulffs Ext 6106#  
 Coleman Donna 989  
 Coleman Charlo 0256#  
 Sinclair Eriskay 2N1 7883#

N Bar Emulation EXT#  
**Sinclair Enchantress 8X8** 20598527  
 N Bar Enchantress WP F3619

Emulation N Bar 5522#  
 N Bar Primrose 2424  
 N Bar Shadow X4124  
 N Bar Enchantress A1376

Individual Performance					EPD's				
BW	ADJ. WW	WR	ADJ. YW	YR	CED	BW	WW	MILK	YW
80	555	97	998	97	6	0.1	46	21	72
Individual Performance					\$ Values				
ADG	Act. IMF	REA/100 lbs	\$EN	\$M	\$W	\$F	\$G	\$B	
4.35	2.62	1.05	19	67	45	46	10	56	

**Dam's Production WR:** 1 @ 97 **YR:** 1 @ 97

Nice Keen son out of a linebred EXT cow that also traces back to the Great X412 cow.



Sinclair Eclipse 9X17, the Sire of Lot 21

**21 SINCLAIR ECLIPSE L512**  
 REG: \*20833648 | DOB: 02/08/23 | TATTOO: L512

N Bar Emulation EXT#  
**Sinclair Eclipse 9X17** 19602966  
 N Bar Enchantress WP F3619

Emulation N Bar 5522#  
 N Bar Primrose 2424  
 N Bar Shadow X4124  
 N Bar Enchantress A1376

Sinclair Exquisite 9X6  
**Sinclair Nalie J32** 20263139  
 Sinclair Nalie 9JP4 7F1#

N Bar Emulation EXT#  
 Sinclair K Bty 9P31 V149#  
 Dunlouse Jipsey Earl E161#  
 Sinclair Nalie 7F1 D17

Individual Performance					EPD's				
BW	ADJ. WW	WR	ADJ. YW	YR	CED	BW	WW	MILK	YW
74	644	114	1054	109	7	-0.9	42	29	64
Individual Performance					\$ Values				
ADG	Act. IMF	REA/100 lbs	\$EN	\$M	\$W	\$F	\$G	\$B	
3.39	3.54	1.09	9	62	51	46	24	70	

**Dam's Production WR:** 1 @ 114 **YR:** 1 @ 109

Calving ease Eclipse linebred female producer, with the great 9P31 cow and productive 9JP4 Grandam 12-101 BR, 13-108 WR, 8-102 YR.

**1986:**

N Bar Emulation EXT is born, coming from a lineage that would become renowned for its impact on the Angus breed. His sire, Emulation N Bar 5522, and his dam, N Bar Primrose 2424, contributed to his exceptional genetic makeup.

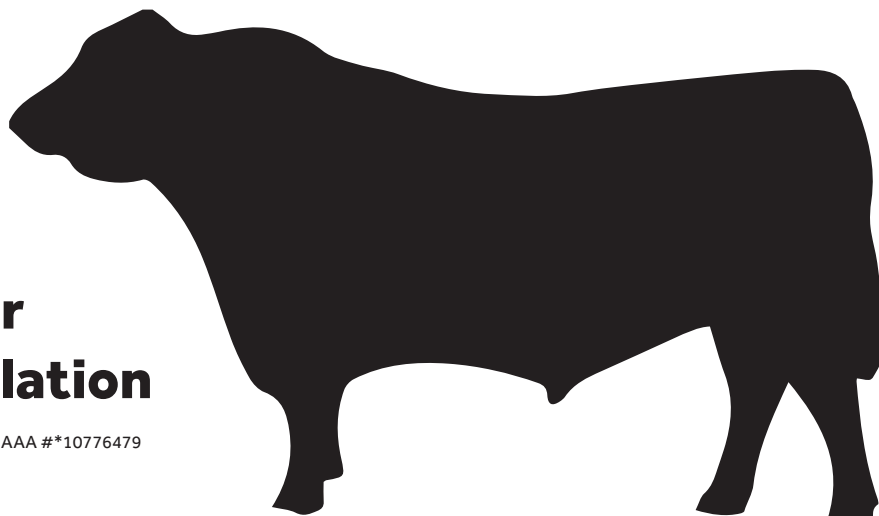
**Late 1980s to Early 1990s:**

EXT begins his breeding career at the N Bar Ranch in Montana. His genetic traits quickly become sought after for their positive impact on carcass quality, maternal characteristics, growth rates, and overall conformation.

**1990s:**

EXT's progeny start to make a significant impact on the Angus breed, with his sons and daughters showcasing the desirable traits he was known for. His influence spreads as his genetics are used widely across the United States and internationally.

**N Bar Emulation EXT** AAA #\*10776479



**2000s:**

The legacy of EXT solidifies as his offspring continue to perform exceptionally well, both in purebred Angus operations and in commercial beef production. His impact on improving carcass quality, efficiency, and maternal traits is widely recognized.

**2010s and Beyond:**

Even after his passing, EXT's genetics continue to play a crucial role in Angus breeding programs around the world. His influence is seen in the continued demand for his lineage, with many modern Angus cattle tracing their genetics back to him.

*Staying true to the Legacy*

N Bar Emulation EXT's contributions to carcass quality, maternal abilities, and breed improvement have left a lasting legacy, influencing breeding decisions and industry standards long after his time.



**22 SINCLAIR EMULATION L292**  
 REG: \*20872795 | DOB: 03/05/23 | TATTOO: L292

N Bar Emulation EXT#  
**Sinclair Emulation XXP** 15355048#  
 N Bar Primrose Y3051#

Sinclair Sun Dial 4TL2  
**Sinclair Ms Emulous 6TT18** 18506535  
 Sinclair Ms Emulous 4XT11

Emulation N Bar 5522#  
 N Bar Primrose 2424  
 N Bar Emulation EXT#  
 N Bar Primrose 2429#  
 Sinclair Timeless 8BA4#  
 Sinclair K Bty 2X7 6MB8#  
 Sinclair Extra 4X13#  
 Sinclair Ms Emulous 2FE42

Individual Performance					EPD's				
BW	ADJ. WW	WR	ADJ. YW	YR	CED	BW	WW	MILK	YW
75	586	104	1087	109	10	-2.3	45	24	85
Individual Performance				Mat	\$ Values				
ADG	Act. IMF	REA/100 lbs	\$EN	\$M	\$W	\$F	\$G	\$B	\$B
3.87	3.58	1.14	-5	43	46	71	39	110	

**Dam's Production WR: 6 @ 102 YR: 5 @ 102**

Calving Ease. XXP son with the great donor cow 2X7, and female producer 4X13 bull in pedigree.

**23 SINCLAIR X-PLUS L313**  
 REG: \*20833592 | DOB: 03/07/23 | TATTOO: L313

N Bar Emulation EXT#  
**Sinclair Emulation XXP** 15355048#  
 N Bar Primrose Y3051#

Sinclair Emperor OXT1  
**Sinclair Erica 4IJ1 8BT12#** 17746186  
 Sinclair Erica 8BT12 A18

Emulation N Bar 5522#  
 N Bar Primrose 2424  
 N Bar Emulation EXT#  
 N Bar Primrose 2429#  
 Sinclair Extra 4X13#  
 Sinclair Ruth 8A1 A78  
 BT Right Time 24J#  
 Rito Majesty 4A18 of F0203

Individual Performance					EPD's				
BW	ADJ. WW	WR	ADJ. YW	YR	CED	BW	WW	MILK	YW
92	627	111	1077	108	2	1.7	50	24	90
Individual Performance				Mat	\$ Values				
ADG	Act. IMF	REA/100 lbs	\$EN	\$M	\$W	\$F	\$G	\$B	\$B
3.23	2.75	1.15	-6	48	44	78	32	110	

**Dam's Production WR: 8 @ 108 YR: 6 @ 103**

Good Ribeye. XXP son out of a powerful BT Right Time 24J Granddaughter boasting ratios of 4-109 BR, 4-111 WR, 3-113 YR.

**REF SIRE SINCLAIR EMULATION XXP#**  
 REG: +15355048 | DOB: 03/03/06 | TATTOO: 6X44

Emulation N Bar 5522#  
**N Bar Emulation EXT** 10776479#  
 N Bar Primrose 2424

N Bar Emulation EXT#  
**N Bar Primrose Y3051#** 11553390  
 N Bar Primrose 2429#

Emulation 31#  
 Ankony 8F78 Lass 8F275  
 Emulation 31#  
 Primrose N Bar 9962  
 Emulation N Bar 5522#  
 N Bar Primrose 2424  
 Nichols Trademark S1#  
 Primrose N Bar 9962

CED	BW	WW	YW	SC	MILK	DOC	MARB	REA	\$M	\$W	\$F	\$B	\$C
-1	1.5	56	106	-.01	20	22	.66	.04	31	47	94	138	210

Are you looking for long bodied cattle with maternal goodness paired with proven docility? Sinclair Emulation XXP can help you! XXP consistently sires progeny that are easy to get along with and have added pay-weight from length of body. Daughters are the keeping kind backed by proven maternal genetics. XXP has seen use by breeders all over the country with success.





N Bar Miss Emulous A404, "D80", the Foundation Sinclair Miss Emulous Donor and the Grandam of Lot 24.

**24 SINCLAIR X-PLUS L101**  
 REG: \*20833571 | DOB: 03/09/23 | TATTOO: L101

N Bar Emulation EXT#  
**Sinclair Emulation XXP** 15355048#  
 N Bar Primrose Y3051#

Sinclair Rito Legacy 3R9  
**Sinclair Ms Emulous 2RL5 D80#** 17253579  
 N Bar Miss Emulous A404

Emulation N Bar 5522#  
 N Bar Primrose 2424  
 N Bar Emulation EXT#  
 N Bar Primrose 2429#  
 R R Rito 707#  
 Ideal 4465 of 6807 4286  
 N Bar Emulation Ext Z52  
 N Bar Miss Emulous X3091#

Individual Performance					EPD's				
BW	ADJ. WW	WR	ADJ. YW	YR	CED	BW	WW	MILK	YW
95	637	113	1186	119	1	2.1	49	23	94

Individual Performance				Mat	\$ Values				
ADG	Act. IMF	REA/100 lbs	SEN	\$M	\$W	\$F	\$G	\$B	
4.84	3.25	1.02	-9	39	38	75	35	110	

**Dam's Production** WR: 10 @ 105 YR: 8 @ 104

Long, thick, good fronted, deep bodied bull with the great Donor cow D80 as Grandmother 5-93 BR, 5-102 WR, 4-105 YR.

**25 SINCLAIR X-PLUS L321**  
 REG: \*20833619 | DOB: 03/08/23 | TATTOO: L321

N Bar Emulation EXT#  
**Sinclair Emulation XXP** 15355048#  
 N Bar Primrose Y3051#

Sinclair X-Changer 2FE9  
**Sinclair K Bty 4FV2 1TX4** 17830565  
 Sinclair K Bty 1TX4 8PV43

Emulation N Bar 5522#  
 N Bar Primrose 2424  
 N Bar Emulation EXT#  
 N Bar Primrose 2429#  
 Sinclair Emulation 5522 XP#  
 Sinclair Blackie 7V3 2P18  
 Sinclair XX 8X28  
 Sinclair K Bty 8PV43 6FA5#

Individual Performance					EPD's				
BW	ADJ. WW	WR	ADJ. YW	YR	CED	BW	WW	MILK	YW
88	575	102	1021	103	3	1.0	53	18	96

Individual Performance				Mat	\$ Values				
ADG	Act. IMF	REA/100 lbs	SEN	\$M	\$W	\$F	\$G	\$B	
3.39	3.41	1.04	-5	41	41	70	35	105	

**Dam's Production** WR: 6 @ 101 YR: 5 @ 106

XXP son that comes from a strong cow family. Grandam 2-98 BR, 2-109 WR, 1-102 YR.



Sinclair Emulation 5522 XP, the Highly Maternal Grand sire of Lot 25.



**REF SIRE SINCLAIR TIMELESS 8BA4#**  
 REG: 16027579 | DOB: 02/10/08 | TATTOO: 8BA4

BT Right Time 24J#  
**Sinclair In Time 6BT39** 15366581  
 N Bar Miss Emulous A404

N Bar Prime Time D806#  
**Sinclair Blackbird 2P8 7079#** 14339897  
 Rito 707 of Ideal 089 7076

Leachman Right Time#  
 Sitz Everelda Entense 1905  
 N Bar Emulation Ext Z52  
 N Bar Miss Emulous X3091#  
 Gardens Prime Time#  
 N Bar Miss Emulous A404  
 R R Rito 707#  
 Ideal 089 of 8103 7394

CED	BW	WW	YW	SC	MILK	DOC	MARB	REA	\$M	\$W	\$F	\$B	\$C
15	-4.7	22	57	.20	33	8	.42	-.05	41	34	74	102	173

Timeless is a rock solid, "go to" highly proven heifer bull who is a universal breeding tool. He makes exceptional females that work for a living in range environments. This Pathfinder sire's daughters have a productive avg. nursing ratio at a 102.



**27 SINCLAIR TIMELESS L623**  
 REG: \*20833639 | DOB: 02/20/23 | TATTOO: L623

Sinclair IN Time 6BT39  
**Sinclair Timeless 8BA4** 16027579#  
 Sinclair Blackbird 2P8 7079#

Connealy Spur#  
**Sinclair Lady J536 7V7** 20281590  
 Sinclair Lady 7V7 3T7

BT Right Time 24J#  
 N Bar Miss Emulous A404  
 N Bar Prime Time D806#  
 Rito 707 of Ideal 089 7076  
 Connealy Stimulus 8419#  
 Jazza of Conanga 8594#  
 N Bar Emulation Ext A1747  
 Sinclair Lady 3T7 4465

Individual Performance						EPD's			
BW	ADJ. WW	WR	ADJ. YW	YR	CED	BW	WW	MILK	YW
72	681	121	1107	115	8	-0.9	54	30	99
Individual Performance				Mat		\$ Values			
ADG	Act. IMF	REA/100 lbs	SEN	\$M	\$W	\$F	\$G	\$B	
3.06	3.04	1.16	-11	64	55	78	34	113	

**Dam's Production WR:** 1 @ 121 **YR:** 1 @ 115

Heifer bull with great spread in EPD's tracing back to the foundation Donor 4465.



**26 SINCLAIR TIMELESS L382**  
 REG: \*20833600 | DOB: 03/13/23 | TATTOO: L382

Sinclair IN Time 6BT39  
**Sinclair Timeless 8BA4** 16027579#  
 Sinclair Blackbird 2P8 7079#

Sinclair Exquisite 6X2  
**Sinclair C Pride 8XA16 5FE13** 19284027  
 Sinclair C Pride 5FE13 2P10

BT Right Time 24J#  
 N Bar Miss Emulous A404  
 N Bar Prime Time D806#  
 Rito 707 of Ideal 089 7076  
 N Bar Emulation EXT#  
 Sinclair Ms Emulous 7RT5  
 Sinclair Emulation 5522 XP#  
 Sinclair C Pride 2P10 J355

Individual Performance						EPD's			
BW	ADJ. WW	WR	ADJ. YW	YR	CED	BW	WW	MILK	YW
78	619	110	1125	113	11	-2.5	35	29	69
Individual Performance				Mat		\$ Values			
ADG	Act. IMF	REA/100 lbs	SEN	\$M	\$W	\$F	\$G	\$B	
4.19	2.47	0.96	6	60	41	64	26	90	

**Dam's Production WR:** 3 @ 106 **YR:** 2 @ 108

Calving Ease Timeless son tracing back to Donor D80 both sides in the pedigree.

**28 SINCLAIR TIMELESS L331**  
 REG: \*20833594 | DOB: 03/08/23 | TATTOO: L331

Sinclair IN Time 6BT39  
**Sinclair Timeless 8BA4** 16027579#  
 Sinclair Blackbird 2P8 7079#

Sinclair Emulation XXP#  
**Sinclair K Bty 4XX33 7BT20** 17821754  
 Sinclair K BTY 7BT20 11P3#

BT Right Time 24J#  
 N Bar Miss Emulous A404  
 N Bar Prime Time D806#  
 Rito 707 of Ideal 089 7076  
 N Bar Emulation EXT#  
 N Bar Primrose Y3051#  
 BT Right Time 24J#  
 Sinclair K Bty 11P3 L234

Individual Performance						EPD's			
BW	ADJ. WW	WR	ADJ. YW	YR	CED	BW	WW	MILK	YW
93	565	100	1005	101	5	0.0	40	26	84
Individual Performance				Mat		\$ Values			
ADG	Act. IMF	REA/100 lbs	SEN	\$M	\$W	\$F	\$G	\$B	
4.19	2.94	1.09	3	59	36	76	31	107	

**Dam's Production WR:** 8 @ 98 **YR:** 5 @ 103

Timeless, XXP son out of BT Right Time 24J cow. Grandam 13-93 BR, 13-104, WR, 8-103 YR.

**29 SINCLAIR TIMELESS L378**  
 REG: \*20872813 | DOB: 03/12/23 | TATTOO: L378

Sinclair IN Time 6BT39  
**Sinclair Timeless 8BA4** 16027579#  
 Sinclair Blackbird 2P8 7079#

Sinclair Executive 9XV2  
**Sinclair Pride 9U2 5DY1** 19475390  
 Sinclair Pride 5DY1 2188

BT Right Time 24J#  
 N Bar Miss Emulous A404  
 N Bar Prime Time D806#  
 Rito 707 of Ideal 089 7076  
 N Bar Emulation Ext V722  
 N Bar Primrose Y3051#  
 Ankonian Dynamo#  
 Sitz Pride 2188

Individual Performance						EPD's			
BW	ADJ. WW	WR	ADJ. YW	YR	CED	BW	WW	MILK	YW
90	560	99	1053	106	6	-0.2	37	25	79
Individual Performance				Mat		\$ Values			
ADG	Act. IMF	REA/100 lbs	SEN	\$M	\$W	\$F	\$G	\$B	
2.90	3.05	1.03	3	54	33	64	27	92	

**Dam's Production WR:** 3 @ 101 **YR:** 3 @ 107

Productive Cow family. Grandam 6-103 BR, 6-101, WR, 2-106 YR.



**REF SIRE** **SINCLAIR EXQUISITE 0X3**  
 REG: +19941920 | DOB: 02/02/20 | TATTOO: 0X3

Emulation N Bar 5522#  
**N Bar Emulation EXT** 10776479#  
 N Bar Primrose 2424

Basin Rainmaker 654X#  
**Basin Pamella F271** 12932233  
 Basin Pamella 676X#

Emulation 31#  
 Ankony 8F78 Lass 8F275  
 Emulation 31#  
 Primrose N Bar 9962  
 Basin Rainmaker D S 380U#  
 Basin Bardolene 423U  
 Basin Rainmaker D S 450U  
 Basin Pamella 6806

CEW	BW	WW	YW	SC	MILK	DOC	MARB	REA	\$M	\$W	\$F	\$B	\$C
-3	3.2	44	84	-.56	30	-2	.35	.33	48	39	78	111	192

0X3 was retained by Sinclair as a featured herdsire that adds tremendous length and performance and some extra size for those selling calves by the pound. His impeccable maternal pedigree is rock solid.

**30 SINCLAIR EXQUISITE L274**  
 REG: \*20872790 | DOB: 03/03/23 | TATTOO: L274

N Bar Emulation EXT#  
**Sinclair Exquisite 0X3** 19941920  
 Basin Pamella F271

Sinclair Broker 3RC33  
**Sinclair Ms Emulous 6K1 2P7** 18487748  
 Sinclair Ms Emulous 2P7 D47

Emulation N Bar 5522#  
 N Bar Primrose 2424  
 Basin Rainmaker 654X#  
 Basin Pamella 676X#  
 Sinclair Entrepreneur 8R101  
 Sinclair Lady Ida 8XV12 C52#  
 N Bar Prime Time D806#  
 N Bar Miss Emulous B514

Individual Performance					EPD's				
BW	ADJ. WW	WR	ADJ. YW	YR	CEW	BW	WW	MILK	YW
80	613	109	1181	119	6	-0.4	48	28	96
Individual Performance					\$ Values				
ADG	Act. IMF	REA/100 lbs	\$EN	\$M	\$W	\$F	\$G	\$B	\$C
3.39	4.17	1.15	-11	56	45	79	47	125	

**Dam's Production** WR: 6 @ 104 YR: 4 @ 106

High Marbling 0X3 son. His Paternal Grandmother is Donor 8XV12.



N Bar Miss Emulous B514, the Sinclair Foundation Miss Emulous Donor and the Great Grandam of Lot 30.

**31 SINCLAIR EXQUISITE L342**  
 REG: \*20872805 | DOB: 03/09/23 | TATTOO: L342

N Bar Emulation EXT#  
**Sinclair Exquisite 0X3** 19941920  
 Basin Pamella F271

Sinclair Cloud Peak 504  
**Sinclair Enchantress 90N1** 19475120  
 Sinclair Enchantress 5CR7

Emulation N Bar 5522#  
 N Bar Primrose 2424  
 Basin Rainmaker 654X#  
 Basin Pamella 676X#  
 Basin Rainmaker 654X#  
 Sinclair Eriskay 2N1 7883#  
 Cole Creek Cedar Ridge 1V#  
 Sinclair Enchantress 3X10

Individual Performance					EPD's				
BW	ADJ. WW	WR	ADJ. YW	YR	CEW	BW	WW	MILK	YW
85	598	106	1001	101	5	0.1	42	28	74
Individual Performance					\$ Values				
ADG	Act. IMF	REA/100 lbs	\$EN	\$M	\$W	\$F	\$G	\$B	\$C
2.10	2.62	1.28	6	71	45	58	28	85	

**Dam's Production** WR: 2 @ 100 YR: 2 @ 101

Linebred Rainmaker 654X. Grandam 5-106 BR, 4-113 WR, 2-104 YR.

**32 SINCLAIR EXQUISITE L30**  
 REG: \*20872800 | DOB: 02/26/23 | TATTOO: L30

N Bar Emulation EXT#  
**Sinclair Exquisite 0X3** 19941920  
 Basin Pamella F271

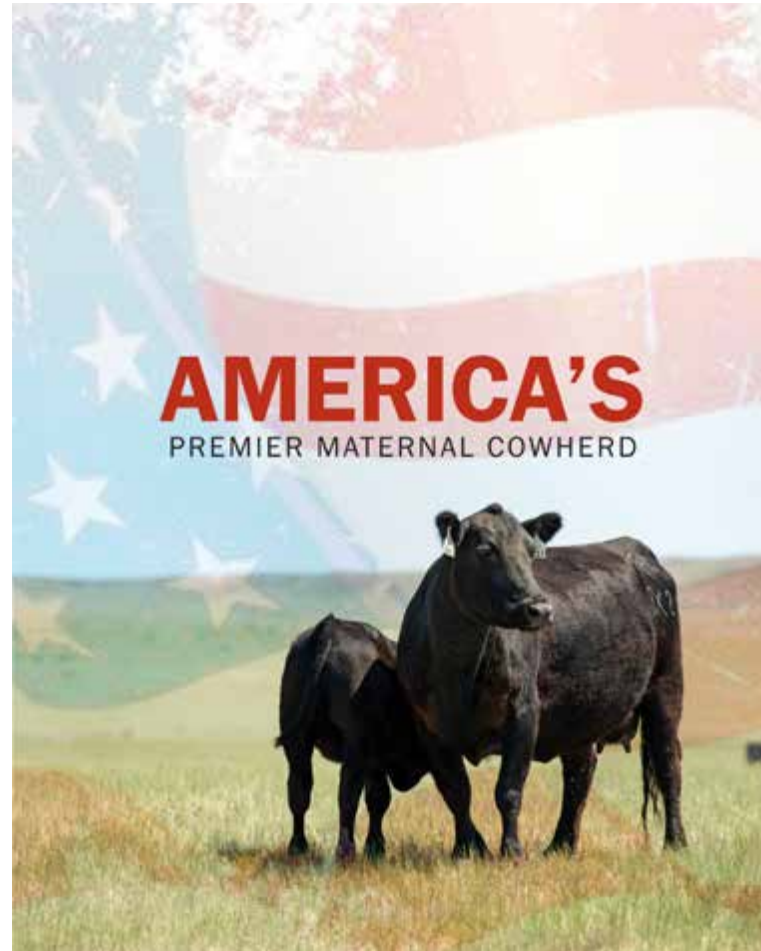
Sinclair Emperor 0XT1  
**Sinclair Primrose 3IJ3 ORS12#** 17506456  
 Sinclair Primrose ORS12 6X40

Emulation N Bar 5522#  
 N Bar Primrose 2424  
 Basin Rainmaker 654X#  
 Basin Pamella 676X#  
 Sinclair Extra 4X13#  
 Sinclair Ruth 8A1 A78  
 Sinclair Standard Bearer  
 Sinclair Primrose 6X40 A14

Individual Performance					EPD's				
BW	ADJ. WW	WR	ADJ. YW	YR	CEW	BW	WW	MILK	YW
91	579	103	1019	103	4	1.1	41	27	77
Individual Performance					\$ Values				
ADG	Act. IMF	REA/100 lbs	\$EN	\$M	\$W	\$F	\$G	\$B	\$C
2.26	3.38	1.19	6	63	40	60	30	90	

**Dam's Production** WR: 9 @ 106 YR: 7 @ 107

Lot 32 comes from a good productive cow.





### SINCLAIR EXQUISITE L316

REG: \*20872801 | DOB: 03/07/23 | TATTOO: L316

N Bar Emulation EXT#  
**Sinclair Exquisite 0X2** 19919831  
 Sinclair Lady 3M18 4465#

Sinclair Preview 2TL6  
**Sinclair Primrose 5TA26 2G11** 18154273  
 Sinclair Primrose 2G11 6D6

Emulation N Bar 5522#  
 N Bar Primrose 2424  
 N Bar Moderation 9957  
 Ideal 4465 of 6807 4286  
 Sinclair Timeless 8BA4#  
 Sinclair K Bty OA3 7XT55  
 Sinclair Grass Master#  
 Sinclair Primrose 6D6 2S19

Individual Performance					EPD's				
BW	ADJ. WW	WR	ADJ. YW	YR	CED	BW	WW	MILK	YW
92	611	108	1006	101	1	1.7	40	23	59
Individual Performance					\$ Values				
ADG	Act. IMF	REA/100 lbs	Mat	SEN	\$M	\$W	\$F	\$G	\$B
2.90	3.44	0.98	19	78	41	47	21	68	

**Dam's Production** WR: 5 @ 99 YR: 2 @ 99

Good 0X2 son tracing back to Timeless and Grassmaster.



### SINCLAIR EXQUISITE L396

REG: \*20872814 | DOB: 03/16/23 | TATTOO: L396

N Bar Emulation EXT#  
**Sinclair Exquisite 0X2** 19919831  
 Sinclair Lady 3M18 4465#

Sinclair Pioneer 1RF1  
**Sinclair Lady Ida 7RM8 3FE19** 18845216  
 Sinclair Lady Ida 3FE19 7V63

Emulation N Bar 5522#  
 N Bar Primrose 2424  
 N Bar Moderation 9957  
 Ideal 4465 of 6807 4286  
 PBC 707 1M F0203#  
 N Bar Miss Emulous A404  
 Sinclair Emulation 5522 XP#  
 Sinclair Lady Ida 7V63 B5

Individual Performance					EPD's				
BW	ADJ. WW	WR	ADJ. YW	YR	CED	BW	WW	MILK	YW
95	592	105	1069	108	2	1.8	41	20	72
Individual Performance					\$ Values				
ADG	Act. IMF	REA/100 lbs	Mat	SEN	\$M	\$W	\$F	\$G	\$B
3.71	2.37	1.07	16	75	34	63	22	85	

**Dam's Production** WR: 5 @ 103 YR: 4 @ 107

Good performing 0X2.

## REF SIRE

### SINCLAIR EXQUISITE 0X2

REG: +19919831 | DOB: 02/13/20 | TATTOO: 0X2

Emulation N Bar 5522#  
**N Bar Emulation EXT** 10776479#  
 N Bar Primrose 2424

N Bar Moderation 9957  
**Sinclair Lady 3M18 4465#** 14489949  
 Ideal 4465 of 6807 4286

Emulation 31#  
 Ankony 8F78 Lass 8F275  
 Emulation 31#  
 Primrose N Bar 9962  
 N Bar Moderation 9955#  
 N Bar Queen Mother 6079  
 D H D Traveler 6807#  
 E E 4286 of Ideal 2240 1254

CED	BW	WW	YW	SC	MILK	DOC	MARB	REA	\$M	\$W	\$F	\$B	\$C
5	0.5	34	54	-.92	20	18	.16	-.05	70	39	63	81	175

0X2 is a standout replica of EXT, showing exceptional breed character, stoutness, and sound movement. He is thick and has a good disposition. 0X2's lineage includes the donor dam, 3M18, influential in the Sinclair and ZWT herds, and a full sister, Sinclair Lady 1X63, a prominent EXT daughter and donor in the Sinclair herd. Proudly owned with Brookhill Angus, KY.





### SINCLAIR EXECUTIVE L329

REG: \*20833593 | DOB: 03/08/23 | TATTOO: L329

Sinclair Black Iron 7UR26  
**Sinclair Executive 9UF3** 19472545  
 Sinclair Lady Ida 8XV12 C52#

Sinclair Exactly 4U2  
 Sinclair Erica 2FE2 8BT12  
 N Bar Emulation Ext V722  
 N Bar Lady Ida Z1453  
 Sinclair Timeless 8BA4#  
 Sinclair K Bty 2X7 6MB8#  
 Sinclair Emulation XXP#  
 Sinclair Queen 9V4 12A3

Sinclair Sun Dial 4TL2  
**Sinclair Queen 6TT14 4XX17#** 18506534  
 Sinclair Queen 4XX17 9V4

Individual Performance					EPD's				
BW	ADJ. WW	WR	ADJ. YW	YR	CED	BW	WW	MILK	YW
75	571	101	1080	105	11	-2.9	38	25	70
Individual Performance					\$ Values				
ADG	Act. IMF	REA/100 lbs	SEN	\$M	\$W	\$F	\$G	\$B	
2.74	3.17	1.18	8	75	42	54	40	95	

**Dam's Production** WR: 6 @ 107 YR: 3 @ 106  
 Heifer Bull with 2 top donors 8XV12, and 2X7 in his pedigree.

### REF SIRE SINCLAIR EXECUTIVE 9UF3

REG: 19472545 | DOB: 03/12/19 | TATTOO: 9UF3

Sinclair Exactly 4U2  
**Sinclair Black Iron 7UR26** 19016137  
 Sinclair Erica 2FE2 8BT12

Sinclair Executive 9XV2  
 Sinclair Lady OR109 03S3  
 Sinclair Emulation 5522 XP#  
 Sinclair Erica 8BT12 A18

N Bar Emulation Ext V722  
**Sinclair Lady Ida 8XV12 C52#** 16026999  
 N Bar Lady Ida Z1453

N Bar Emulation EXT#  
 N Bar Blackbird 4307#  
 N Bar Nighthawk  
 N Bar Lady Ida 4360

CED	BW	WW	YW	SC	MILK	DOC	MARB	REA	\$M	\$W	\$F	\$B	\$C
4	-0.7	45	71	.09	18	8	.39	.53	77	47	41	80	181

A phenotypic standout with chart busting performance ratios by the 8XV12 female. She is one of the top calf raisers in the Sinclair herd who has earned donor status from her elite production record. She is also the dam of Sinclair Broker 3RC33, owned by Chapman Cattle Co. AB. Proudly owned with Don Abarr, MN



### SINCLAIR EXECUTIVE L273

REG: \*20833617 | DOB: 03/03/23 | TATTOO: L273

Sinclair Black Iron 7UR26  
**Sinclair Executive 9UF3** 19472545  
 Sinclair Lady Ida 8XV12 C52#

Sinclair Exactly 4U2  
 Sinclair Erica 2FE2 8BT12  
 N Bar Emulation Ext V722  
 N Bar Lady Ida Z1453

Sinclair Broker 3RC33  
**Sinclair Enchantress 8K9** 19169644  
 Sinclair Enchantress 2OC17

Sinclair Entrepreneur 8R101  
 Sinclair Lady Ida 8XV12 C52#  
 O C C Great Plains 943G#  
 Sinclair Enchantress 0BA2

Individual Performance					EPD's				
BW	ADJ. WW	WR	ADJ. YW	YR	CED	BW	WW	MILK	YW
90	634	112	1040	105	3	0.1	47	20	75
Individual Performance					\$ Values				
ADG	Act. IMF	REA/100 lbs	SEN	\$M	\$W	\$F	\$G	\$B	
3.23	3.52	1.07	17	83	44	38	35	73	

**Dam's Production** WR: 4 @ 103 YR: 1 @ 105  
 High marbling 9UF3 son with performance.





Sinclair C Pride 1RL12 J204, the Powerful Donor Dam of Lot 37 and 38.



N Bar Clova Pride WP C2009, a Foundation Sinclair Donor and the Grandam of Lots 37 and 38.

**37 SINCLAIR EXACTLY L001**  
REG: \*20833649 | DOB: 02/16/23 | TATTOO: L001

Individual Performance						EPD's				
BW	ADJ. WW	WR	ADJ. YW	YR	CED	BW	WW	MILK	YW	
ET	538	100	962	100	4	-0.6	36	20	61	
Individual Performance						\$ Values				
ADG	Act. IMF	REA/100 lbs	SEN	\$M	\$W	\$F	\$G	\$B		
3.23	2.83	1.24	19	57	37	36	15	51		

Dam's Production WR: 7 @ 105 YR: 5 @ 104

Sinclair Executive 9XV2  
Sinclair Exactly 4U2 17798945  
Sinclair Lady 0R109 0353



Sinclair Rito Legacy 3R9  
Sinclair C Pride 1RL12 J204 16934634  
N Bar Clova Pride WP C2009

N Bar Emulation Ext V722  
N Bar Primrose Y3051#  
R R Rito 707#  
Sinclair Lady 0353 4465  
R R Rito 707#  
Ideal 4465 of 6807 4286  
N Bar Shadow X4124  
N Bar Clova Pride Z1553

**38 SINCLAIR EXACTLY L003**  
REG: \*20833650 | DOB: 02/22/23 | TATTOO: L003

Individual Performance						EPD's				
BW	ADJ. WW	WR	ADJ. YW	YR	CED	BW	WW	MILK	YW	
ET	576	100	1002	100	4	-0.9	40	20	65	
Individual Performance						\$ Values				
ADG	Act. IMF	REA/100 lbs	SEN	\$M	\$W	\$F	\$G	\$B		
3.06	2.4	1.13	16	57	41	38	11	49		

Dam's Production WR: 7 @ 105 YR: 5 @ 104

A pair of ET flush brothers from one of the thickest donor cows you can find. They are the type that makes really functional cows in tough country. The Clova Pride cows were at the N Bar ranch since the beginning and are still thriving. Loads of high production cow families. Grandam 7-102 BR, 7-103 WR, 6-102 YR.



Sinclair Exactly 4U2, the Sire of Lots 37 & 38.

**REF SIRE SINCLAIR EXACTLY 4U2**  
REG: 17798945 | DOB: 02/11/14 | TATTOO: 4U2

N Bar Emulation Ext V722  
Sinclair Executive 9XV2 16365949  
N Bar Primrose Y3051#  
  
R R Rito 707#  
Sinclair Lady 0R109 0353 16715219  
Sinclair Lady 0353 4465

N Bar Emulation EXT#  
N Bar Blackbird 4307#  
N Bar Emulation EXT#  
N Bar Primrose 2429#  
Rito N Bar  
Eriskay of Rollin Rock 3  
N Bar Shadow X4124  
Ideal 4465 of 6807 4286

CED	BW	WW	YW	SC	MILK	DOC	MARB	REA	\$M	\$W	\$F	\$B	\$C
2	1.2	46	73	.03	13	14	-.16	.33	57	40	58	64	140

4U2 is a unique sire that keeps cow size in check and adding muscle and thickness with added fleshing ability. His dam, 0R109, at age 14, is a donor at Sinclair. Proudly owned with Risse Family, SD





## SINCLAIR EXTREME L596

REG: \*20833636 | DOB: 02/17/23 | TATTOO: L596

Sinclair Extreme 4V2  
**Sinclair Extreme 3VA10** 17508003  
Sinclair Ms Emulous 0XZ12

Sinclair Exquisite 9X93  
**Sinclair Lady J670 8RC4** 20300869  
Sinclair Lady 8RC4 7RL30

N Bar Emulation Ext A1747  
N Bar Kinochtry Beauty 4339  
N Bar Extra B310 A144  
Sinclair Ms Emulous 7X31 D80  
N Bar Emulation Ext A1747  
Sinclair Primrose 7F4 A14  
Sinclair Entrepreneur 8R101  
Sinclair Lady 7RL30 1C8

### Individual Performance

BW	ADJ. WW	WR	ADJ. YW	YR	CED	BW	WW	MILK	YW
72	573	102	1063	111	6	0.7	45	21	83

### Individual Performance

ADG	Act. IMF	REA/100 lbs	SEN	SM	\$W	\$F	\$G	\$B
5.16	2.86	1.10	2	75	38	64	32	97

Dam's Production WR: 1 @ 102 YR: 1 @ 111

Low birth weight bull from a good performing young cow.



Sinclair Justified J574, sire of Lots 42, 43, 44 & 45.



## SINCLAIR EXTREME L629

REG: \*20833642 | DOB: 03/11/23 | TATTOO: L629

Sinclair Extreme 4V2  
**Sinclair Extreme 3VA10** 17508003  
Sinclair Ms Emulous 0XZ12

N Bar Emulation EXT#  
**Sinclair Lady J017 3T7** 20576661  
Sinclair Lady 3T7 4465

N Bar Emulation Ext A1747  
N Bar Kinochtry Beauty 4339  
N Bar Extra B310 A144  
Sinclair Ms Emulous 7X31 D80  
Emulation N Bar 5522#  
N Bar Primrose 2424  
N Bar Explosion TNT#  
Ideal 4465 of 6807 4286

### Individual Performance

BW	ADJ. WW	WR	ADJ. YW	YR	CED	BW	WW	MILK	YW
76	662	117	1057	110	6	-0.3	44	24	74

### Individual Performance

ADG	Act. IMF	REA/100 lbs	SEN	SM	\$W	\$F	\$G	\$B
1.13	3.34	1.15	8	63	45	63	34	97

Dam's Production WR: 1 @ 117 YR: 1 @ 110

A calving ease bull out of ET mother with a stacked pedigree.



## SINCLAIR JUSTIFIED L80

REG: \*20871002 | DOB: 03/06/23 | TATTOO: L80

KG Justified 3023#  
**Sinclair Justified J574** 20256119  
Sinclair Primrose 9L4 7FT12

Sinclair Emulation 0F4  
**Sinclair Lady 5FX6 2TL3** 18152036  
Sinclair Lady 2TL3 0X4

Connealy Judgment  
KG Miss Magic 1443  
Sinclair Plains Boss 5B02  
Sinclair Primrose 7FT12  
Emulation N Bar 5522#  
N Bar Kinochtry Bty SCC 2V3#  
Sinclair Timeless 8BA4#  
Sinclair Lady 0X4 3M19

### Individual Performance

BW	ADJ. WW	WR	ADJ. YW	YR	CED	BW	WW	MILK	YW
92	550	98	1017	102	7	-0.2	39	27	73

### Individual Performance

ADG	Act. IMF	REA/100 lbs	SEN	SM	\$W	\$F	\$G	\$B
3.87	2.82	1.09	10	72	40	56	39	96

Dam's Production WR: 5 @ 102 YR: 2 @ 100

Justified grandson tracing back to Plains Boss, Timeless, and Donor 4465.



## SINCLAIR JUSTIFIED L656

REG: \*20833646 | DOB: 03/03/23 | TATTOO: L656

KG Justified 3023#  
**Sinclair Justified J506** 20256117  
Sinclair Ms Wix 9FF18 6FX15

Vermilion Spur G356  
**Sinclair K BTY J171** 20213412  
Sinclair K Bty 8FA10 7FE4

Connealy Judgment  
KG Miss Magic 1443  
Sinclair Piney Creek 5FV5  
Sinclair Ms Wix 6FX15 3S1  
Connealy Spur#  
Vermilion Blackette 5211  
Sinclair Emulation 6FX2  
Sinclair K Bty 7FE4 E010#

### Individual Performance

BW	ADJ. WW	WR	ADJ. YW	YR	CED	BW	WW	MILK	YW
82	641	114	1092	114	4	2.1	65	28	111

### Individual Performance

ADG	Act. IMF	REA/100 lbs	SEN	SM	\$W	\$F	\$G	\$B
3.39	2.75	1.10	-15	86	58	77	45	122

Dam's Production WR: 1 @ 114 YR: 1 @ 114

High performing Justified grandson tracing back to the great V149 cow.



## SINCLAIR JUSTIFIED L363

REG: \*20872811 | DOB: 03/11/23 | TATTOO: L363

KG Justified 3023#  
**Sinclair Justified J574** 20256119  
Sinclair Primrose 9L4 7FT12

O C C Great Plains 943G#  
**Sinclair Lady 50C4 3TL39** 18155623  
Sinclair Lady 3TL39 1X32

Connealy Judgment  
KG Miss Magic 1443  
Sinclair Plains Boss 5B02  
Sinclair Primrose 7FT12  
N Bar Emulation EXT#  
Dixie Erica of C H 1019  
Sinclair Timeless 8BA4#  
Sinclair Lady 1X32 3T9

### Individual Performance

BW	ADJ. WW	WR	ADJ. YW	YR	CED	BW	WW	MILK	YW
86	560	99	1021	103	8	-0.3	38	26	78

### Individual Performance

ADG	Act. IMF	REA/100 lbs	SEN	SM	\$W	\$F	\$G	\$B
3.23	3.14	1.07	8	81	36	62	36	98

Dam's Production WR: 6 @ 104 YR: 4 @ 104

J574 son out of good performing Great Plains daughter.



Sinclair K BTY 7FE4 E010, The Foundation Great Grandam of Lot 41.





**44 SINCLAIR JUSTIFIED L398**  
 REG: \*20870988 | DOB: 03/18/23 | TATTOO: L398

KG Justified 3023#  
**Sinclair Justified J574** 20256119  
 Sinclair Primrose 9L4 7FT12

Sinclair Elation 6SX1  
**Sinclair Pride 9SG21 6TS5** 19475321  
 Sinclair Pride 6TS5 2188

Connealy Judgment  
 KG Miss Magic 1443  
 Sinclair Plains Boss 5B02  
 Sinclair Primrose 7FT12  
 Sinclair Vision 3SX12  
 Sinclair C Pride 2G72 7X34  
 Sitz Traveler 043#  
 Sitz Pride 2188

Individual Performance						EPD's				
BW	ADJ. WW	WR	ADJ. YW	YR	CED	BW	WW	MILK	YW	
74	546	97	1021	103	11	-1.9	38	29	78	
Individual Performance				Mat	\$ Values					
ADG	Act. IMF	REA/100 lbs	SEN	\$M	\$W	\$F	\$G	\$B		
3.06	2.32	1.21	0	78	41	68				

**Dam's Production** WR: 3 @ 105 YR: 2 @ 105

Calving Ease bull with high performing cow family. Grandam 4-99 BR, 4-109 WR, 3-105 YR



Sitz Pride  
 2188, the  
 Foundation  
 Great  
 Grandam of  
 Lot 44.



**45 SINCLAIR JUSTIFIED L577**  
 REG: \*20870971 | DOB: 02/15/23 | TATTOO: L577

KG Justified 3023#  
**Sinclair Justified J574** 20256119  
 Sinclair Primrose 9L4 7FT12

Sinclair Exquisite 9X6  
**Sinclair Enchantress J121** 20263098  
 Sinclair Enchantress 6HX26

Connealy Judgment  
 KG Miss Magic 1443  
 Sinclair Plains Boss 5B02  
 Sinclair Primrose 7FT12  
 N Bar Emulation EXT#  
 Sinclair K Bty 9P31 V149#  
 Sinclair Line-XX 2H1  
 Sinclair Enchantress WP 40E3

Individual Performance						EPD's				
BW	ADJ. WW	WR	ADJ. YW	YR	CED	BW	WW	MILK	YW	
84	552	98	1027	107	4	2.0	43	28	85	
Individual Performance				Mat	\$ Values					
ADG	Act. IMF	REA/100 lbs	SEN	\$M	\$W	\$F	\$G	\$B		
3.23	3.06	1.10	6	72	38	67	38	106		

**Dam's Production** WR: 1 @ 98 YR: 1 @ 107

Good performing J574 son tracing back to Donor V149 and Emblazon. Grandam 6-99 BR, 6-103 WR, 4-102 YR.

**REF SIRE**

**SINCLAIR JUSTIFIED J574**  
 REG: 20256119 | DOB: 01/31/21 | TATTOO: J574

Connealy Judgment  
**KG Justified 3023** 17707279 #  
 KG Miss Magic 1443

Sinclair Plains Boss 5B02  
**Sinclair Primrose 9L4 7FT12** 19475257  
 Sinclair Primrose 7FT12

Connealy Consensus 7229#  
 Entrine of Conanga 9876#  
 Sitz Wisdom 481T#  
 KG Miss Magic 3528  
 Sinclair Patriarch 3B47  
 Sinclair Lady Ida 7V19 04F3  
 Sinclair Emulation 4FX1  
 Sinclair Primrose 5TL59 8P5#

CED	BW	WW	YW	SC	MILK	DOC	MARB	REA	\$M	\$W	\$F	\$B	\$C
6	0.4	45	89	.97	27	.79	.08	85	42	67	118	238	

Justified has complemented the Sinclair females very well. J574 displays just that as he is a top performer but still maintains more than enough calving ease. Daughters are fabulous young females that are feminine fronted and beautiful uddered, proving to make excellent cows in range environments. An elite maternal sire. Proudly owned with Scott Peterson





### SINCLAIR JUSTIFIED L319

REG: \*20872802 | DOB: 03/07/23 | TATTOO: L319

KG Justified 3023#  
**Sinclair Justified J575** 20256116  
 Sinclair Enchantress 9SG13

N Bar Emulation Ext A1747  
**Sinclair Lady Ida 9V10 3TL12** 19602918  
 Sinclair Lady Ida 3TL12 1XX9

Connealy Judgment  
 KG Miss Magic 1443  
 Sinclair Elation 6SX1  
 Sinclair Enchantress 6HX26  
 N Bar Emulation EXT#  
 N Bar Clova Pride U3031  
 Sinclair Timeless 8BA4#  
 Sinclair Lady Ida 1XX9 3S41

Individual Performance					EPD's				
BW	ADJ. WW	WR	ADJ. YW	YR	CED	BW	WW	MILK	YW
82	567	101	996	100	7	-1.1	50	28	92
Individual Performance				Mat	\$ Values				
ADG	Act. IMF	REA/100 lbs	SEN	\$M	\$W	\$F	\$G	\$B	
4.03	3.43	1.04	-2	80	51	64	38	102	

**Dam's Production WR: 3 @ 101 YR: 2 @ 106**

High gaining J575 son. Grandam 3-101 BR, 3-101 WR, 2-101 YR.



### SINCLAIR JUSTIFIED L344

REG: \*20872806 | DOB: 03/09/23 | TATTOO: L344

KG Justified 3023#  
**Sinclair Justified J575** 20256116  
 Sinclair Enchantress 9SG13

Sinclair Exquisite 6X4  
**Sinclair Primrose 9XG12 6RV6** 19475144  
 Sinclair Primrose 6RV6 3D10#

Connealy Judgment  
 KG Miss Magic 1443  
 Sinclair Elation 6SX1  
 Sinclair Enchantress 6HX26  
 N Bar Emulation EXT#  
 Sinclair M Emulous 4ET1 D47#  
 Sinclair Rito 9R7  
 Sinclair Primrose 3D10 6S5

Individual Performance					EPD's				
BW	ADJ. WW	WR	ADJ. YW	YR	CED	BW	WW	MILK	YW
100	651	115	1168	117	2	2.5	63	30	116
Individual Performance				Mat	\$ Values				
ADG	Act. IMF	REA/100 lbs	SEN	\$M	\$W	\$F	\$G	\$B	
3.87	3.06	0.91	-15	73	54	81	35	116	

**Dam's Production WR: 2 @ 110 YR: 2 @ 109**

High Performance J575 son with outstanding cow performance .  
 Grandam 6-103 BR, 6-106 WR, 2-103 YR.



N Bar Emulation EXT A1747, the High Performance EXT Son and Maternal Grand sire of Lot 46.

### REF SIRE

### SINCLAIR JUSTIFIED J575

REG: 20256116 | DOB: 01/31/21 | TATTOO: J575

Connealy Judgment  
**KG Justified 3023** 17707279 #  
 KG Miss Magic 1443

Sinclair Elation 6SX1  
**Sinclair Enchantress 9SG13** 19475320  
 Sinclair Enchantress 6HX26

Connealy Consensus 7229#  
 Entrine of Conanga 9876#  
 Sitz Wisdom 481T#  
 KG Miss Magic 3528  
 Sinclair Vision 3SX12  
 Sinclair C Pride 2G72 7X34  
 Sinclair Line-XX 2H1  
 Sinclair Enchantress WP 40E3

CED	BW	WW	YW	SC	MILK	DOC	MARB	REA	\$M	\$W	\$F	\$B	SC
12	-2.6	61	112	.72	34	21	.73	.10	81	72	72	115	230

J575 has been a complete standout since day one. This premier calving ease herdsire is a man among boys, in the calving ease division, as he is heavy muscled, high volume, and easy fleshing. He is a near-perfect replica of his famous sire. Proudly Owned with JR Ranch, Lance & Lynette Cline





**48 SINCLAIR EXQUISITE L288**  
 REG: \*20872793 | DOB: 03/05/23 | TATTOO: L288

N Bar Emulation EXT#  
**Sinclair Exquisite 9X15** 19602928  
 Rito Majesty 5A61 of F0203

Cole Creek Cedar Ridge 1V#  
**Sinclair Pride 5CR14 2188** 18215625  
 Sitz Pride 2188

Emulation N Bar 5522#  
 N Bar Primrose 2424  
 PBC 707 1M F0203#  
 B A F Excel Lady 2104  
 Cole Creek Black Cedar 46P#  
 Cole Creek Clovanada 49S#  
 N Bar Emulation EXT#  
 Sitz Pride 838#

Individual Performance					EPD's				
BW	ADJ. WW	WR	ADJ. YW	YR	CED	BW	WW	MILK	YW
76	644	114	1148	115	10	-0.6	50	24	86

Individual Performance				Mat		\$ Values			
ADG	Act. IMF	REA/100 lbs	\$EN	\$M	\$W	\$F	\$G	\$B	\$B
2.42	2.92	1.01	1	54	49	67	23	90	

**Dam's Production** WR: 7 @ 108 YR: 4 @ 108

Calving Ease bull with Performance. Donor Grandam 10-96 BR, 11-102 WR, 9-105 YR

**49 SINCLAIR EXQUISITE L338**  
 REG: \*20872804 | DOB: 03/08/23 | TATTOO: L338

N Bar Emulation EXT#  
**Sinclair Exquisite 9X15** 19602928  
 Rito Majesty 5A61 of F0203

Sinclair Cloud Peak 5O4  
**Sinclair Blkcap 8ON3 1N14** 19279795  
 Sinclair Blkcap 1N14 9XT0#

Emulation N Bar 5522#  
 N Bar Primrose 2424  
 PBC 707 1M F0203#  
 B A F Excel Lady 2104  
 Basin Rainmaker 654X#  
 Sinclair Eriskay 2N1 7883#  
 N Bar Nitro  
 Sinclair Blkcap 9XT0 2J92#

Individual Performance					EPD's				
BW	ADJ. WW	WR	ADJ. YW	YR	CED	BW	WW	MILK	YW
95	592	105	1050	106	4	0.8	42	22	70

Individual Performance				Mat		\$ Values			
ADG	Act. IMF	REA/100 lbs	\$EN	\$M	\$W	\$F	\$G	\$B	\$B
3.23	3.25	1.05	14	67	40	55	29	84	

**Dam's Production** WR: 4 @ 100 YR: 1 @ 106

Good performing 9X15 son tracing to 654X, 4X13, and Donor Dam 2N1. Grandam 7-95 BR, 7-105 WR, 5-100 YR.



Sitz Pride 2188, the Foundation Grandam of Lot 48.

Original N-Bar Genetics Working For You

Staying true  
to the Legacy



**REF SIRE SINCLAIR EXQUISITE 9X15**  
 REG: +19602928 | DOB: 01/24/19 | TATTOO: 9X15

Emulation N Bar 5522#  
**N Bar Emulation EXT** 10776479#  
 N Bar Primrose 2424

PBC 707 1M F0203#  
**Rito Majesty 5A61 of F0203** 12450216  
 B A F Excel Lady 2104

Emulation 31#  
 Ankony 8F78 Lass 8F275  
 Emulation 31#  
 Primrose N Bar 9962  
 R R Rito 707#  
 Evocate Princess #  
 Rito Excel 809#  
 Emulous Bell 2225

CED	BW	WW	YW	SC	MILK	DOC	MARB	REA	\$M	\$W	\$F	\$B	\$C
5	1.2	42	63	.81	19	-3	.22	.27	52	41	60	85	162

9X15 has dominated in every aspect of performance and is full of muscle with the time-tested EXT-Rito heritage. His dam, Majesty 5A61, was an elite donor in the program.



51



**SINCLAIR EXQUISITE L87**

REG: \*20872824 | DOB: 03/07/23 | TATTOO: L87

N Bar Emulation EXT#  
**Sinclair Exquisite 9X6** 19477703  
 Sinclair K Bty 9P31 V149#

Sinclair Grass Master#  
**Sinclair Enchantress 3G1** 17469791  
 Sinclair Enchantress 7P25

Emulation N Bar 5522#  
 N Bar Primrose 2424  
 N Bar Prime Time D806#  
 N Bar Kinochtry Beauty 4317#  
 BT Right Time 24J#  
 N Bar Primrose Y3051#  
 N Bar Prime Time D806#  
 Sinclair Enchantress 5MB16

Individual Performance					EPD's				
BW	ADJ. WW	WR	ADJ. YW	YR	CED	BW	WW	MILK	YW
92	606	107	1020	103	4	1.0	37	30	66
Individual Performance				Mat	\$ Values				
ADG	Act. IMF	REA/100 lbs	SEN	\$M	\$W	\$F	\$G	\$B	
3.06	3.98	1.07	12	70	41	64	40	104	

**Dam's Production** WR: 9 @ 103 YR: 6 @ 104

Good 9X6 son going back to Donor V149, Grass Master, and D806.



**SINCLAIR EXQUISITE L350**

REG: \*20872809 | DOB: 03/09/23 | TATTOO: L350

N Bar Emulation EXT#  
**Sinclair Exquisite 9X15** 19602928  
 Rito Majesty 5A61 of F0203

Sinclair Rollin Coal 5K2  
**Sinclair K Bty 8KF22 1BA24** 19281339  
 Sinclair K Bty 1BA24 5P65#

Emulation N Bar 5522#  
 N Bar Primrose 2424  
 PBC 707 1M F0203#  
 B A F Excel Lady 2104  
 Sinclair Broker 3RC33  
 Sinclair Ms Emulous 1FE23  
 Sinclair IN Time 6BT39  
 Sinclair K Bty 5P65 2S24

Individual Performance					EPD's				
BW	ADJ. WW	WR	ADJ. YW	YR	CED	BW	WW	MILK	YW
94	604	107	1087	109	4	0.6	43	21	72
Individual Performance				Mat	\$ Values				
ADG	Act. IMF	REA/100 lbs	SEN	\$M	\$W	\$F	\$G	\$B	
2.58	4.79	1.06	14	65	40	55	38	93	

**Dam's Production** WR: 4 @ 101 YR: 2 @ 103

High Marbling 9X15 son that traces back to In Time 6BT39, and D806.



Sinclair Exquisite 9X6, a Featured Son of the K BTY 9P31 Donor, whose First Daughters are Making Wonderful Cows in the Sinclair Program, and the Sire of Lot 50.



Sinclair K BTY 9P31 V149, the Paternal Grandam of Lot 50.



**SINCLAIR EXQUISITE L128**

REG: \*20833575 | DOB: 03/14/23 | TATTOO: L128

N Bar Emulation EXT#  
**Sinclair Exquisite 9X15** 19602928  
 Rito Majesty 5A61 of F0203

N Bar Moderation 9955 U1869  
**Sinclair Primrose 0MD3 5TL32** 20561987  
 Sinclair Primrose 5TL32 3RC1#

Emulation N Bar 5522#  
 N Bar Primrose 2424  
 PBC 707 1M F0203#  
 B A F Excel Lady 2104  
 N Bar Moderation 9955#  
 N Bar Kinochtry Beauty 1946  
 Sinclair Timeless 8BA4#  
 Sinclair Primrose 3RC1 7FF4

Individual Performance					EPD's				
BW	ADJ. WW	WR	ADJ. YW	YR	CED	BW	WW	MILK	YW
89	571	101	984	99	4	1.2	41	20	69
Individual Performance				Mat	\$ Values				
ADG	Act. IMF	REA/100 lbs	SEN	\$M	\$W	\$F	\$G	\$B	
2.58	2.96	1.21	12	45	37	57	26	84	

**Dam's Production** WR: 1 @ 101 YR: 1 @ 99

Grandam 6-101 BR, 6-105 WR, 2-117 YR.



### SINCLAIR ELATION L177

REG: \*20874068 | DOB: 04/14/23 | TATTOO: L177

Sinclair Vision 3SX12  
**Sinclair Elation 6SX1** 18488262  
Sinclair C Pride 2G72 7X34

Sinclair Pioneer 1RF1  
**Sinclair Lady 3RM40 1X53** 17749572  
Sinclair Lady 1X53 0653

Sinclair Vision X 857  
Sinclair K Bty OF1 2V3  
Sinclair Grass Master#  
Sinclair C Pride 7X34 K325#  
PBC 707 1M F0203#  
N Bar Miss Emulous A404  
N Bar Emulation EXT#  
Sinclair Lady 06S3 4465

Individual Performance					EPD's				
BW	ADJ. WW	WR	ADJ. YW	YR	CED	BW	WW	MILK	YW
71	642	114			14	-3.5	41	26	70
Individual Performance					\$ Values				
ADG	Act. IMF	REA/100 lbs	SEN	Mat	\$M	\$W	\$F	\$G	\$B
3.39	3.47	1.21		8	75	47	52	35	87

**Dam's Production** WR: 9 @ 101 YR: 5 @ 95

Light birth weight, calving ease son of Elation 6SX1.



Sinclair Lady 06S3 4465, the Powerful Great Grandam of L177.



### SINCLAIR ELATION L433

REG: \*20833623 | DOB: 03/29/23 | TATTOO: L433

Sinclair Vision 3SX12  
**Sinclair Elation 6SX1** 18488262  
Sinclair C Pride 2G72 7X34

Sinclair X-Plus 3XX20  
**Sinclair Primrose 5PX13 2XR4#** 18152673  
Sinclair Primrose 2XR4 0A14

Sinclair Vision X 857  
Sinclair K Bty OF1 2V3  
Sinclair Grass Master#  
Sinclair C Pride 7X34 K325#  
Sinclair Emulation XXP#  
Sinclair Primrose 5R47 D011  
Sinclair Emulation X 8X17  
Sinclair Primrose 0A14 8R5

Individual Performance					EPD's				
BW	ADJ. WW	WR	ADJ. YW	YR	CED	BW	WW	MILK	YW
89	684	121			7	-0.5	49	30	90
Individual Performance					\$ Values				
ADG	Act. IMF	REA/100 lbs	SEN	Mat	\$M	\$W	\$F	\$G	\$B
3.71	3.14	1.08		-9	62	51	68	34	102

**Dam's Production** WR: 7 @ 109 YR: 2 @ 109

Good performing bull from a high performing cow.



### SINCLAIR ELATION L434

REG: \*20874070 | DOB: 03/29/23 | TATTOO: L434

Sinclair Vision 3SX12  
**Sinclair Elation 6SX1** 18488262  
Sinclair C Pride 2G72 7X34

Sinclair Line-XX 2H1  
**Sinclair Enchantress 6HX26** 18795483  
Sinclair Enchantress WP 40E3

Sinclair Vision X 857  
Sinclair K Bty OF1 2V3  
Sinclair Grass Master#  
Sinclair C Pride 7X34 K325#  
Sinclair Line X 8XV6  
Sinclair Primrose 9IT13 5R47  
O C C Emblazon 854E#  
N Bar Enchantress WP F3619

Individual Performance					EPD's				
BW	ADJ. WW	WR	ADJ. YW	YR	CED	BW	WW	MILK	YW
86	572	101			10	-1.0	36	30	65
Individual Performance					\$ Values				
ADG	Act. IMF	REA/100 lbs	SEN	Mat	\$M	\$W	\$F	\$G	\$B
1.77	2.58	1.14		9	61	45	48	29	76

**Dam's Production** WR: 6 @ 103 YR: 4 @ 102

Grandam 3-96 BR, 3-109 WR, 2-101 YR.



### SINCLAIR ELATION L418

REG: \*20874069 | DOB: 03/25/23 | TATTOO: L418

Sinclair Vision 3SX12  
**Sinclair Elation 6SX1** 18488262  
Sinclair C Pride 2G72 7X34

Sinclair Emulation 4FX1  
**Sinclair Primrose 7FT13** 18805030  
Sinclair Primrose 5TL37 3I11

Sinclair Vision X 857  
Sinclair K Bty OF1 2V3  
Sinclair Grass Master#  
Sinclair C Pride 7X34 K325#  
Sinclair Emulation OF4  
Sinclair M Emulous 4ET1 D47#  
Sinclair Timeless 8BA4#  
Sinclair Primrose 3I11 8P3

Individual Performance					EPD's				
BW	ADJ. WW	WR	ADJ. YW	YR	CED	BW	WW	MILK	YW
81	592	105			12	-2.7	39	29	75
Individual Performance					\$ Values				
ADG	Act. IMF	REA/100 lbs	SEN	Mat	\$M	\$W	\$F	\$G	\$B
1.45	3.03	1.25		5	71	45	54	33	87

**Dam's Production** WR: 5 @ 103 YR: 3 @ 98



### SINCLAIR ELATION L200

REG: \*20833656 | DOB: 04/21/23 | TATTOO: L200

Sinclair Vision 3SX12  
**Sinclair Elation 6SX1** 18488262  
Sinclair C Pride 2G72 7X34

Sinclair Emulation XXP#  
**Sinclair Edella 5XX17 10K1** 18154217  
Sinclair Edella 10K1 7X53

Sinclair Vision X 857  
Sinclair K Bty OF1 2V3  
Sinclair Grass Master#  
Sinclair C Pride 7X34 K325#  
N Bar Emulation EXT#  
N Bar Primrose Y3051#  
O C C Kiddo 832K  
Sinclair Edella 7X53 3S5

Individual Performance					EPD's				
BW	ADJ. WW	WR	ADJ. YW	YR	CED	BW	WW	MILK	YW
97	637	108			1	2.1	48	26	88
Individual Performance					\$ Values				
ADG	Act. IMF	REA/100 lbs	SEN	Mat	\$M	\$W	\$F	\$G	\$B
3.87	2.56	1.02		-3	51	42	65	33	98

**Dam's Production** WR: 7 @ 106 YR: 2 @ 100

Good performing son tracing back to XXP, and OCC Kiddo.



### SINCLAIR EMULATION L151

REG: \*20875986 | DOB: 03/23/23 | TATTOO: L151

Sinclair Emulation 4FX1  
**Sinclair Emulation 8FT8** 19168723  
Sinclair Enchantress 6HX26

Sinclair Executive 9XV2  
**Sinclair Lady 6U20 3RM21** 18496924  
Sinclair Lady 3RM21 1A4

Sinclair Emulation OF4  
Sinclair M Emulous 4ET1 D47#  
Sinclair Line-XX 2H1  
Sinclair Enchantress WP 40E3  
N Bar Emulation Ext V722  
N Bar Primrose Y3051#  
Sinclair Pioneer 1RF1  
Sinclair Lady 1A4 9JP22

Individual Performance					EPD's				
BW	ADJ. WW	WR	ADJ. YW	YR	CED	BW	WW	MILK	YW
86	558	99			8	-0.4	35	25	58
Individual Performance					\$ Values				
ADG	Act. IMF	REA/100 lbs	SEN	Mat	\$M	\$W	\$F	\$G	\$B
2.90	2.97	1.24		17	57	39	42	19	61

**Dam's Production** WR: 6 @ 100 YR: 2 @ 94



Sinclair Emulation 8FT8, the Sire of Lot 58.



**61 SINCLAIR JUSTIFIED L26**  
 REG: \*20871008 | DOB: 02/25/23 | TATTOO: L26

KG Justified 3023#  
**Sinclair Justified J574** 20256119  
 Sinclair Primrose 9L4 7FT12

Emulation 31#  
**Sinclair Enchantress 9A37** 16580179  
 Sinclair Enchantress 7P14

Connealy Judgment  
 KG Miss Magic 1443  
 Sinclair Plains Boss 5B02  
 Sinclair Primrose 7FT12  
 F C R Elation Lad 652  
 Miss Emulous 243  
 N Bar Prime Time D806#  
 Sinclair Enchantress 5BT1

Individual Performance					EPD's				
BW	ADJ. WW	WR	ADJ. YW	YR	CED	BW	WW	MILK	YW
73	526	93	932	93	10	-1.9	33	24	61
Individual Performance					\$ Values				
ADG	Act. IMF	REA/100 lbs	\$EN	\$M	\$W	\$F	\$G	\$B	
2.10	2.72	1.07	18	72	36	43	33	76	

**Dam's Production** WR: 13 @ 99 YR: 10 @ 99  
 Calving Ease son out of solid Emulation 31 daughter. Grandam 6-105 BR, 6-106 WR, 5-107 YR.

**59 SINCLAIR JUSTIFIED L528**  
 REG: \*20872264 | DOB: 02/10/23 | TATTOO: L528

Connealy Judgment  
**KG Justified 3023** 17707279#  
 KG Miss Magic 1443

Connealy Gary  
**Sinclair Pride J406** 20126852  
 Sinclair Pride 6T55 2188

Connealy Consensus 7229#  
 Entrine of Conanga 9876#  
 Sitz Wisdom 481T#  
 KG Miss Magic 3528

Connealy Niobrara 5451  
 Hertha of Conanga 1639  
 Sitz Traveler 043#  
 Sitz Pride 2188

Individual Performance					EPD's				
BW	ADJ. WW	WR	ADJ. YW	YR	CED	BW	WW	MILK	YW
74	580	99	1009	99	6	0.6	62	26	110
Individual Performance					\$ Values				
ADG	Act. IMF	REA/100 lbs	\$EN	\$M	\$W	\$F	\$G	\$B	
2.74	3.2	1.15	-7	90	56	73	49	123	

**Dam's Production** WR: 1 @ 99 YR: 1 @ 99  
 Calving Ease Justified son tracing back to the great donor cow Pride 2188. Grandam 4-99 BR, 4-109 WR, 3-105 YR

**60 SINCLAIR JUSTIFIED L510**  
 REG: \*20872817 | DOB: 02/06/23 | TATTOO: L510

Connealy Judgment  
**KG Justified 3023** 17707279#  
 KG Miss Magic 1443

Sinclair Executive 9UF3  
**Sinclair Erica J58** 20254359  
 Sinclair Erica 8X42 A18

Connealy Consensus 7229#  
 Entrine of Conanga 9876#  
 Sitz Wisdom 481T#  
 KG Miss Magic 3528

Sinclair Black Iron 7UR26  
 Sinclair Lady Ida 8XV12 C52#  
 N Bar Emulation EXT#  
 Rito Majesty 4A18 of F0203

Individual Performance					EPD's				
BW	ADJ. WW	WR	ADJ. YW	YR	CED	BW	WW	MILK	YW
70	598	100	1070	100	8	-0.4	51	24	88
Individual Performance					\$ Values				
ADG	Act. IMF	REA/100 lbs	\$EN	\$M	\$W	\$F	\$G	\$B	
3.23	4.11	1.15	11	95	49	67			

**Dam's Production** WR: 1 @ 100 YR: 1 @ 100  
 High Marbling Justified son tracing back to EXT and the Great Donor 8XV12.

**62 SINCLAIR JUSTIFIED L339**  
 REG: \*20871000 | DOB: 03/08/23 | TATTOO: L339

KG Justified 3023#  
**Sinclair Justified J574** 20256119  
 Sinclair Primrose 9L4 7FT12

Sinclair X-Plus 3XX20  
**Sinclair Lass 5PX9 2FE15** 18152669  
 Sinclair Lass 2FE15 8BA5

Connealy Judgment  
 KG Miss Magic 1443  
 Sinclair Plains Boss 5B02  
 Sinclair Primrose 7FT12

Sinclair Emulation XXP#  
 Sinclair Primrose 5R47 D011  
 Sinclair Emulation 5522 XP#  
 Sinclair Lass 8BA5 3P24

Individual Performance					EPD's				
BW	ADJ. WW	WR	ADJ. YW	YR	CED	BW	WW	MILK	YW
93	575	102	967	97	2	1.7	40	25	76
Individual Performance					\$ Values				
ADG	Act. IMF	REA/100 lbs	\$EN	\$M	\$W	\$F	\$G	\$B	
2.42	2.92	1.11	12	85	36	52	39	91	

**Dam's Production** WR: 5 @ 101 YR: 2 @ 97

**63 SINCLAIR JUSTIFIED L653**  
 REG: \*20833645 | DOB: 03/02/23 | TATTOO: L653

KG Justified 3023#  
**Sinclair Justified J557** 20256126  
 Sinclair Erica 9KF5 4U1

Sinclair X-Changer 2FE9  
**Sinclair Ms Emulous J173** 20253785  
 Sinclair Ms Emulous 5FX21

Connealy Judgment  
 KG Miss Magic 1443  
 Sinclair Rollin Coal 5K2  
 Sinclair Erica 4U1 8BT12#

Sinclair Emulation 5522 XP#  
 Sinclair Blackie 7V3 2P18  
 Sinclair Emulation 0F4  
 Sinclair Ms Emulous 2S17 D80#

Individual Performance					EPD's				
BW	ADJ. WW	WR	ADJ. YW	YR	CED	BW	WW	MILK	YW
74	635	113	977	113	5	0.8	55	23	96
Individual Performance					\$ Values				
ADG	Act. IMF	REA/100 lbs	\$EN	\$M	\$W	\$F	\$G	\$B	
2.74	3.26	1.16	2	88	49	62	38	100	

**Dam's Production** WR: 1 @ 113 YR: 1 @ 113  
 Low birth weight good performing bull from a young cow going back to Shadow and the Donor X412.

*Genetics for  
 the Long Haul*



KG Justified 302, the Sire of Lots 59, 60, 61 & 62.



## SINCLAIR BLACK IRON L500

REG: \*20833624 | DOB: 01/19/23 | TATTOO: L500

Sinclair Exactly 4U2  
**Sinclair Black Iron 7UR26** 19016137  
 Sinclair Erica 2FE2 8BT12

N Bar Emulation EXT#  
**Sinclair Eriskay 3X32 2C11** 17578698  
 Sinclair Eriskay 2C11 7883

Sinclair Executive 9XV2  
 Sinclair Lady OR109 0353  
 Sinclair Emulation 5522 XP#  
 Sinclair Erica 8BT12 A18  
 Emulation N Bar 5522#  
 N Bar Primrose 2424  
 D H D Traveler 6807#  
 Papa Eriskay 7883

Individual Performance					EPD's				
BW	ADJ. WW	WR	ADJ. YW	YR	CED	BW	WW	MILK	YW
60	617	107	1070	104	-1	3.2	50	18	83

Individual Performance				Mat	\$ Values				
ADG	Act. IMF	REA/100 lbs	\$EN	\$M	\$W	\$F	\$G	\$B	\$C
4.03	2.93	1.06	6	54	36	58	25	84	

**Dam's Production** WR: 4 @ 104 YR: 2 @ 98

These 7UR26 sons are high gaining with a ADG over 4 lbs, they will produce feeder cattle .

## REF SIRE SINCLAIR BLACK IRON 7UR26

REG: 19016137 | DOB: 02/15/17 | TATTOO: 7UR26

Sinclair Executive 9XV2  
**Sinclair Exactly 4U2** 17798945  
 Sinclair Lady OR109 0353

Sinclair Emulation 5522 XP#  
**Sinclair Erica 2FE2 8BT12** 17199707  
 Sinclair Erica 8BT12 A18

N Bar Emulation Ext V722  
 N Bar Primrose Y3051#  
 R R Rito 707#  
 Sinclair Lady 0353 4465  
 Emulation N Bar 5522#  
 N Bar Primrose Y3051#  
 BT Right Time 24J#  
 Rito Majesty 4A18 of F0203

CED	BW	WW	YW	SC	MILK	DOC	MARB	REA	\$M	\$W	\$F	\$B	\$C
-2	3.9	57	91	.07	15	11	.13	.58	64	42	56	84	173

STUD! Is what accurately describes this stout bull with a docile disposition . Black Iron combines the Primrose, Ms Emulous and Lady cow families. Black Iron blends 3 of the major cows from the Primrose family – N Bar Primrose 2424 – N Bar Primrose Y3051 – and – N Bar Primrose 4320. His weaning ratio was 119 and yearling ratio was 116







### SINCLAIR BLACK IRON L501

REG: 20884399 | DOB: 1/21/2023 | TATTOO: 501

Sinclair Exactly 4U2  
**Sinclair Black Iron 7UR26** 19016137  
 Sinclair Erica 2FE2 8BT12

Sinclair Emulation XXP#  
**Sinclair Eriskay 2XX7 7V74** 17197416  
 Sinclair Eriskay 7V74 707

Sinclair Executive 9XV2  
 Sinclair Lady OR109 03S3  
 Sinclair Emulation 5522 XP#  
 Sinclair Erica 8BT12 A18

N Bar Emulation EXT#  
 N Bar Primrose Y3051#  
 N Bar Emulation Ext A1747  
 JW 707 Eriskay 31 2814

Individual Performance					EPD's				
BW	ADJ. WW	WR	ADJ. YW	YR	CED	BW	WW	MILK	YW
88	556	97	1036	97	4	2.2	47	19	82
Individual Performance				Mat	\$ Values				
ADG	Act. IMF	REA/100 lbs	SEN	\$M	\$W	\$F	\$G	\$B	
4.19			6	54	41	68	30	98	

**Dam's Production WR: @ YR: @**

Stout 7UR26 son out of a good producing XXP daughter. Grandam 3-96 BR, 3-103 WR, 2-102 YR.



### SINCLAIR BLACK IRON L504

REG: \*20833625 | DOB: 01/31/23 | TATTOO: L504

Sinclair Exactly 4U2  
**Sinclair Black Iron 7UR26** 19016137  
 Sinclair Erica 2FE2 8BT12

Basin Rainmaker 654X#  
**Sinclair Eriskay 507 2N1** 18313183  
 Sinclair Eriskay 2N1 7883#

Sinclair Executive 9XV2  
 Sinclair Lady OR109 03S3  
 Sinclair Emulation 5522 XP#  
 Sinclair Erica 8BT12 A18

Basin Rainmaker D S 380U#  
 Basin Bardolene 423U  
 D H D Traveler 6807#  
 Papa Eriskay 7883

Individual Performance					EPD's				
BW	ADJ. WW	WR	ADJ. YW	YR	CED	BW	WW	MILK	YW
104	612	106	1140	111	-4	4.8	53	24	98
Individual Performance				Mat	\$ Values				
ADG	Act. IMF	REA/100 lbs	SEN	\$M	\$W	\$F	\$G	\$B	
4.35	4.41	1.06	-6	49	35	61	36	98	

**Dam's Production WR: 6 @ 108 YR: 3 @ 108**

High marbling high performance out of a outstanding cow. Grandam Donor 2N1, 8-100 BR, 8-111, 5-108 YR.



Sinclair Eriskay 2N1, the Legendary Performance Queen and Grandam of Lot 66.



## SINCLAIR LONGMIRE L364

REG: \*20833622 | DOB: 03/11/23 | TATTOO: L364

S A V Renown 3439#  
**Reisig Longmire 8326** 19448009  
 BUF Eriskay 7417

Rito 707 of Ideal 3407 7075  
 S A V Blackcap May 4136  
 N Bar Emulation EXT#  
 J Bar 7 Eriskay Q13-71K1#  
 Sinclair Deliverance 5U38  
 Sinclair Delia 1FE18 404  
 Sinclair Rito Legacy 3R9  
 N Bar Miss Emulous A404

Sinclair Delivery 7UD6  
**Sinclair Ms Emulous 9UE9** 19475360  
 Sinclair Ms Emulous 2RL5 D80#

Individual Performance					EPD's				
BW	ADJ. WW	WR	ADJ. YW	YR	CED	BW	WW	MILK	YW
76	548	97	948	95	9	-0.9	34	22	59
Individual Performance					Mat				
ADG	Act. IMF	REA/100 lbs	SEN	\$M	\$W	\$F	\$G	\$B	
2.58	3.18	1.14	17	76	35	29	23	53	

**Dam's Production** WR: 3 @ 100 YR: 3 @ 99

Light Birth Calving ease Longmire son. Grandam 10-102 BR, 10-105 WR, 8-104 YR



## SINCLAIR LONGMIRE L326

REG: \*20872826 | DOB: 03/08/23 | TATTOO: L326

S A V Renown 3439#  
**Reisig Longmire 8326** 19448009  
 BUF Eriskay 7417

Rito 707 of Ideal 3407 7075  
 S A V Blackcap May 4136  
 N Bar Emulation EXT#  
 J Bar 7 Eriskay Q13-71K1#  
 Rito Revolve OR5  
 Sinclair Primrose 6X40 A14  
 N Bar Emulation EXT#  
 N Bar Lady Ida S C C 2P37

Sinclair Rito 3R16  
**Sinclair Lady Ida 5RA1 1X55** 18152614  
 Sinclair Lady Ida 1X55 2P37

Individual Performance					EPD's				
BW	ADJ. WW	WR	ADJ. YW	YR	CED	BW	WW	MILK	YW
83	618	110	1074	104	8	-0.9	37	22	66
Individual Performance					Mat				
ADG	Act. IMF	REA/100 lbs	SEN	\$M	\$W	\$F	\$G	\$B	
2.74	3.93	1.04	10	71	37	39	25	64	

**Dam's Production** WR: 6 @ 101 YR: 2 @ 101

Style, Look, Length, high performance Longmire with high calving ease score!



Reisig Longmire 8326, the Sire of Lots 67 & 68.



## SINCLAIR LONGMIRE L296

REG: \*20833618 | DOB: 03/06/23 | TATTOO: L296

S A V Renown 3439#  
**Reisig Longmire 8326** 19448009  
 BUF Eriskay 7417

Rito 707 of Ideal 3407 7075  
 S A V Blackcap May 4136  
 N Bar Emulation EXT#  
 J Bar 7 Eriskay Q13-71K1#  
 Rito Revolve OR5  
 Sinclair Primrose 6X40 A14  
 BT Right Time 24J#  
 N Bar Primrose Y3051#

Sinclair Rito 3R16  
**Sinclair Primrose 6RA9 OBT2** 18487743  
 Sinclair Primrose OBT2 A14

Individual Performance					EPD's				
BW	ADJ. WW	WR	ADJ. YW	YR	CED	BW	WW	MILK	YW
86	609	108	1028	103	5	0.3	42	21	72
Individual Performance					Mat				
ADG	Act. IMF	REA/100 lbs	SEN	\$M	\$W	\$F	\$G	\$B	
2.74	3.13	1.16	6	60	39	40	25	65	

**Dam's Production** WR: 6 @ 102 YR: 3 @ 98

Grandam 12-103 BR, 10-100 WR, 9-104 YR



N Bar Miss Emulous A404, "D80", the Foundation Sinclair Miss Emulous Donor and the Great Grandam of lot 69.



N Bar Primrose Y3051 (A14), the Dam of Sinclair Emulation XXP, and the Great Grandam of Lot 68.



CONVENIENCE BUYING  
**Online Bids**  
 DV Auction & Cattle USA  
 See inside back cover for  
 details





70



**70 SINCLAIR EVOLVER L460**  
REG: \*20873379 | DOB: 03/06/23 | TATTOO: L460

Papa Forte 1921#  
**Loyning Evolver 73** 18948676  
HBR Shoshone Ester 7133

Sinclair X-Changer 2FE9  
**LJ K Bty 5FV0 5P65** 18362482  
Sinclair K Bty 5P65 2524

Papa Optima 9818  
Papa Envious Blackbird 8832  
Horse Butte 1126 of 3128  
Shoshone Ester 3131

Sinclair Emulation 5522 XP#  
Sinclair Blackie 7V3 2P18  
N Bar Prime Time D806#  
N Bar Kinochtry Bty SCC 2524

Individual Performance					EPD's				
BW	ADJ. WW	WR	ADJ. YW	YR	CED	BW	WW	MILK	YW
83	564	100	1007	100	5	1.1	32	20	56
Individual Performance					Mat				
ADG	Act. IMF	REA/100 lbs	\$EN	\$M	\$W	\$F	\$G	\$B	
2.42	3.15	1.02	20	54	33	67	26	93	

**Dam's Production** WR: 4 @ 96 YR: 2 @ 99

Wide based bull with plenty of visual muscle in this low birth sire that comes from a solid cow family.



**71 SINCLAIR EXECUTIVE L346**  
REG: \*20872807 | DOB: 03/09/23 | TATTOO: L346

Sinclair Black Iron 7UR26  
**Sinclair Executive 9UF3** 19472545  
Sinclair Lady Ida 8XV12 C52#

Sinclair Executive 9XV2  
**Sinclair Blkbird 5U15 3006** 18154153  
Sinclair Blkbird 3006 OXM1#

Sinclair Exactly 4U2  
Sinclair Erica 2FE2 8BT12  
N Bar Emulation Ext V722  
N Bar Lady Ida Z1453

N Bar Emulation Ext V722  
N Bar Primrose Y3051#  
Basin Rainmaker 914A  
Sinclair Blkbird OXM1 8XV8

Individual Performance					EPD's				
BW	ADJ. WW	WR	ADJ. YW	YR	CED	BW	WW	MILK	YW
100	593	105	1051	106	1	1.2	43	21	76
Individual Performance					Mat				
ADG	Act. IMF	REA/100 lbs	\$EN	\$M	\$W	\$F	\$G	\$B	
4.52	2.67	1.07	16	77	38	52	31	84	

**Dam's Production** WR: 7 @ 102 YR: 5 @ 101

Growth bull here that combines 2 cows that a person is lucky to enjoy as a rancher, 8XV12 and A14 are/were Golden Girls, and we are lucky to be able to pass these genetics on to you!



Sinclair Executive 9XV2, the Maternal Grand sire of Lot 71.



**72 SINCLAIR EXECUTIVE L88**  
REG: \*20833613 | DOB: 03/07/23 | TATTOO: L88

Sinclair Black Iron 7UR26  
**Sinclair Executive 9UF3** 19472545  
Sinclair Lady Ida 8XV12 C52#

Emulation 31#  
**Sinclair K Bty 3A23 1BA18** 17526794  
Sinclair K Bty 1BA18 7FE6

Sinclair Exactly 4U2  
Sinclair Erica 2FE2 8BT12  
N Bar Emulation Ext V722  
N Bar Lady Ida Z1453  
F C R Elation Lad 652  
Miss Emulous 243  
Sinclair IN Time 6BT39  
Sinclair K Bty 7FE6 2G26

Individual Performance					EPD's				
BW	ADJ. WW	WR	ADJ. YW	YR	CED	BW	WW	MILK	YW
79	579	103	997	100	8	-2.3	35	21	56
Individual Performance					Mat				
ADG	Act. IMF	REA/100 lbs	\$EN	\$M	\$W	\$F	\$G	\$B	
2.74	3.6	1.08	21	75	39	33	33	67	

**Dam's Production** WR: 9 @ 98 YR: 4 @ 101

Calving ease bull from a mild mannered nicely shaped Emulation 31 daughter.



**73 SINCLAIR EXECUTIVE L77**  
REG: \*20833612 | DOB: 03/06/23 | TATTOO: L77

Sinclair Black Iron 7UR26  
**Sinclair Executive 9UF3** 19472545  
Sinclair Lady Ida 8XV12 C52#

N Bar Emulation Ext V722  
**Sinclair Enchantress 3XV1** 17578696  
N Bar Enchantress S C C 2F8

Sinclair Exactly 4U2  
Sinclair Erica 2FE2 8BT12  
N Bar Emulation Ext V722  
N Bar Lady Ida Z1453  
N Bar Emulation EXT#  
N Bar Blackbird 4307#  
Emulation N Bar 5522#  
N Bar Enchantress X4126

Individual Performance					EPD's				
BW	ADJ. WW	WR	ADJ. YW	YR	CED	BW	WW	MILK	YW
81	535	95	943	95	5	-1.0	39	21	62
Individual Performance					Mat				
ADG	Act. IMF	REA/100 lbs	\$EN	\$M	\$W	\$F	\$G	\$B	
3.23	3.66	1.30	19	67	42	32	35	67	

**Dam's Production** WR: 9 @ 98 YR: 6 @ 102

Well, we have done it again combining good solid cows in this bull, his dam is the trouble free enjoyable type. Remember, if you can't make the sale in person, use our absentee buyer options.



**74 SINCLAIR ECLIPSE L601**  
REG: \*20833637 | DOB: 02/17/23 | TATTOO: L601

N Bar Emulation EXT#  
**Sinclair Eclipse 9X17** 19602966  
N Bar Enchantress WP F3619

Sinclair Rito 4RX7  
**Sinclair C Pride J696 7WC10** 20300833  
Sinclair C Pride 7WC10 4VB17

Emulation N Bar 5522#  
N Bar Primrose 2424  
N Bar Shadow X4124  
N Bar Enchantress A1376  
Sinclair Rito 2R1  
Sinclair Lady Ida 1XX9 3S41  
Sinclair Dynasty 3WCD7  
Sinclair C Pride 4VB17 1TL21

Individual Performance					EPD's				
BW	ADJ. WW	WR	ADJ. YW	YR	CED	BW	WW	MILK	YW
74	596	106	932	97	4	-0.1	42	22	62
Individual Performance					Mat				
ADG	Act. IMF	REA/100 lbs	\$EN	\$M	\$W	\$F	\$G	\$B	
2.74	2.63	1.05	17	79	44	42	22	63	

**Dam's Production** WR: 1 @ 106 YR: 1 @ 97

Low birth sire from a young cow, his maternal great Grandam had a good disposition. Come check out lot 74 and see his agreeable temperament.



**75 SINCLAIR ECLIPSE L622**  
REG: 20863955 | DOB: 02/20/23 | TATTOO: L622

N Bar Emulation EXT#  
**Sinclair Eclipse 9X17** 19602966  
N Bar Enchantress WP F3619

KG Justified 3023#  
**Sinclair Lady J555 9PR3** 20285989  
Sinclair Lady 9PR3 4A4

Emulation N Bar 5522#  
N Bar Primrose 2424  
N Bar Shadow X4124  
N Bar Enchantress A1376  
Connealy Judgment  
KG Miss Magic 1443  
Sinclair Promise 6RE2  
Sinclair Lady 4A4 2G21#

Individual Performance					EPD's				
BW	ADJ. WW	WR	ADJ. YW	YR	CED	BW	WW	MILK	YW
70	626	100	919	100	5	-1.8	40	26	63
Individual Performance					Mat				
ADG	Act. IMF	REA/100 lbs	\$EN	\$M	\$W	\$F	\$G	\$B	
2.26	3.11	1.24	15	79	47	54			

**Dam's Production** WR: 1 @ 100 YR: 1 @ 100

Calving ease bull that knows how to put on the pounds.

**76 SINCLAIR ECLIPSE L641**  
 REG: **20854145** | DOB: **02/24/23** | TATTOO: **L641**

N Bar Emulation EXT#  
**Sinclair Eclipse 9X17** 19602966  
 N Bar Enchantress WP F3619

Reisig Longmire 8326  
**Sinclair Ms Emulous J33** 20267253  
 Sinclair Ms Emulous 3TL26

Emulation N Bar 5522#  
 N Bar Primrose 2424  
 N Bar Shadow X4124  
 N Bar Enchantress A1376  
 S A V Renown 3439#  
 BUF Eriskay 7417  
 Sinclair Timeless 8BA4#  
 Sinclair Ms Emulous 1TX2

Individual Performance					EPD's				
BW	ADJ. WW	WR	ADJ. YW	YR	CED	BW	WW	MILK	YW
76	572	100	946	100	7	-1.5	34	24	59
Individual Performance					\$ Values				
ADG	Act. IMF	REA/100 lbs	SEN	\$M	\$W	\$F	\$G	\$B	
3.55	3.4	1.21	13	71	38	56			

**Dam's Production WR: 1 @ 100 YR: 1 @ 100**

Another good low birth bull from Eclipse. This bull combines long time customer favorites EXT, Shadow and Timeless.

**77 SINCLAIR ECLIPSE L681**  
 REG: **\*20833647** | DOB: **03/15/23** | TATTOO: **L681**

N Bar Emulation EXT#  
**Sinclair Eclipse 9X17** 19602966  
 N Bar Enchantress WP F3619

Emulation N Bar 5522#  
 N Bar Primrose 2424  
 N Bar Shadow X4124  
 N Bar Enchantress A1376  
 Connealy Judgment  
 KG Miss Magic 1443  
 Sinclair IN Time 6BT39  
 Sinclair Blkbird 7U38 9BA9

KG Justified 3023#  
**Sinclair Blkbird J527 9BA5** 20281668  
 Sinclair Blkbird 9BA5 7U38

Individual Performance					EPD's				
BW	ADJ. WW	WR	ADJ. YW	YR	CED	BW	WW	MILK	YW
64	664	118	981	102	12	-4.0	42	28	62
Individual Performance					\$ Values				
ADG	Act. IMF	REA/100 lbs	SEN	\$M	\$W	\$F	\$G	\$B	
2.90	2.87	1.13	13	82	53	42	33	75	

**Dam's Production WR: 1 @ 118 YR: 1 @ 102**

Got heifers? Buy this bull and his calves will be born with the correct size and shape, his calves will hit the ground running and a growing,

**78 SINCLAIR ECLIPSE L568**  
 REG: **\*20872259** | DOB: **02/14/23** | TATTOO: **L568**

N Bar Emulation EXT#  
**Sinclair Eclipse 9X17** 19602966  
 N Bar Enchantress WP F3619

Emulation N Bar 5522#  
 N Bar Primrose 2424  
 N Bar Shadow X4124  
 N Bar Enchantress A1376  
 Emulation 31#  
 Ankony 8F78 Lass 8F275  
 Loyning Equinox 7  
 Sinclair Blkbird 3XX5 9A9

Emulation N Bar 5522#  
**Sinclair Blkbird J509 9EQ3** 20300911  
 Sinclair Blkbird 9EQ3 3XX5

Individual Performance					EPD's				
BW	ADJ. WW	WR	ADJ. YW	YR	CED	BW	WW	MILK	YW
64	581	99	952	93	11	-3.5	33	23	49
Individual Performance					\$ Values				
ADG	Act. IMF	REA/100 lbs	SEN	\$M	\$W	\$F	\$G	\$B	
2.10	2.74	1.15	18	76	41	41	21	62	

**Dam's Production WR: 1 @ 99 YR: 1 @ 93**

Sure shot heifer bull that has the right pedigree to keep the daughters and be Happy. EXT, 5522, Shadow, Equinox, this is a good combination of genetics for the long haul.



Emulation N Bar 5522, the Highly Regarded Calving Ease and Female Maker that is the Maternal Grand sire of Lot 78.

**79 SINCLAIR ECLIPSE L556**  
 REG: **\*20833630** | DOB: **02/12/23** | TATTOO: **L556**

N Bar Emulation EXT#  
**Sinclair Eclipse 9X17** 19602966  
 N Bar Enchantress WP F3619

Connealy Spur#  
**Sinclair Lady Ida J23** 20126918  
 Sinclair Lady Ida 2X3 6PV1

Emulation N Bar 5522#  
 N Bar Primrose 2424  
 N Bar Shadow X4124  
 N Bar Enchantress A1376  
 Connealy Stimulus 8419#  
 Jazza of Conanga 8594#  
 N Bar Emulation EXT#  
 Sinclair Lady Ida 6PV1 04F3#

Individual Performance					EPD's				
BW	ADJ. WW	WR	ADJ. YW	YR	CED	BW	WW	MILK	YW
86	548	97	929	96	-2	1.7	43	24	70
Individual Performance					\$ Values				
ADG	Act. IMF	REA/100 lbs	SEN	\$M	\$W	\$F	\$G	\$B	
2.42	4.14	1.14	15	75	42	55	41	96	

**Dam's Production WR: 1 @ 97 YR: 1 @ 96**

Eclipse son from a strong cow family that combined growth and fertility.



Sinclair Eclipse 9X17, Sire of Lots 74, 75, 76, 77, 78 & 79 is an Example of Timeless Emulation Genetics backed by a Fertile Cow Family.

**80 SINCLAIR EXPRESS L174**  
 REG: **\*20833581** | DOB: **04/10/23** | TATTOO: **L174**

N Bar Emulation Ext A1747  
**Sinclair Express 8V30** 19380704  
 Sinclair C Pride 8BA10 3P37

N Bar Emulation EXT#  
 N Bar Clova Pride U3031  
 Sinclair IN Time 6BT39  
 Sinclair C Pride 3P37 J204  
 Sinclair X-Changer 2FE9  
 Sinclair Ms Emulous 8F12  
 Sinclair Emulation OF4  
 Sinclair Eriskay 2Z2 5E3

Sinclair Piney Creek 5FV5  
**Sinclair Eriskay 9FF39 6FX10** 19521264  
 Sinclair Eriskay 6FX10 2Z2

Individual Performance					EPD's				
BW	ADJ. WW	WR	ADJ. YW	YR	CED	BW	WW	MILK	YW
79	571	101			5	0.2	39	22	64
Individual Performance					\$ Values				
ADG	Act. IMF	REA/100 lbs	SEN	\$M	\$W	\$F	\$G	\$B	
4.03	4.01	0.95	17	88	39	55			

**Dam's Production WR: 2 @ 102 YR: @**

Remember we have DVAuction to use for internet bidding.





Sinclair Dynasty 3WCD7, the Long-Time Sinclair Herdsire and Grandsire of Lot 81.



**83 SINCLAIR EXQUISITE L137**  
REG: \*20872785 | DOB: 03/17/23 | TATTOO: L137

N Bar Emulation EXT#  
**Sinclair Exquisite 9X15** 19602928  
Rito Majesty 5A61 of F0203

Sinclair Piney Creek 6FV16  
**Sinclair Primrose 0FL14** 19981783  
Sinclair Primrose 8WC34 2D5

Emulation N Bar 5522#  
N Bar Primrose 2424  
PBC 707 1M F0203#  
B A F Excel Lady 2104

Sinclair X-Changer 2FE9  
Sinclair K Bty 2X7 6MB8#  
Sinclair Dynasty 3WCD7  
Sinclair Primrose 2D5 9XT5#

Individual Performance					EPD's				
BW	ADJ. WW	WR	ADJ. YW	YR	CED	BW	WW	MILK	YW
73	588	104	975	98	10	-1.2	40	23	64
Individual Performance					EPD's				
ADG	Act. IMF	REA/100 lbs	\$EN	\$M	\$W	\$F	\$G	\$B	
2.26	3.15	1.18	17	74	43	55			

**Dam's Production** WR: 2 @ 103 YR: 1 @ 98

Lots to like in this sure shot heifer bull, the 6FV16 daughters are wonderful as are the 9X15's, good combo here for you.



**81 SINCLAIR DYNASTY L397**  
REG: \*20833601 | DOB: 03/16/23 | TATTOO: L397

Sinclair Dynasty 3WCD7  
**Sinclair Dynasty 7WC17** 18826235  
Sinclair Primrose 1G13 6E11#

Wandering CRK Dynasty JRM 2F#  
Sinclair Eriskay 2N1 7883#  
Sinclair Grass Master#  
Sinclair Primrose 6E11 Z194

Sinclair Emulation XXP#  
**Sinclair Blackcap 8XX12** 19169718  
Sinclair Blackcap 5WCD3

N Bar Emulation EXT#  
N Bar Primrose Y3051#  
Wandering CRK Dynasty JRM 2F#  
Sinclair Blackcap 0R107 5PV51

Individual Performance					EPD's				
BW	ADJ. WW	WR	ADJ. YW	YR	CED	BW	WW	MILK	YW
92	592	105	1002	101	6	0.4	44	25	73
Individual Performance					EPD's				
ADG	Act. IMF	REA/100 lbs	\$EN	\$M	\$W	\$F	\$G	\$B	
3.06	3.11	1.07	5	53	46	42	26	68	

**Dam's Production** WR: 4 @ 101 YR: 2 @ 100

Here is a bull that has some grow, backed by generations of cow man's performance.



Sinclair Emulation XXP, the Maternal Grandsire of Lot 81.



**84 SINCLAIR EXQUISITE L119**  
REG: \*20833573 | DOB: 03/11/23 | TATTOO: L119

N Bar Emulation EXT#  
**Sinclair Exquisite 9X15** 19602928  
Rito Majesty 5A61 of F0203

Emulation N Bar 5522#  
N Bar Primrose 2424  
PBC 707 1M F0203#  
B A F Excel Lady 2104

Wandering CRK Dynasty JRM 2F#  
Sinclair Eriskay 2N1 7883#  
Sinclair Preview 2TL6  
Sinclair Ms Emulous 2G18#

Individual Performance					EPD's				
BW	ADJ. WW	WR	ADJ. YW	YR	CED	BW	WW	MILK	YW
80	576	102	970	97	6	0.6	41	20	62
Individual Performance					EPD's				
ADG	Act. IMF	REA/100 lbs	\$EN	\$M	\$W	\$F	\$G	\$B	
3.39	4.24	1.27	20	73	40	47	34	81	

**Dam's Production** WR: 2 @ 98 YR: 1 @ 97

Moderate birth weight bull that has muscle.



85



**82 SINCLAIR EXQUISITE L348**  
REG: \*20833620 | DOB: 03/09/23 | TATTOO: L348

N Bar Emulation EXT#  
**Sinclair Exquisite 9X6** 19477703  
Sinclair K Bty 9P31 V149#

Emulation N Bar 5522#  
N Bar Primrose 2424  
N Bar Prime Time D806#  
N Bar Kinochtry Beauty 4317#

Sinclair Rollin Coal 5K2  
**Sinclair K Bty 9KF1 3TL42** 19475098  
Sinclair K Bty 3TL42 1XX17

Sinclair Broker 3RC33  
Sinclair Ms Emulous 1FE23  
Sinclair Timeless 8BA4#  
Sinclair K Bty 1XX17 7V53

Individual Performance					EPD's				
BW	ADJ. WW	WR	ADJ. YW	YR	CED	BW	WW	MILK	YW
73	550	98	969	98	14	-4.7	33	28	59
Individual Performance					EPD's				
ADG	Act. IMF	REA/100 lbs	\$EN	\$M	\$W	\$F	\$G	\$B	
2.26	3.91	1.06	14	71	41	56	33	88	

**Dam's Production** WR: 2 @ 97 YR: 1 @ 98

Calving ease bull from a cow family that is easy fleshing and growth. The 5K2 daughters are exquisite.



**85 SINCLAIR GRASS MASTER L53**  
REG: \*20833607 | DOB: 03/03/23 | TATTOO: L53

BT Right Time 24J#  
**Sinclair Grass Master** 16027094#  
N Bar Primrose Y3051#

Leachman Right Time#  
Sitz Everelda Entense 1905  
N Bar Emulation EXT#  
N Bar Primrose 2429#

N Bar Emulation 5522 4245A  
**Sinclair Lady 4FC3 2TL3** 17746195  
Sinclair Lady 2TL3 0X4

Emulation N Bar 5522#  
Coffey Enchantress 424  
Sinclair Timeless 8BA4#  
Sinclair Lady 0X4 3M19

Individual Performance					EPD's				
BW	ADJ. WW	WR	ADJ. YW	YR	CED	BW	WW	MILK	YW
89	592	105	995	100	2	1.0	42	30	74
Individual Performance					EPD's				
ADG	Act. IMF	REA/100 lbs	\$EN	\$M	\$W	\$F	\$G	\$B	
3.55	2.82	1.14	-4	41	45	54	28	82	

**Dam's Production** WR: 7 @ 107 YR: 3 @ 100

Do you need to level up the udder floor on your cows? Well consider this bull, level udders run in the cow family.



# SINCLAIR IN TIME L275

REG: \*20833587 | DOB: 03/03/23 | TATTOO: L275

BT Right Time 24J#  
**Sinclair IN Time 6BT39** 15366581  
N Bar Miss Emulous A404

Sinclair X-Changer 2FE9  
**Sinclair Primrose 7FV7 2TL29** 18829758  
Sinclair Primrose 2TL29 9X99

Leachman Right Time#  
Sitz Everelda Entense 1905  
N Bar Emulation Ext Z52  
N Bar Miss Emulous X3091#  
Sinclair Emulation 5522 XP#  
Sinclair Blackie 7V3 2P18  
Sinclair Timeless 8BA4#  
Sinclair Primrose XXX 9X99

Individual Performance					EPD's				
BW	ADJ. WW	WR	ADJ. YW	YR	CED	BW	WW	MILK	YW
77	592	105	989	99	12	-2.9	33	26	58
Individual Performance					Mat	\$ Values			
ADG	Act. IMF	REA/100 lbs	SEN	\$M	\$W	\$F	\$G	\$B	
3.55	3.51	1.04	16	72	40	25	22	47	

**Dam's Production** WR: 4 @ 102 YR: 2 @ 97

Big time calving ease bull that comes from a pedigree full of productive thrifty animals.



# SINCLAIR IN TIME L592

REG: 20833635 | DOB: 02/16/23 | TATTOO: L592

BT Right Time 24J#  
**Sinclair IN Time 6BT39** 15366581  
N Bar Miss Emulous A404

Leachman Right Time#  
Sitz Everelda Entense 1905  
N Bar Emulation Ext Z52  
N Bar Miss Emulous X3091#  
Connealy Judgment  
KG Miss Magic 1443  
Sinclair Dynasty 3WCD7  
Sinclair K Bty 3TL9 2X39

KG Justified 3023#  
**Sinclair K Bty J548 9WC2** 20285983  
Sinclair K Bty 9WC2 3TL9

Individual Performance					EPD's				
BW	ADJ. WW	WR	ADJ. YW	YR	CED	BW	WW	MILK	YW
72	585	104	983	102	12	-2.6	40	28	70
Individual Performance					Mat	\$ Values			
ADG	Act. IMF	REA/100 lbs	SEN	\$M	\$W	\$F	\$G	\$B	
3.55	2.88	1.19	12	77	47	47	35	82	

**Dam's Production** WR: 1 @ 104 YR: 1 @ 102

Calving ease bull with muscle out of a productive dam.



# SINCLAIR IN TIME L266

REG: \*20833616 | DOB: 03/01/23 | TATTOO: L266

BT Right Time 24J#  
**Sinclair IN Time 6BT39** 15366581  
N Bar Miss Emulous A404

Leachman Right Time#  
Sitz Everelda Entense 1905  
N Bar Emulation Ext Z52  
N Bar Miss Emulous X3091#  
Rito Revolve OR5  
N Bar Miss Emulous A404  
Sinclair Emulation 5522 XP#  
Octoraro Delia 404

Sinclair Rito 2R1  
**Sinclair Delia 4RX2 1FE18** 17830574  
Sinclair Delia 1FE18 404

Individual Performance					EPD's				
BW	ADJ. WW	WR	ADJ. YW	YR	CED	BW	WW	MILK	YW
78	562	100	997	100	13	-3.3	35	23	55
Individual Performance					Mat	\$ Values			
ADG	Act. IMF	REA/100 lbs	SEN	\$M	\$W	\$F	\$G	\$B	
3.23	3.4	1.14	19	72	41	28	30	58	

**Dam's Production** WR: 8 @ 97 YR: 5 @ 97

Calving Ease bull from the sought after Delia cow family.



# SINCLAIR IN TIME L582

REG: \*20833633 | DOB: 02/15/23 | TATTOO: L582

BT Right Time 24J#  
**Sinclair IN Time 6BT39** 15366581  
N Bar Miss Emulous A404

Leachman Right Time#  
Sitz Everelda Entense 1905  
N Bar Emulation Ext Z52  
N Bar Miss Emulous X3091#  
Connealy Judgment  
KG Miss Magic 1443  
Sinclair Exactly 4U2  
Sinclair Blackbird 1FC1 5P41

KG Justified 3023#  
**Sinclair Blackbird J545 9UR13** 20285980  
Sinclair Black Iron 9UR13

Individual Performance					EPD's				
BW	ADJ. WW	WR	ADJ. YW	YR	CED	BW	WW	MILK	YW
70	588	104	959	100	11	-2.3	39	28	67
Individual Performance					Mat	\$ Values			
ADG	Act. IMF	REA/100 lbs	SEN	\$M	\$W	\$F	\$G	\$B	
3.06	4.09	1.10	14	78	46	42	41	83	

**Dam's Production** WR: 1 @ 104 YR: 1 @ 100

Calving ease bull that will sire calves with thickness and eye appeal.



# REF SIRE SINCLAIR IN TIME 6BT39

REG: +15366581 | DOB: 02/06/06 | TATTOO: 6BT39

Leachman Right Time#  
**BT Right Time 24J** 13360311#  
Sitz Everelda Entense 1905

N Bar Emulation EXT#  
Leachman Erica 0025  
Traveler 124 G D A R#  
Sitz Everelda Entense 1791#

N Bar Emulation Ext Z52  
**N Bar Miss Emulous A404** 12128785  
N Bar Miss Emulous X3091#

N Bar Emulation EXT#  
N Bar Clova Pride X4170  
N Bar Emulation EXT#  
N Bar Miss Emulous 4709

CED	BW	WW	YW	SC	MILK	DOC	MARB	REA	\$M	\$W	\$F	\$B	\$C
16	-5.3	24	41	-12	30	16	.53	-.05	54	39	47	81	159

Get a live calf on the ground with In Time's proven calving ease. Productive long lived bull that makes daughters that get the job done! Proudly owned with Deb Reichman, Wm & Cheryl Fairbairn



**90 SINCLAIR IN TIME L293**  
REG: \*20872796 | DOB: 03/05/23 | TATTOO: L293

BT Right Time 24J#  
**Sinclair IN Time 6BT39** 15366581  
N Bar Miss Emulous A404

Sitz Traveler 043#  
**Sinclair Pride 6TS1 2188#** 18506685  
Sitz Pride 2188

Leachman Right Time#  
Sitz Everelda Entense 1905  
N Bar Emulation Ext Z52  
N Bar Miss Emulous X3091#  
Traveler 124 G D A R#  
Sitz Everelda Entense 1137  
N Bar Emulation EXT#  
Sitz Pride 838#

Individual Performance					EPD's				
BW	ADJ. WW	WR	ADJ. YW	YR	CED	BW	WW	MILK	YW
81	570	101	912	92	10	-1.9	29	30	48
Individual Performance					\$ Values				
ADG	Act. IMF	REA/100 lbs	SEN	\$M	\$W	\$F	\$G	\$B	
2.10	4.06	1.11	14	59	40	32	29	61	

**Dam's Production** WR: 6 @ 106 YR: 5 @ 103

Another calving ease bull from that stems from the Donor cow 2188.



Sitz Pride 2188, the Foundation Grandam of Lot 90.

**92 SINCLAIR SUN DIAL L286**  
REG: \*20833589 | DOB: 03/05/23 | TATTOO: L286

Sinclair Timeless 8BA4#  
**Sinclair Sun Dial 4TL2** 17746179  
Sinclair K Bty 2X7 6MB8#

Sinclair X-Changer 5FE15  
**Sinclair Primrose 8EE13** 19168745  
Sinclair Primrose 6SX27 9P26

Sinclair IN Time 6BT39  
Sinclair Blackbird 2P8 7079#  
Sinclair Timeless 8BA4#  
Sinclair K Bty 6MB8 B345  
Sinclair Emulation 5522 XP#  
Sinclair M Emulous 4ET1 D47#  
Sinclair Vision 35X12  
Sinclair Primrose 9P26 Z194

Individual Performance					EPD's				
BW	ADJ. WW	WR	ADJ. YW	YR	CED	BW	WW	MILK	YW
77	543	96	954	96	15	-4.6	28	31	56
Individual Performance					\$ Values				
ADG	Act. IMF	REA/100 lbs	SEN	\$M	\$W	\$F	\$G	\$B	
2.26	2.59	1.01	13	63	38	35	24	59	

**Dam's Production** WR: 4 @ 100 YR: 1 @ 96

Calving ease bull that will sire calves that come easy and are vigorous at birth.



Sinclair K Bty 2X7 6MB8 Proven Herdsire Matron Thoughtfully Woven into bulls.

**91 SINCLAIR SUN DIAL L73**  
REG: \*20872823 | DOB: 03/06/23 | TATTOO: L73

Sinclair Timeless 8BA4#  
**Sinclair Sun Dial 4TL2** 17746179  
Sinclair K Bty 2X7 6MB8#

Sinclair Emulation OF4  
**Sinclair Primrose 3FX71** 17729199  
Sinclair Primrose 1UX15#

Sinclair IN Time 6BT39  
Sinclair Blackbird 2P8 7079#  
Sinclair Timeless 8BA4#  
Sinclair K Bty 6MB8 B345  
Emulation N Bar 5522#  
N Bar Kinochtry Bty SCC 2V3#  
Sinclair United X 8X21  
Sinclair Primrose 8PV34 03F3

Individual Performance					EPD's				
BW	ADJ. WW	WR	ADJ. YW	YR	CED	BW	WW	MILK	YW
83	605	107	1056	106	12	-2.7	39	30	74
Individual Performance					\$ Values				
ADG	Act. IMF	REA/100 lbs	SEN	\$M	\$W	\$F	\$G	\$B	
3.23	2.3	1.20	4	50	46	58	26	84	

**Dam's Production** WR: 9 @ 98 YR: 5 @ 97

The 4TL2 progeny have sweet temperaments just like the old bull himself, not only are they well behaved, but do a number of things right.

**93 SINCLAIR SUN DIAL L298**  
REG: \*20833591 | DOB: 03/06/23 | TATTOO: L298

Sinclair Timeless 8BA4#  
**Sinclair Sun Dial 4TL2** 17746179  
Sinclair K Bty 2X7 6MB8#

Sinclair Line-XX 2H1  
**Sinclair Enchantress 8HX7** 19289342  
Sinclair Enchantress 5TL26

Sinclair IN Time 6BT39  
Sinclair Blackbird 2P8 7079#  
Sinclair Timeless 8BA4#  
Sinclair K Bty 6MB8 B345  
Sinclair Line X 8XV6  
Sinclair Primrose 9IT13 5R47  
Sinclair Timeless 8BA4#  
Sinclair Enchantress 3R13

Individual Performance					EPD's				
BW	ADJ. WW	WR	ADJ. YW	YR	CED	BW	WW	MILK	YW
64	550	98	942	95	18	-6.2	24	34	50
Individual Performance					\$ Values				
ADG	Act. IMF	REA/100 lbs	SEN	\$M	\$W	\$F	\$G	\$B	
2.42	2.63	1.11	11	61	36	39	24	63	

**Dam's Production** WR: 4 @ 100 YR: 2 @ 99

Easiest of easy calving bull here with other benefits such as good feet and disposition.

**REF SIRE SINCLAIR SUN DIAL 4TL2**  
REG: 17746179 | DOB: 02/01/14 | TATTOO: 4TL2

Sinclair IN Time 6BT39  
**Sinclair Timeless 8BA4** 16027579#  
Sinclair Blackbird 2P8 7079#

Sinclair Timeless 8BA4#  
**Sinclair K Bty 2X7 6MB8#** 17199714  
Sinclair K Bty 6MB8 B345

BT Right Time 24J#  
N Bar Miss Emulous A404  
N Bar Prime Time D806#  
Rito 707 of Ideal 089 7076  
Sinclair IN Time 6BT39  
Sinclair Blackbird 2P8 7079#  
N Bar Musketeer 2M13  
N Bar Kinochtry Bty B345

CED	BW	WW	YW	SC	MILK	DOC	MARB	REA	\$M	\$W	\$F	\$B	\$C
18	-6.4	28	63	.95	38	5	.40	-.03	38	42	69	95	161

4TL2's offspring exhibit enhanced temperament and maternal instincts. His progeny have an average birthweight ratio of 91 and a yearling ratio of 101, showcasing reliable calving ease and growth. His daughters are smooth-coated, moderately sized, and exhibit excellent mothering abilities, with a sustainable nursing ratio of 103. This bull reliably imparts multiple desirable traits, thanks to his distinct pedigree.





## SINCLAIR TIMELESS L369

REG: \*20863953 | DOB: 03/11/23 | TATTOO: L369

Sinclair IN Time 6BT39  
**Sinclair Timeless 8BA4** 16027579#  
 Sinclair Blackbird 2P8 7079#

BT Right Time 24J#  
 N Bar Miss Emulous A404  
 N Bar Prime Time D806#  
 Rito 707 of Ideal 089 7076  
 Sinclair Emulation 5522 XP#  
 Sinclair Blackie 7V3 2P18  
 O C C Emblazon 854E#  
 N Bar Enchantress WP F3619

Sinclair X-Changer 2FE9  
**Sinclair Enchantress WP 8FV4** 19279880  
 Sinclair Enchantress WP 4OE1#

Individual Performance					EPD's				
BW	ADJ. WW	WR	ADJ. YW	YR	CED	BW	WW	MILK	YW
87	522	100	978	100	9	-0.8	35	26	67
Individual Performance					EPD's				
ADG	Act. IMF	REA/100 lbs	SEN	\$M	\$W	\$F	\$G	\$B	
3.71	2.45	1.08	13	49	37	60			

**Dam's Production** WR: 2 @ 101 YR: 1 @ 100

More calving ease here than you would think at a quick glance. Wide based and easy fleshing are the norm in this bulls background.



## SINCLAIR TIMELESS L64

REG: \*20872821 | DOB: 03/05/23 | TATTOO: L64

Sinclair IN Time 6BT39  
**Sinclair Timeless 8BA4** 16027579#  
 Sinclair Blackbird 2P8 7079#

N Bar Emulation 5522 4245A  
**Sinclair Blackbird 1FC1 5P41** 16850906  
 Sinclair Blackbird 5P41 3403#

BT Right Time 24J#  
 N Bar Miss Emulous A404  
 N Bar Prime Time D806#  
 Rito 707 of Ideal 089 7076  
 Emulation N Bar 5522#  
 Coffey Enchantress 424  
 N Bar Prime Time D806#  
 Ideal 3403 of 1418 9383

Individual Performance					EPD's				
BW	ADJ. WW	WR	ADJ. YW	YR	CED	BW	WW	MILK	YW
87	554	98	1040	105	8	-0.9	29	30	71
Individual Performance					EPD's				
ADG	Act. IMF	REA/100 lbs	SEN	\$M	\$W	\$F	\$G	\$B	
3.23	2.65	1.03	-2	36	30	66	24	90	

**Dam's Production** WR: 10 @ 104 YR: 7 @ 107

Eye catching son of Timeless from a nicely patterned productive dam.



Sinclair Timeless 8BA4, the Sire of Lots 94, 95 & 96.



N Bar Enchantress WP F3619 (J380), the Powerful Great Grandam of Lot 96.



## SINCLAIR TIMELESS L549

REG: \*20833608 | DOB: 02/12/23 | TATTOO: L549

Sinclair IN Time 6BT39  
**Sinclair Timeless 8BA4** 16027579#  
 Sinclair Blackbird 2P8 7079#

Sinclair Entrepreneur 8R101  
**Sinclair Pride 9RC8 3XX92** 19602917  
 Sinclair Pride 3XX92 4V1

BT Right Time 24J#  
 N Bar Miss Emulous A404  
 N Bar Prime Time D806#  
 Rito 707 of Ideal 089 7076  
 R R Rito 707#  
 N Bar Kinochtry Beauty Z1925  
 Sinclair Emulation XXP#  
 Sinclair Pride 4V1 2025

Individual Performance					EPD's				
BW	ADJ. WW	WR	ADJ. YW	YR	CED	BW	WW	MILK	YW
82	554	98	1031	101	6	-0.7	39	25	77
Individual Performance					EPD's				
ADG	Act. IMF	REA/100 lbs	SEN	\$M	\$W	\$F	\$G	\$B	
3.06	3.52	0.97	3	57	38	66	29	95	

**Dam's Production** WR: 2 @ 104 YR: 1 @ 101

Solid bull from Timeless that will sire stout calves.



Sinclair Pride 4V1 2025, a High Seller at a Past Sinclair Female Sale and the Great Grandam of Lot 95.





### SINCLAIR GARY L566

REG: \*20837846 | DOB: 02/14/23 | TATTOO: L566

Connealy Niobrara 5451  
**Connealy Gary** 18869442  
 Hertha of Conanga 1639

Sinclair Shadow Rider 9S34  
**Sinclair Primrose 4SR3 1TL3** 17830661  
 Sinclair Primrose 1TL3 9XV1#

Connealy Confidence Plus#  
 Britha of Conanga 167  
 Connealy Consensus#  
 Herra of Conanga 4462  
 N Bar Shadow X4124  
 N Bar Primrose Y3051#  
 Sinclair Timeless 8BA4#  
 Sinclair Primrose 9XV1 A14

Individual Performance					EPD's				
BW	ADJ. WW	WR	ADJ. YW	YR	CED	BW	WW	MILK	YW
86	590	103	1051	102	5	0.2	60	21	105
Individual Performance				Mat	\$ Values				
ADG	Act. IMF	REA/100 lbs	\$EN	\$M	\$W	\$F	\$G	\$B	
3.06	3.83	0.91	-6	63	51	76	37	113	

**Dam's Production** WR: 7 @ 102 YR: 3 @ 105

Big bull that will add pounds, this bull stems from a cow family that is productive without being oversized.



### SINCLAIR GARY L390

REG: \*20875987 | DOB: 03/14/23 | TATTOO: L390

Connealy Niobrara 5451  
**Connealy Gary** 18869442  
 Hertha of Conanga 1639

Sinclair Dynasty 3WCD7  
**Sinclair Blkbird 7WC8 3006** 18826243  
 Sinclair Blkbird 3006 0XM1#

Connealy Confidence Plus#  
 Britha of Conanga 167  
 Connealy Consensus#  
 Herra of Conanga 4462  
 Wandering CRK Dynasty JRM 2F#  
 Sinclair Eriskay 2N1 7883#  
 Basin Rainmaker 914A  
 Sinclair Blkbird 0XM1 8XV8

Individual Performance					EPD's				
BW	ADJ. WW	WR	ADJ. YW	YR	CED	BW	WW	MILK	YW
87	637	113	1168	118	6	1.0	67	22	123
Individual Performance				Mat	\$ Values				
ADG	Act. IMF	REA/100 lbs	\$EN	\$M	\$W	\$F	\$G	\$B	
4.03	3.87	0.99	-21	57	53	86	37	123	

**Dam's Production** WR: 4 @ 101 YR: 3 @ 103

Pounds, pounds and pounds, this bull seems to know how to put them on!





### SINCLAIR GARY L388

REG: \*20837768 | DOB: 03/14/23 | TATTOO: L388

Connealy Niobrara 5451  
**Connealy Gary** 18869442  
 Hertha of Conanga 1639

Sinclair Emulation 4FX1  
**Sinclair Ms Emulous 7FT17#** 18805032  
 Sinclair Ms Emulous 5TL40

Connealy Confidence Plus#  
 Britha of Conanga 167  
 Connealy Consensus#  
 Herra of Conanga 4462  
 Sinclair Emulation OF4  
 Sinclair M Emulous 4ET1 D47#  
 Sinclair Timeless 8BA4#  
 Sinclair Ms Emulous 2ET2 D47

Individual Performance					EPD's				
BW	ADJ. WW	WR	ADJ. YW	YR	CED	BW	WW	MILK	YW
94	681	121	1159	117	4	1.1	69	25	127
Individual Performance					\$ Values				
ADG	Act. IMF	REA/100 lbs	Mat	SEN	\$M	\$W	\$F	\$G	\$B
3.71	2.78	1.18	-25	52	57	94	37	131	

**Dam's Production** WR: 5 @ 111 YR: 2 @ 117

Growth bull from a productive eye appealing cow. Sounds too good to be true? Well its not!



### SINCLAIR GARY L42

REG: \*20837769 | DOB: 03/01/23 | TATTOO: L42

Connealy Niobrara 5451  
**Connealy Gary** 18869442  
 Hertha of Conanga 1639

Sinclair Sun Dial 4TL2  
**Sinclair Primrose 6TT9 4XX16** 18506543  
 Sinclair Primrose 4XX16 9P26

Connealy Confidence Plus#  
 Britha of Conanga 167  
 Connealy Consensus#  
 Herra of Conanga 4462  
 Sinclair Timeless 8BA4#  
 Sinclair K Bty 2X7 6MB8#  
 Sinclair Emulation XXP#  
 Sinclair Primrose 9P26 Z194

Individual Performance					EPD's				
BW	ADJ. WW	WR	ADJ. YW	YR	CED	BW	WW	MILK	YW
89	609	108	1134	114	6	0.0	58	23	116
Individual Performance					\$ Values				
ADG	Act. IMF	REA/100 lbs	Mat	SEN	\$M	\$W	\$F	\$G	\$B
3.71	3.16	1.10	-21	50	46	98	42	139	

**Dam's Production** WR: 6 @ 102 YR: 3 @ 102

Another bull with some grow from Gary, this bull comes from a sweetheart of a cow!





**101 SINCLAIR GARY L376**  
 REG: \*20872812 | DOB: 03/12/23 | TATTOO: L376

Connealy Niobrara 5451  
**Connealy Gary** 18869442  
 Hertha of Conanga 1639

O C C Great Plains 943G#  
**Sinclair Ms Emulous 50C14** 18155629  
 Sinclair Ms Emulous 3TL26

Connealy Confidence Plus#  
 Britha of Conanga 167  
 Connealy Consensus#  
 Herra of Conanga 4462

N Bar Emulation EXT#  
 Dixie Erica of C H 1019  
 Sinclair Timeless 8BA4#  
 Sinclair Ms Emulous 1TX2

Individual Performance					EPD's					
BW	ADJ. WW	WR	ADJ. YW	YR	CED	BW	WW	MILK	YW	
89	638	109	1241	100	2	2.2	62	23	120	
Individual Performance					\$ Values					
ADG	Act. IMF	REA/100 lbs	Mat		\$EN	\$M	\$W	\$F	\$G	\$B
3.23	3.12	1.00	-20		52	46	106	41	147	

**Dam's Production** WR: 5 @ 110 YR: 3 @ 108

Gary son with an adjusted yearling weight over 1200 pounds, this bull comes from a dam with ideal feet and udder.

**102 SINCLAIR GARY L263**  
 REG: \*20837796 | DOB: 02/26/23 | TATTOO: L263

Connealy Niobrara 5451  
**Connealy Gary** 18869442  
 Hertha of Conanga 1639

Sinclair Rito 2R1  
**Sinclair Donna 5RX14** 18365969  
 Sinclair Donna 6V1 2P33

Connealy Confidence Plus#  
 Britha of Conanga 167  
 Connealy Consensus#  
 Herra of Conanga 4462

Rito Revolve OR5  
 N Bar Miss Emulous A404  
 N Bar Emulation Ext A1747  
 Sinclair Donna 2P33 B715

Individual Performance					EPD's					
BW	ADJ. WW	WR	ADJ. YW	YR	CED	BW	WW	MILK	YW	
90	598	106	1049	105	3	1.7	60	18	107	
Individual Performance					\$ Values					
ADG	Act. IMF	REA/100 lbs	Mat		\$EN	\$M	\$W	\$F	\$G	\$B
3.87	3.9	1.06	-5		49	45	81	51	132	

**Dam's Production** WR: 7 @ 100 YR: 3 @ 98

This bull comes from an easy moving, easy fleshing cow, add Gary in there and the pounds come easy!



**REF SIRE CONNEALY GARY**  
 REG: 18869442 | DOB: 01/21/17 | TATTOO: 7293

Connealy Confidence Plus  
**Connealy Niobrara 5451** 18227124  
 Britha of Conanga 167

Connealy Consensus  
**Hertha of Conanga 1639** 17063920  
 Herra of Conanga 4462

Connealy Confidence 0100  
 Elbanna of Conanga 1209  
 Connealy Answer 7304  
 Bristy of Conanga 9283  
 KMK Alliance 6595 187  
 Blinda of Conanga 004  
 Connealy Danny 5398  
 Harrah of Conanga 578

CED	BW	WW	YW	SC	MILK	DOC	MARB	REA	\$M	\$W	\$F	\$B	SC
2	2.1	83	155	1.24	18	30	.67	.73	32	67	125	179	264

Connealy Gary was selected to enhance performance, muscle, docility, scrotal circumference and ribeye in the Sinclair females. We feel he has complimented the Sinclair gene pool very well. The sons are big, stout, heavy muscled bulls that will make a lot of friends sale day. His daughters are among the top of the replacement pen. Use Gary sons to give your herd a "boost" without sacrificing any given traits.



**SINCLAIR GARY L48**

REG: \*20837766 | DOB: 03/02/23 | TATTOO: L48

Connealy Niobrara 5451  
**Connealy Gary** 18869442  
 Hertha of Conanga 1639

Sinclair Dynasty 3WCD7  
**Sinclair Lady Ida 8WC35#** 19414728  
 Sinclair Lady Ida 5TA22 2G19

Connealy Confidence Plus#  
 Britha of Conanga 167  
 Connealy Consensus#  
 Herra of Conanga 4462  
 Wandering CRK Dynasty JRM 2F#  
 Sinclair Eriskay 2N1 7883#  
 Sinclair Preview 2TL6  
 Sinclair Lady Ida 2G19 7X10#



**SINCLAIR CATTLE  
 COMPANY, INC.**

Individual Performance					EPD's				
BW	ADJ. WW	WR	ADJ. YW	YR	CED	BW	WW	MILK	YW
97	663	118	1220	123	1	3.1	71	20	131
Individual Performance				Mat	\$ Values				
ADG	Act. IMF	REA/100 lbs		\$EN	\$M	\$W	\$F	\$G	\$B
3.06	3.56	1.09		-26	50	48	88	35	123

**Dam's Production WR: 4 @ 107 YR: 1 @ 123**

Thick bull that will sire calves that push down the scale.



**104 SINCLAIR IN TIME L24**  
REG: \*20872788 | DOB: 02/25/23 | TATTOO: L24

BT Right Time 24J#  
**Sinclair IN Time 6BT39** 15366581  
N Bar Miss Emulous A404

Sinclair Executive 9XV2  
**Sinclair Enchantress 6U7 853** 18496941  
Sinclair Enchantress 853#

Leachman Right Time#  
Sitz Everelda Entense 1905  
N Bar Emulation Ext Z52  
N Bar Miss Emulous X3091#  
N Bar Emulation Ext V722  
N Bar Primrose Y3051#  
N Bar Shadow X4124  
Sinclair Enchantress 6PV33

Individual Performance					EPD's				
BW	ADJ. WW	WR	ADJ. YW	YR	CED	BW	WW	MILK	YW
79	570	101	1015	102	13	-3.7	32	24	56
Individual Performance					Mat				
ADG	Act. IMF	REA/100 lbs	SEN	SM	SW	SF	SG	SB	
2.74	2.87	1.13	17	71	38	40	24	64	

**Dam's Production WR: 6 @ 94 YR: 3 @ 98**

Calving ease bull from a long line of productive cows that will leave you with calves with added pay weight.

**105 SINCLAIR IN TIME L284**  
REG: \*20833588 | DOB: 03/04/23 | TATTOO: L284

BT Right Time 24J#  
**Sinclair IN Time 6BT39** 15366581  
N Bar Miss Emulous A404

Sinclair Patriarch 3B47  
**Sinclair Queen 5B05 9V4** 18152047  
Sinclair Queen 9V4 12A3

Leachman Right Time#  
Sitz Everelda Entense 1905  
N Bar Emulation Ext Z52  
N Bar Miss Emulous X3091#  
Sinclair Boss#  
Sinclair Lady Ida 70C7 2V11  
N Bar Emulation Ext A1747  
Sinclair Queen M 12A3 1N15

Individual Performance					EPD's				
BW	ADJ. WW	WR	ADJ. YW	YR	CED	BW	WW	MILK	YW
66	579	103	1013	102	15	-4.6	33	24	56
Individual Performance					Mat				
ADG	Act. IMF	REA/100 lbs	SEN	SM	SW	SF	SG	SB	
3.06	4.03	1.00	17	74	39	41	37	78	

**Dam's Production WR: 7 @ 97 YR: 4 @ 98**

Super solid calving ease bull from a heck of a good cow that has a soft nurturing attentive way for her calves.



**106 SINCLAIR IN TIME L598**  
REG: \*20872819 | DOB: 02/17/23 | TATTOO: L598

BT Right Time 24J#  
**Sinclair IN Time 6BT39** 15366581  
N Bar Miss Emulous A404

Sinclair Practical 8QR8  
**Sinclair K BTY J636 9UE4** 20854146  
Sinclair K Bty 9UE4 8PV43#

Leachman Right Time#  
Sitz Everelda Entense 1905  
N Bar Emulation Ext Z52  
N Bar Miss Emulous X3091#  
Sinclair Traveler 6Q1  
Sinclair Ms Emulous 0V5  
Sinclair Delivery 7UD6  
Sinclair K Bty 8PV43 6FA5#

Individual Performance					EPD's				
BW	ADJ. WW	WR	ADJ. YW	YR	CED	BW	WW	MILK	YW
64	590	105	1057	110	12	-3.1	47	28	75
Individual Performance					Mat				
ADG	Act. IMF	REA/100 lbs	SEN	SM	SW	SF	SG	SB	
3.87	2.84	1.09	4	76	55	47	30	77	

**Dam's Production WR: 1 @ 105 YR: 1 @ 110**

Another solid calving ease bull that will sire calves with cowman style!

**107 SINCLAIR JUSTIFIED L99**  
REG: \*20871005 | DOB: 03/08/23 | TATTOO: L99

KG Justified 3023#  
**Sinclair Justified J574** 20256119  
Sinclair Primrose 9L4 7FT12

N Bar Emulation EXT#  
**Sinclair C Pride 2X9 9NZ12** 17212148  
Sinclair C Pride 9NZ12 4NI42#

Connealy Judgment  
KG Miss Magic 1443  
Sinclair Plains Boss 5B02  
Sinclair Primrose 7FT12  
Emulation N Bar 5522#  
N Bar Primrose 2424  
Pinebank Waigroup 41/97#  
Sinclair Blackbird 4NI42 1C4

Individual Performance					EPD's				
BW	ADJ. WW	WR	ADJ. YW	YR	CED	BW	WW	MILK	YW
84	612	100	1054	100	3	1.6	44	26	79
Individual Performance					Mat				
ADG	Act. IMF	REA/100 lbs	SEN	SM	SW	SF	SG	SB	
3.71	2.88	1.09	8	84	42	70	38	108	

**Dam's Production WR: 8 @ 98 YR: 3 @ 98**

Growth type bull from a long-lived productive cow family.



N Bar Emulation EXT, the Most Influential Bull in the Breed the Past Century and the Maternal Grand sire of Lot 107.

**108 SINCLAIR JUSTIFIED L554**  
REG: 20870969 | DOB: 02/12/23 | TATTOO: L554

KG Justified 3023#  
**Sinclair Justified J574** 20256119  
Sinclair Primrose 9L4 7FT12

Sinclair Exquisite 9X6  
**Sinclair Lady J53** 20263115  
Sinclair Lady 3TL68 1X68

Connealy Judgment  
KG Miss Magic 1443  
Sinclair Plains Boss 5B02  
Sinclair Primrose 7FT12  
N Bar Emulation EXT#  
Sinclair K Bty 9P31 V149#  
Sinclair Timeless 8BA4#  
Sinclair Lady 1X68 2P60

Individual Performance					EPD's				
BW	ADJ. WW	WR	ADJ. YW	YR	CED	BW	WW	MILK	YW
72	531	94	945	98	8	-0.5	36	27	71
Individual Performance					Mat				
ADG	Act. IMF	REA/100 lbs	SEN	SM	SW	SF	SG	SB	
2.42	2.5	1.22	14	90	37	64	40	104	

**Dam's Production WR: 1 @ 94 YR: 1 @ 98**

Low birth sire that comes from a young cow that has the look of a long-lasting productive cow.





# SINCLAIR JUSTIFIED L283

REG: \*20872792 | DOB: 03/04/23 | TATTOO: L283

KG Justified 3023#  
Sinclair Justified J575 20256116  
Sinclair Enchantress 9SG13

Sinclair Line-XX 2H1  
Sinclair Ms Emulous 8HX2 19279853  
Sinclair Ms Emulous 2V25 D80

Connealy Judgment  
KG Miss Magic 1443  
Sinclair Elation 6SX1  
Sinclair Enchantress 6HX26  
Sinclair Line X 8XV6  
Sinclair Primrose 9IT13 5R47  
N Bar Emulation Ext A1747  
N Bar Miss Emulous A404

Individual Performance					EPD's				
BW	ADJ. WW	WR	ADJ. YW	YR	CED	BW	WW	MILK	YW
80	531	94	931	93	12	-2.3	36	30	61

Individual Performance				Mat	\$ Values				
ADG	Act. IMF	REA/100 lbs	SEN	\$M	\$W	\$F	\$G	\$B	
1.45	3.22	1.24	15	86	46	38	36	74	

Dam's Production WR: 4 @ 98 YR: 3 @ 92

Calving ease Justified from an efficient cow family, the kind that raise a large percent of calf weight compared to their bodyweight, good stuff!



KG Justified 3023, the Grand sire of Lots 109, 110 & 111.



# SINCLAIR JUSTIFIED L648

REG: \*20833644 | DOB: 02/28/23 | TATTOO: L648

KG Justified 3023#  
Sinclair Justified J580 20256052  
Sinclair C Pride 9BA21 9NZ12

Vermilion Spur G3309  
Sinclair Primrose J197 20213408  
Sinclair Primrose 8BT3 7F4

Connealy Judgment  
KG Miss Magic 1443  
Sinclair IN Time 6BT39  
Sinclair C Pride 9NZ12 4NI42#  
Connealy Spur#  
Vermilion Lass 5216  
BT Right Time 24J#  
Sinclair Primrose 7F4 A14

Individual Performance					EPD's				
BW	ADJ. WW	WR	ADJ. YW	YR	CED	BW	WW	MILK	YW
72	657	116	923	106	8	-0.8	54	28	85

Individual Performance				Mat	\$ Values				
ADG	Act. IMF	REA/100 lbs	SEN	\$M	\$W	\$F	\$G	\$B	
2.42	2.73	1.15	7	90	59	49	34	83	

Dam's Production WR: 1 @ 116 YR: 1 @ 106

Low birth weight with some added growth mixed in this bull.



# SINCLAIR JUSTIFIED L559

REG: \*20872262 | DOB: 02/13/23 | TATTOO: L559

KG Justified 3023#  
Sinclair Justified J580 20256052  
Sinclair C Pride 9BA21 9NZ12

Reisig Longmire 8326  
Sinclair K Bty J22 20267261  
Sinclair K Bty 1XX17 7V53

Connealy Judgment  
KG Miss Magic 1443  
Sinclair IN Time 6BT39  
Sinclair C Pride 9NZ12 4NI42#  
S A V Renown 3439#  
BUF Eriskay 7417  
Sinclair Emulation XXP#  
Sinclair K Bty 7V53 H023#

Individual Performance					EPD's				
BW	ADJ. WW	WR	ADJ. YW	YR	CED	BW	WW	MILK	YW
72	563	96	982	96	7	-1.0	44	25	76

Individual Performance				Mat	\$ Values				
ADG	Act. IMF	REA/100 lbs	SEN	\$M	\$W	\$F	\$G	\$B	
3.39	2.41	1.17	9	92	46	53	32	85	

Dam's Production WR: 1 @ 96 YR: 1 @ 96

Come join us for a free lunch on sale day!



112



# SINCLAIR REVOLVER L662

REG: \*20833610 | DOB: 03/07/23 | TATTOO: L662

Rito Revolve OR5  
ACR Revolver 4102 18163869  
Sinclair Eriskay 2N1 7883#

Sinclair X-Changer 2FE9  
Sinclair Blkbird 0FV22 7OC10 20045306  
Sinclair Blkbird 7OC10 J472

R R Rito 707#  
Ideal 1456 of 8103 8114  
D H D Traveler 6807#  
Papa Eriskay 7883  
Sinclair Emulation 5522 XP#  
Sinclair Blackie 7V3 2P18  
O C C Great Plains 943G#  
N Bar Blackbird C349

Individual Performance					EPD's				
BW	ADJ. WW	WR	ADJ. YW	YR	CED	BW	WW	MILK	YW
76	558	99	1099	107	8	1.1	43	20	86

Individual Performance				Mat	\$ Values				
ADG	Act. IMF	REA/100 lbs	SEN	\$M	\$W	\$F	\$G	\$B	
3.39	2.53	1.26	-1	31	33	68	22	89	

Dam's Production WR: 1 @ 99 YR: 1 @ 107

Solid genetics here to work with, lots of proven animals that have done well in multiple environments.



# REF SIRE ACR REVOLVER 4102

REG: +18163869 | DOB: 09/06/14 | TATTOO: 4102

R R Rito 707#  
Rito Revolve OR5 14038735  
Ideal 1456 of 8103 8114

D H D Traveler 6807#  
Sinclair Eriskay 2N1 7883# 14311816  
Papa Eriskay 7883

Rito N Bar  
Eriskay of Rollin Rock 3  
Ideal 8103 of Eldo 5110 5213  
Ideal 8114 of Eldo 5110 3127  
Q A S Traveler 23-4#  
Bemindful Maid D H D 0807#  
Cottontail Maternal POWER464#  
Eriskay D H D 2826

CED	BW	WW	YW	SC	MILK	DOC	MARB	REA	\$M	\$W	\$F	\$B	\$C
6	2.1	38	82	.43	19	6	.04	.28	19	27	88	106	156

Revolver, already mature upon arrival, descends from a lineage of proven quality, with a sire contributing the valuable Rito 707 genetics widely appreciated by discerning breeders. His dam has produced high-quality offspring across various locations, demonstrating her ability to adapt and excel in different environments. He brings to the table not only a sound structure but also a commendable temperament.

**113 SINCLAIR REVOLVER L660**  
REG: \*20872822 | DOB: 03/06/23 | TATTOO: L660

Rito Revolve OR5  
**ACR Revolver 4102** 18163869  
Sinclair Eriskay 2N1 7883#

Sinclair Promise 4RP15  
**Sinclair Blkbird 8RE2 6SX13** 19168738  
Sinclair Blkbird 6SX13 4X5#

R R Rito 707#  
Ideal 1456 of 8103 8114  
D H D Traveler 6807#  
Papa Eriskay 7883  
Sinclair Rito Promise 0R12  
Sinclair Eriskay 5E3 2N11#  
Sinclair Vision 35X12  
Sinclair Blkbird 4X5 7RL33

Individual Performance					EPD's				
BW	ADJ. WW	WR	ADJ. YW	YR	CED	BW	WW	MILK	YW
80	588	104	1015	99	8	0.2	39	25	70
Individual Performance				Mat	\$ Values				
ADG	Act. IMF	REA/100 lbs	SEN	\$M	\$W	\$F	\$G	\$B	
3.71	2.67	1.19	7	57	39	52	22	74	

**Dam's Production** WR: 3 @ 107 YR: 2 @ 98

Solid bull from a productive tribe of the Blackbird cow family.



**115 SINCLAIR EXQUISITE L337**  
REG: \*20833595 | DOB: 03/08/23 | TATTOO: L337

N Bar Emulation EXT#  
**Sinclair Exquisite 9X15** 19602928  
Rito Majesty 5A61 of F0203

Sinclair Timeless 8BA4#  
**Sinclair Lady Ida 5TL52 7X26** 18154100  
Sinclair Lady Ida 7X26 B154

Emulation N Bar 5522#  
N Bar Primrose 2424  
PBC 707 1M F0203#  
B A F Excel Lady 2104  
Sinclair IN Time 6BT39  
Sinclair Blackbird 2P8 7079#  
N Bar Emulation EXT#  
N Bar Lady Ida X2912

Individual Performance					EPD's				
BW	ADJ. WW	WR	ADJ. YW	YR	CED	BW	WW	MILK	YW
81	538	95	938	94	10	-1.5	29	22	50
Individual Performance				Mat	\$ Values				
ADG	Act. IMF	REA/100 lbs	SEN	\$M	\$W	\$F	\$G	\$B	
2.10	2.93	1.16	19	62	32	40	26	67	

**Dam's Production** WR: 7 @ 99 YR: 2 @ 96

Generations of wide based and deep bodied genetics in this calving ease bull's background.



N Bar Lady Ida X2912 (B154), the foundation third dam of L337

**114 SINCLAIR REVOLVER L141**  
REG: \*20872786 | DOB: 03/18/23 | TATTOO: L141

Rito Revolve OR5  
**ACR Revolver 4102** 18163869  
Sinclair Eriskay 2N1 7883#

Sinclair Emulation XXP#  
**Sinclair Ms Emulous 9XX7** 19475190  
Sinclair Ms Emulous 3TL3#

R R Rito 707#  
Ideal 1456 of 8103 8114  
D H D Traveler 6807#  
Papa Eriskay 7883  
N Bar Emulation EXT#  
N Bar Primrose Y3051#  
Sinclair Timeless 8BA4#  
Sinclair Ms Emulous 8XV3

Individual Performance					EPD's				
BW	ADJ. WW	WR	ADJ. YW	YR	CED	BW	WW	MILK	YW
95	579	103	1021	103	3	1.9	42	22	85
Individual Performance				Mat	\$ Values				
ADG	Act. IMF	REA/100 lbs	SEN	\$M	\$W	\$F	\$G	\$B	
3.71	2.69	1.06	-3	48	32	84	26	110	

**Dam's Production** WR: 3 @ 101 YR: 2 @ 106

Lots of happy customers over the years have enjoyed the XXP-Timeless cross similar to the dam of this bull. Come check out this bull and take him home, I bet you will be one of the happy customers!



**116 SINCLAIR EXQUISITE L351**  
REG: \*20833596 | DOB: 03/10/23 | TATTOO: L351

N Bar Emulation EXT#  
**Sinclair Exquisite 9X15** 19602928  
Rito Majesty 5A61 of F0203

Q A S Traveler 23-4#  
**Sinclair Majesty 6Q2 5A61** 18520673  
Rito Majesty 5A61 of F0203

Emulation N Bar 5522#  
N Bar Primrose 2424  
PBC 707 1M F0203#  
B A F Excel Lady 2104  
Band 234 of Ideal 3163#  
Q A S Blackbird Eve 601 1  
PBC 707 1M F0203#  
B A F Excel Lady 2104

Individual Performance					EPD's				
BW	ADJ. WW	WR	ADJ. YW	YR	CED	BW	WW	MILK	YW
100	634	112	991	100	1	2.6	40	23	57
Individual Performance				Mat	\$ Values				
ADG	Act. IMF	REA/100 lbs	SEN	\$M	\$W	\$F	\$G	\$B	
3.55	2.96	1.11	19	48	39	49	24	73	

**Dam's Production** WR: 5 @ 104 YR: 4 @ 96

This bull will fix bad udders and bad feet and sire calves that will grow well and have substance to them.



QAS Traveler 23-4, the Maternal Grand sire of Lot 116.



# 117 SINCLAIR JUSTIFIED L359

REG: \*20833621 | DOB: 03/10/23 | TATTOO: L359

KG Justified 3023#  
**Sinclair Justified J575** 20256116  
Sinclair Enchantress 9SG13

N Bar Emulation Ext A1747  
**Sinclair C Pride 9V1 3RC31** 19472529  
Sinclair C Pride 3RC31 7X34#

Connealy Judgment  
KG Miss Magic 1443  
Sinclair Elation 6SX1  
Sinclair Enchantress 6HX26  
N Bar Emulation EXT#  
N Bar Clova Pride U3031  
Sinclair Entrepreneur 8R101  
Sinclair C Pride 7X34 K325#

Individual Performance					EPD's				
BW	ADJ. WW	WR	ADJ. YW	YR	CED	BW	WW	MILK	YW
89	563	100	955	96	4	0.1	53	28	91
Individual Performance				Mat	\$ Values				
ADG	Act. IMF	REA/100 lbs	SEN	\$M	\$W	\$F	\$G	\$B	
2.10	3.23	1.09	-1	65	54	64	36	101	

**Dam's Production** WR: 1 @ 100 YR: 1 @ 96

Nice bull here from a cow that stems from a cherished tribe of the Clova Pride cow family. 7X34 has many daughters and granddaughters that are productive and the cow mans type.



118



# 118 SINCLAIR JUSTIFIED L371

REG: \*20833599 | DOB: 03/11/23 | TATTOO: L371

KG Justified 3023#  
**Sinclair Justified J575** 20256116  
Sinclair Enchantress 9SG13

Sinclair Exactly 4U2  
**Sinclair Entense 9UR20 Y728** 19475088  
Sinclair Entense Y728

Connealy Judgment  
KG Miss Magic 1443  
Sinclair Elation 6SX1  
Sinclair Enchantress 6HX26  
Sinclair Executive 9XV2  
Sinclair Lady OR109 03S3  
O C C Missing Link 830M#  
Shadybrook Ever Entense 491G

Individual Performance					EPD's				
BW	ADJ. WW	WR	ADJ. YW	YR	CED	BW	WW	MILK	YW
89	586	104	1045	105	6	0.1	53	28	96
Individual Performance				Mat	\$ Values				
ADG	Act. IMF	REA/100 lbs	SEN	\$M	\$W	\$F	\$G	\$B	
5.16	2.98	0.97	0	83	52	54	25	79	

**Dam's Production** WR: 3 @ 99 YR: 1 @ 105

This bull comes from a dam that is a wide load, buy this bull and he will sire calves that weigh up come sale day!



N Bar Emulation EXT A1747, the High Performance EXT Son and Maternal Grandsire of Lot 117.



Sinclair C Pride 7X34 K325, the Great Grandam of Lot 117.



Shadybrook Ever Entense 491G, the Great Grandam of Lot 118.



KG Justified 3023, the Grandsire of Lots 117 & 118.

Original N-Bar Genetics Working For You

# Staying true to the Legacy





**SINCLAIR X-PLUS L149**  
 REG: \*20833577 | DOB: 03/22/23 | TATTOO: L149

Sinclair Emulation XXP#  
**Sinclair X-Plus 8XX14** 19169720  
 Sinclair M Emulous 4ET1 D47#

Sinclair Dynasty 3WCD7  
**Sinclair C Pride 8WC16 2D1** 19279818  
 Sinclair C Pride 2D1 7XT19#

N Bar Emulation EXT#  
 N Bar Primrose Y3051#  
 N Bar Explosion TNT#  
 N Bar Miss Emulous B514  
 Wandering CRK Dynasty JRM 2F#  
 Sinclair Eriskay 2N1 7883#  
 Sinclair Fortunate Son#  
 Sinclair C Pride 7XT19 K811

Individual Performance					EPD's				
BW	ADJ. WW	WR	ADJ. YW	YR	CED	BW	WW	MILK	YW
81	612	104			4	0.8	39	21	69
Individual Performance				Mat	\$ Values				
ADG	Act. IMF	REA/100 lbs	\$EN	\$M	\$W	\$F	\$G	\$B	
1.29	3	1.22	12	46	35	63	30	93	

**Dam's Production WR: 4 @ 98 YR: 1 @ 102**

Solid bull with many productive and hard-working genetics backing him up.



**SINCLAIR X-PLUS L162**  
 REG: \*20833580 | DOB: 03/26/23 | TATTOO: L162

Sinclair Emulation XXP#  
**Sinclair X-Plus 8XX14** 19169720  
 Sinclair M Emulous 4ET1 D47#

Sinclair Rollin Coal 5K2  
**Sinclair Ms Emulous 8KF4** 19275411  
 Sinclair Ms Emulous 6SX30

N Bar Emulation EXT#  
 N Bar Primrose Y3051#  
 N Bar Explosion TNT#  
 N Bar Miss Emulous B514  
 Sinclair Broker 3RC33  
 Sinclair Ms Emulous 1FE23  
 Sinclair Vision 3SX12  
 Sinclair Ms Emulous 1XT2

Individual Performance					EPD's				
BW	ADJ. WW	WR	ADJ. YW	YR	CED	BW	WW	MILK	YW
87	565	100			3	0.0	34	23	62
Individual Performance				Mat	\$ Values				
ADG	Act. IMF	REA/100 lbs	\$EN	\$M	\$W	\$F	\$G	\$B	
2.10	3.59	1.20	15	43	34	57			

**Dam's Production WR: 3 @ 105 YR: @**

This bull combines many of the high customer satisfaction sires from the last decade. I would expect this bull to follow in those footsteps.

### A LITTLE PIECE OF HISTORY...

The N-Bar Ranch, located on the east side of the Snowy Mountains at Flatwillow Creek's head, was established by the Montana Sheep Company in 1880. By 1885, Thomas Cruse from Helena had acquired the company, including its land and livestock. In 1888, Cruse purchased Newman Brothers' cattle in Montana, which were based near the Wyoming line on Powder River and bore the N-Bar brand. Consequently, the ranch was renamed N Bar Ranch, with its headquarters on upper Flatwillow Creek in southeastern Fergus County.

In 1913, Cruse sold his ranch and livestock to the Judith Farms Company, formed by the Bolter family, Al Smith of Helena, and Austin Warr, Sr., of Lewistown, to manage the ranch as small farms. In the fall of 1929, E.B. Milburn bought Austin Warr Jr.'s stake in the company, and his brother, Jack Milburn, became the ranch manager. Jack introduced a registered Angus program. For three generations, the Milburn family worked the ranch, making significant contributions to the cattle industry. Under Tom Elliott's ownership, the ranch gained fame for producing the notable Black Angus bull, N Bar Emulation EXT, known for his maternal influence and carcass values.





121

**121 SINCLAIR LONGMIRE L44**  
 REG: \*20872815 | DOB: 03/01/23 | TATTOO: L44

S A V Renown 3439#  
**Reisig Longmire 8326** 19448009  
 BUF Eriskay 7417

O C C Eureka 865E#  
**Sinclair Lady 8TR3 7RL30** 19368919  
 Sinclair Lady 7RL30 1C8

Rito 707 of Ideal 3407 7075  
 S A V Blackcap May 4136  
 N Bar Emulation EXT#  
 J Bar 7 Eriskay Q13-71K1#  
 O C C Backstop 888B#  
 Blackbird of R R 1204#  
 Sinclair Rito Legacy 3R9  
 Sinclair Lady 1C8 4465

Individual Performance					EPD's				
BW	ADJ. WW	WR	ADJ. YW	YR	CED	BW	WW	MILK	YW
83	546	97	1050	106	8	-0.3	36	22	68
Individual Performance					\$ Values				
ADG	Act. IMF	REA/100 lbs	SEN	\$M	\$W	\$F	\$G	\$B	
3.06	3.15	1.23	6	55	34	41	24	66	

**Dam's Production** WR: 3 @ 98 YR: 1 @ 106

Stout thick and muscular would describe this bull.



Sinclair Rito Legacy 3R9, the Maternal Great Grandsire of Lot 121.



Sinclair Lady 1C8 4465, the Famous Great Grandam of Lot 121.



122

**122 SINCLAIR LONGMIRE L517**  
 REG: \*20833627 | DOB: 02/08/23 | TATTOO: L517

S A V Renown 3439#  
**Reisig Longmire 8326** 19448009  
 BUF Eriskay 7417

BT Right Time 24J#  
**Sinclair Enchantress 0BT16** 20045304  
 Sinclair Enchantress 7KF3

Rito 707 of Ideal 3407 7075  
 S A V Blackcap May 4136  
 N Bar Emulation EXT#  
 J Bar 7 Eriskay Q13-71K1#  
 Leachman Right Time#  
 Sitz Everelda Entense 1905  
 Sinclair Rollin Coal 5K2  
 Sinclair Enchantress 1SX12

Individual Performance					EPD's				
BW	ADJ. WW	WR	ADJ. YW	YR	CED	BW	WW	MILK	YW
72	560	99	1006	98	9	-2.0	36	25	64
Individual Performance					\$ Values				
ADG	Act. IMF	REA/100 lbs	SEN	\$M	\$W	\$F	\$G	\$B	
3.71	4.27	1.18	8	76	40	36	29	65	

**Dam's Production** WR: 2 @ 112 YR: 1 @ 98

Thick bull from a young productive dam, recipe for success in the cow mans world.

**123 SINCLAIR LONGMIRE L561**  
 REG: \*20833631 | DOB: 02/13/23 | TATTOO: L561

S A V Renown 3439#  
**Reisig Longmire 8326** 19448009  
 BUF Eriskay 7417

N Bar Nitro  
**Sinclair Blkbird 0N13 8RE2** 20045451  
 Sinclair Blkbird 8RE2 6SX13

Rito 707 of Ideal 3407 7075  
 S A V Blackcap May 4136  
 N Bar Emulation EXT#  
 J Bar 7 Eriskay Q13-71K1#  
 N Bar Emulation EXT#  
 N Bar Kinochtry Beauty 4288  
 Sinclair Promise 4RP15  
 Sinclair Blkbird 6SX13 4X5#

Individual Performance					EPD's				
BW	ADJ. WW	WR	ADJ. YW	YR	CED	BW	WW	MILK	YW
64	586	102	1015	99	9	-1.8	36	25	64
Individual Performance					\$ Values				
ADG	Act. IMF	REA/100 lbs	SEN	\$M	\$W	\$F	\$G	\$B	
1.61	3.07	1.16	10	79	40	33	23	56	

**Dam's Production** WR: 1 @ 103 YR: @

Low birth with thickness and fleshing ability bred in this lot.

**124 SINCLAIR LONGMIRE L583**  
 REG: \*20833634 | DOB: 02/16/23 | TATTOO: L583

S A V Renown 3439#  
**Reisig Longmire 8326** 19448009  
 BUF Eriskay 7417

Sinclair Emulous 8TD1  
**Sinclair Blkbird 0TD7 8WC10** 20045455  
 Sinclair Blkbird 8WC10 8R41

Rito 707 of Ideal 3407 7075  
 S A V Blackcap May 4136  
 N Bar Emulation EXT#  
 J Bar 7 Eriskay Q13-71K1#  
 Vance Top Dawg#  
 N Bar Miss Emulous A404  
 Sinclair Dynasty 3WCD7  
 Sinclair Blkbird 8R41 5P101

Individual Performance					EPD's				
BW	ADJ. WW	WR	ADJ. YW	YR	CED	BW	WW	MILK	YW
78	568	101	984	96	10	-2.0	31	24	56
Individual Performance					\$ Values				
ADG	Act. IMF	REA/100 lbs	SEN	\$M	\$W	\$F	\$G	\$B	
1.77	3.64	1.04	13	76	35	33	23	55	

**Dam's Production** WR: 2 @ 103 YR: 1 @ 96

Good rascal here from a long-lived productive cow family, good potential for calving ease.



125



**127 SINCLAIR EXECUTIVE L124**  
REG: \*20872784 | DOB: 03/13/23 | TATTOO: L124

Sinclair Black Iron 7UR26  
**Sinclair Executive 9UF3** 19472545  
Sinclair Lady Ida 8XV12 C52#

Sinclair Exactly 4U2  
Sinclair Erica 2FE2 8BT12  
N Bar Emulation Ext V722  
N Bar Lady Ida Z1453  
R R Rito 707#  
Ideal 4465 of 6807 4286  
N Bar Double Time D0116  
N Bar Enchantress 4908#

Sinclair Rito Legacy 3R9  
**Sinclair Enchantress 2RL7** 17255087  
N Bar Enchantress X4129

Individual Performance					EPD's				
BW	ADJ. WW	WR	ADJ. YW	YR	CED	BW	WW	MILK	YW
100	619	110	1053	106	-2	2.7	46	22	75
Individual Performance					\$ Values				
ADG	Act. IMF	REA/100 lbs	SEN	SM	SW	SF	SG	SB	
3.23	2.5	1.17	9	59	41	41	19	60	

**Dam's Production WR:** 10 @ 106 **YR:** 6 @ 104

Same story on this lot as lot 126, efficient cow production and the ability to do it over many years. Remember cows were made to walk and grass to stand still.



**125 SINCLAIR LONGMIRE L277**  
REG: \*20872791 | DOB: 03/03/23 | TATTOO: L277

S A V Renown 3439#  
**Reisig Longmire 8326** 19448009  
BUF Eriskay 7417

Rito 707 of Ideal 3407 7075  
S A V Blackcap May 4136  
N Bar Emulation EXT#  
J Bar 7 Eriskay Q13-71K1#  
F C R Elation Lad 652  
Miss Emulous 243  
O C C Great Plains 943G#  
Sinclair K Bty 0BA15 6E4#

Emulation 31#  
**Sinclair K Bty 4A6 2OC12** 17803221  
Sinclair K Bty 2OC12 0BA15

Individual Performance					EPD's				
BW	ADJ. WW	WR	ADJ. YW	YR	CED	BW	WW	MILK	YW
87	540	96	1001	101	7	-0.8	28	21	55
Individual Performance					\$ Values				
ADG	Act. IMF	REA/100 lbs	SEN	SM	SW	SF	SG	SB	
1.94	3.24	1.17	19	56	27	37	25	62	

**Dam's Production WR:** 8 @ 96 **YR:** 4 @ 100

This thick Longmire son comes from the right kind of Emulation 31 daughter, easy fleshing and always proud of her calves.



Emulation 31, the Maternal Grandsire of Lot 125.



N Bar Enchantress X4129, the Foundation Grandam of Lot 127 and a maternal sister to N Bar Shadow.



**128 SINCLAIR PROMISE L439**  
REG: \*20833604 | DOB: 03/30/23 | TATTOO: L439

Sinclair Promise 6RE2  
**Sinclair Promise 8PR8** 19284016  
Sinclair K Bty 4FX25 8R31

Sinclair Promise 4RP15  
Sinclair Primrose 1V2 145K  
Sinclair Emulation 0F4  
Sinclair K Bty 8R31 04M3  
Emulation N Bar 5522#  
N Bar Enchantress 4908#  
Sinclair Preview 2TL6  
Sinclair Lady 1FE24 9XT69

Sinclair Emulation 2F7  
**Sinclair Lady 8FB30 5TA11** 19326229  
Sinclair Lady 5TA11 1FE24

Individual Performance					EPD's				
BW	ADJ. WW	WR	ADJ. YW	YR	CED	BW	WW	MILK	YW
94	639	113			-3	2.8	58	25	95
Individual Performance					\$ Values				
ADG	Act. IMF	REA/100 lbs	SEN	SM	SW	SF	SG	SB	
3.55	3.57	0.95	-2	76	50	71	34	105	

**Dam's Production WR:** 3 @ 109 **YR:** 1 @ 105

Solid bull here for you to work with, remember our guarantee on our bulls see inside front cover for details. We want you to be happy with your purchase. We couldn't do it without you, the customer.



**126 SINCLAIR EXECUTIVE L121**  
REG: \*20833574 | DOB: 03/13/23 | TATTOO: L121

Sinclair Black Iron 7UR26  
**Sinclair Executive 9UF3** 19472545  
Sinclair Lady Ida 8XV12 C52#

Sinclair Exactly 4U2  
Sinclair Erica 2FE2 8BT12  
N Bar Emulation Ext V722  
N Bar Lady Ida Z1453  
N Bar Emulation EXT#  
N Bar Enchantress 4908#  
N Bar Emulation Ext Z52  
N Bar Miss Emulous X3091#

N Bar Shadow X4124  
**Sinclair Ms Emulous 2S17 D80#** 17255080  
N Bar Miss Emulous A404

Individual Performance					EPD's				
BW	ADJ. WW	WR	ADJ. YW	YR	CED	BW	WW	MILK	YW
87	537	95	950	95	5	-0.3	34	22	56
Individual Performance					\$ Values				
ADG	Act. IMF	REA/100 lbs	SEN	SM	SW	SF	SG	SB	
2.58	3.27	1.11	19	65	35	38	35	74	

**Dam's Production WR:** 10 @ 104 **YR:** 7 @ 106

If you have the make more with less frame of mind look at this bull. Disciplined mature cow size with productivity! This kind of genetic make up has been profitable for many years for many happy customers.



N Bar Shadow X4124, The Rare and Valuable Legendary Maternal Sire and Maternal Grandsire of Lot 126.



129

**129 SINCLAIR RIGHT TIME L006**  
 REG: \*20833653 | DOB: 02/26/23 | TATTOO: L006

Leachman Right Time#  
**BT Right Time 24J** 13360311#  
 Sitz Everelda Entense 1905

N Bar Emulation EXT#  
**Sinclair Blkbird 9X59 2459#** 16361090  
 Ideal 2459 of 6807 8351

N Bar Emulation EXT#  
 Leachman Erica 0025  
 Traveler 124 G D A R#  
 Sitz Everelda Entense 1791#  
 Emulation N Bar 5522#  
 N Bar Primrose 2424  
 D H D Traveler 6807#  
 Ideal 8351 Shoshone Bob 2314

Individual Performance					EPD's				
BW	ADJ. WW	WR	ADJ. YW	YR	CED	BW	WW	MILK	YW
ET	627	100	1061	100	-3	6.1	49	26	86
Individual Performance					Mat				
ADG	Act. IMF	REA/100 lbs	\$EN	\$M	\$W	\$F	\$G	\$B	
3.87	3.11	1.16	-3	45	32	61	22	83	

**Dam's Production WR: 10 @ 110 YR: 9 @ 107**

Lots to like in this ET calf. Run him in the high country run him in the low country he has the genetic makeup to excel wherever you need to use him.



Sinclair Blkbird 9X59 2459, the Dam of Lot 129.



BT Right Time 24J, the Proven Female Producing Sire of Lot 129.

**130 SINCLAIR BOLD DRIVER L386**  
 REG: \*20853603 | DOB: 03/14/23 | TATTOO: L386

Pine Drive Big Sky#  
**Leachman Bold Driver** 10654031#  
 Leachman Blueblood 9532#

Sinclair Emperor 6X02  
**Sinclair K Bty 80V6 5TA32** 19289338  
 Sinclair K Bty 5TA32 2MX12

LEMAR Eileenmere Lad 549#  
 Benlock Blackcap 108K  
 Schearbrook Shoshone#  
 L A R Emulation Lass 6524#  
 Sinclair Emperor 0XT51  
 Sinclair Ms Emulous 2V20 A40  
 Sinclair Preview 2TL6  
 Sinclair K Bty 2MX12 0V41

Individual Performance					EPD's				
BW	ADJ. WW	WR	ADJ. YW	YR	CED	BW	WW	MILK	YW
97	615	109	999	101	-2	1.8	38	22	61
Individual Performance					Mat				
ADG	Act. IMF	REA/100 lbs	\$EN	\$M	\$W	\$F	\$G	\$B	
2.58	2.19	1.15	11	61	36	61	25	86	

**Dam's Production WR: 3 @ 101 YR: 1 @ 101**

We reached back a bit and brought some time-tested genetics to the front with Bold Driver. Use this good bull with confidence.

**131 SINCLAIR NIGHTHAWK L265**  
 REG: \*20833586 | DOB: 03/01/23 | TATTOO: L265

Ankonian Cornhusker#  
**N Bar Nighthawk** 11403481  
 N Bar Enchantress 4908#

Sinclair X-Changer 2FE9  
**Sinclair Blkbird 6FV14 7X45** 18486502  
 Sinclair Blkbird 7X45 2P8

Ankonian Cornerstone  
 Ankony 8F78 Erica 341B6  
 Basin Emulation 5953  
 Coffey Enchantress 424  
 Sinclair Emulation 5522 XP#  
 Sinclair Blackie 7V3 2P18  
 N Bar Emulation EXT#  
 Sinclair Blackbird 2P8 7079#

Individual Performance					EPD's				
BW	ADJ. WW	WR	ADJ. YW	YR	CED	BW	WW	MILK	YW
87	629	112	1079	109	1	1.4	45	27	82
Individual Performance					Mat				
ADG	Act. IMF	REA/100 lbs	\$EN	\$M	\$W	\$F	\$G	\$B	
1.94	3.84	0.74	-4	54	43	58	22	80	

**Dam's Production WR: 6 @ 102 YR: 3 @ 103**

Nighthawk used on a 2FE9 daughter should make easy fleshing thick cattle, this bull looks like he will do just that.



N Bar Nighthawk, a Featured Long-Time N Bar Ranch Herdsire and the Sire of Lot 131.



**132 SINCLAIR EMULATION L004**  
 REG: \*20833651 | DOB: 02/22/23 | TATTOO: L004

Emulation N Bar 5522#  
**N Bar Emulation EXT** 10776479#  
 N Bar Primrose 2424



Sinclair Timeless 8BA4#  
**Sinclair K Bty 2X7 6MB8#** 17199714  
 Sinclair K Bty 6MB8 B345

Emulation 31#  
 Ankony 8F78 Lass 8F275  
 Emulation 31#  
 Primrose N Bar 9962  
 Sinclair IN Time 6BT39  
 Sinclair Blackbird 2P8 7079#  
 N Bar Musketeer 2M13  
 N Bar Kinochtry Bty B345

Individual Performance					EPD's				
BW	ADJ. WW	WR	ADJ. YW	YR	CED	BW	WW	MILK	YW
ET	538	100	916	100	7	-0.8	37	30	70
Individual Performance					\$ Values				
ADG	Act. IMF	REA/100 lbs	\$EN	\$M	\$W	\$F	\$G	\$B	
1.61	2.37	1.18	5	46	45	80	23	103	

**Dam's Production WR:** 9 @ 107 **YR:** 6 @ 108

Lots of goodness in this bull, his donor dam is the kind of cow we feel blessed to have and glad we have been able to see what her sons can do for our customers. Long-lasting productiveness with the pounds put where they should be.



Sinclair K BTY 2X7 6MB8, the Dam of Lot 132.

**134 SINCLAIR LONGMIRE L627**  
 REG: \*20833641 | DOB: 02/21/23 | TATTOO: L627

S A V Renown 3439#  
**Reisig Longmire 8326** 19448009  
 BUF Eriskay 7417

Loyning Equinox 7  
**Sinclair K Bty 0EQ1 7FE4** 20563428  
 Sinclair K Bty 7FE4 E010#

Rito 707 of Ideal 3407 7075  
 S A V Blackcap May 4136  
 N Bar Emulation EXT#  
 J Bar 7 Eriskay Q13-71K1#  
 Horse Butte 6141 of 3141  
 Jad Ester 3750  
 Sinclair Emulation TNT 27F3  
 N Bar Kinochtry Bty V1495H

Individual Performance					EPD's				
BW	ADJ. WW	WR	ADJ. YW	YR	CED	BW	WW	MILK	YW
66	580	101	1030	100	11	-2.8	39	25	67
Individual Performance					\$ Values				
ADG	Act. IMF	REA/100 lbs	\$EN	\$M	\$W	\$F	\$G	\$B	
1.94	2.58	1.34	5	64	44	43	25	68	

**Dam's Production WR:** 2 @ 110 **YR:** 2 @ 106

Another low birth Longmire son from a sharp, right kind daughter of Equinox. Another bonus is this bull comes from a wonderfully made productive cow family.



Sinclair K BTY 7FE4 E010, The Foundation Grandam of Lot 134.

**133 SINCLAIR LONGMIRE L606**  
 REG: \*20872820 | DOB: 02/18/23 | TATTOO: L606

S A V Renown 3439#  
**Reisig Longmire 8326** 19448009  
 BUF Eriskay 7417

Sinclair Emulation XXP#  
**Sinclair Edella OXX10 2V5** 20045296  
 Sinclair Edella 2V5 9JP9

Rito 707 of Ideal 3407 7075  
 S A V Blackcap May 4136  
 N Bar Emulation EXT#  
 J Bar 7 Eriskay Q13-71K1#  
 N Bar Emulation EXT#  
 N Bar Primrose Y3051#  
 N Bar Emulation Ext A1747  
 Sinclair Edella 9JP9 7RL46

Individual Performance					EPD's				
BW	ADJ. WW	WR	ADJ. YW	YR	CED	BW	WW	MILK	YW
72	530	94	980	96	9	-2.0	37	21	67
Individual Performance					\$ Values				
ADG	Act. IMF	REA/100 lbs	\$EN	\$M	\$W	\$F	\$G	\$B	
3.55	4.83	1.07	8	74	37	44	39	83	

**Dam's Production WR:** 2 @ 99 **YR:** 1 @ 96

Low birth sire with thickness and added maternal value with XXP thrown in there for good measure.



**135 SINCLAIR LONGMIRE L643**  
 REG: \*20833643 | DOB: 02/25/23 | TATTOO: L643

S A V Renown 3439#  
**Reisig Longmire 8326** 19448009  
 BUF Eriskay 7417

Sinclair Net Present Value#  
**Sinclair Blkcap Mc 3PV2 1LB2** 17451887  
 Sinclair Blkcap Mc 1LB2 7RR4

Rito 707 of Ideal 3407 7075  
 S A V Blackcap May 4136  
 N Bar Emulation EXT#  
 J Bar 7 Eriskay Q13-71K1#  
 N Bar Prime Time D806#  
 Ideal 4465 of 6807 4286  
 Royal Rito L 2  
 Sinclair Blkcap Mc 7RR4 1C11

Individual Performance					EPD's				
BW	ADJ. WW	WR	ADJ. YW	YR	CED	BW	WW	MILK	YW
80	614	107	1030	100	8	-0.5	42	28	78
Individual Performance					\$ Values				
ADG	Act. IMF	REA/100 lbs	\$EN	\$M	\$W	\$F	\$G	\$B	
2.26	3.37	1.13	-4	52	44	53	32	84	

**Dam's Production WR:** 6 @ 115 **YR:** 5 @ 109

Good stout bull here from a productive cow. Thank you to our customers old and new! Please let us know if you have any questions.



Reisig Longmire 8326, the Sire of Lots 133, 134 & 135.

# Registered Heifers

**138** **SINCLAIR EDELLA L270 7A1**  
 REG: 20863695 | DOB: 03/02/23 | TATTOO: L270

Coleman Doc 2261  
**Coleman Keen 717** <sup>18928879</sup>  
 Coleman Eriskay 308

Wulffs Ext 6106#  
 Coleman Donna 989  
 Coleman Charlo 0256#  
 Sinclair Eriskay 2N1 7883#  
 Emulation 31#  
 N Bar Enchantress WP F3619  
 Sinclair Emulation XXP#  
 Sinclair Edella 10K1 7X53

*Edella  
 Cow  
 Family*

Individual Performance				EPD's			
BW	ADJ. WW	WR	CED	BW	WW	MILK	YW
80	533	98	5	0.5	45	21	69
Dam's Production			Mat		\$ Values		
WR	YR		\$EN	\$M	\$W	\$F	\$B
5 @ 106	1 @ 107		19	76	44	59	

This heifer, from an independent, hardworking dam and a lineage of Emulation and Keen, offers a strong foundation for innovative breeding projects.

**137** **SINCLAIR K BTY L340 9E2**  
 REG: 20863698 | DOB: 03/09/23 | TATTOO: L340

Coleman Doc 2261  
**Coleman Keen 717** <sup>18928879</sup>  
 Coleman Eriskay 308

N Bar Explosion#  
**Sinclair K Bty 9E2 1P16** <sup>19602897</sup>  
 Sinclair K Bty 1P16 E118

Wulffs Ext 6106#  
 Coleman Donna 989  
 Coleman Charlo 0256#  
 Sinclair Eriskay 2N1 7883#  
 N Bar Emulation EXT#  
 N Bar Kinochtry Beauty 4288  
 N Bar Prime Time D806#  
 N Bar Kinochtry Beauty Z1925

*Kinochtry  
 Beauty  
 Cow  
 Family*

Individual Performance				EPD's			
BW	ADJ. WW	WR	CED	BW	WW	MILK	YW
66	585	108	8	-1.4	49	24	81
Dam's Production			Mat		\$ Values		
WR	YR		\$EN	\$M	\$W	\$F	\$B
2 @ 111	2 @ 108		11	77	51	72	97

This eye-catching heifer, with her refined front end, comes from a lineage known for producing standout herd sires like Sinclair Entrepreneur 8R101. Versatile and valuable, she's an asset to any herd.

**139** **SINCLAIR LADY L385 7X14**  
 REG: 20863700 | DOB: 03/13/23 | TATTOO: L385

N Bar Emulation EXT#  
**Sinclair Exquisite OX2** <sup>19919831</sup>  
 Sinclair Lady 3M18 4465#

N Bar Emulation EXT#  
**Sinclair Lady 7X14 3T9** <sup>18835174</sup>  
 Sinclair Lady 3T9 4465#

Emulation N Bar 5522#  
 N Bar Primrose 2424  
 N Bar Moderation 9957  
 Ideal 4465 of 6807 4286

Emulation N Bar 5522#  
 N Bar Primrose 2424  
 N Bar Explosion TNT#  
 Ideal 4465 of 6807 4286

*Lady  
 Cow  
 Family*

Individual Performance				EPD's			
BW	ADJ. WW	WR	CED	BW	WW	MILK	YW
83	536	99	2	0.9	35	21	57
Dam's Production			Mat		\$ Values		
WR	YR		\$EN	\$M	\$W	\$F	\$B
5 @ 100	2 @ 96		19	60	34	69	86

N Bar Emulation EXT and the Lady cow family feature prominently on both sides, ensuring long-term genetic excellence.

To better serve our customers, we are making every effort to provide our customer's cattle with better sale marketing exposure.

Let one of the Sinclair Team Representatives know when you are ready to market your cattle and we will try our best to assist you in achieving the top dollar possible to add value to your bottom line.

Fred Saunders is an experienced livestock marketing professional that strives to help earn top dollar for your cattle. He is a friend of the Sinclair program and has been through the offering. Please call him if he can help you successfully market your cattle.



Your personal representative for  
 Northern Livestock Video Auction



**Heart S Livestock  
 Marketing, LLC**

Contact Me for all your  
 Marketing Needs!

**Fred Saunders**

4149 Elk Creek Rd - PO Box 117  
 Grass Range, MT 59032

406-788-9331 | fredsanders9@gmail.com

Enhancing your marketing options  
 the personal and professional way.

Licensed and Bonded





**140 SINCLAIR K BTY L132 OBT12**  
REG: 20863692 | DOB: 03/15/23 | TATTOO: L132

N Bar Emulation EXT#  
**Sinclair Exquisite 9X15** 19602928  
Rito Majesty 5A61 of F0203

BT Right Time 24J#  
**Sinclair K Bty OBT12 1TX11** 19981196  
Sinclair K Bty 1TX11 8XE8

Emulation N Bar 5522#  
N Bar Primrose 2424  
PBC 707 1M F0203#  
B A F Excel Lady 2104  
Leachman Right Time#  
Sitz Everelda Entense 1905  
Sinclair XX 8X28  
Sinclair K Bty 8XE8 5R2

*Kinochtry  
Beauty  
Cow  
Family*

Individual Performance				EPD's			
BW	ADJ. WW	WR	CED	BW	WW	MILK	YW
83	583	108	3	1.6	46	21	73
Dam's Production			Mat		\$ Values		
WR	YR	SEN	\$M	\$W	\$F	\$G	\$B
2 @ 101	@	15	72	42	58		

This heifer, from the robust Kinochtry Beauty cow family, relates to Sinclair Emulation XXP's brother, offering traits like quality udders, sturdy feet, and fertility from her distinguished pedigree.



**143 SINCLAIR ERICA L170**  
REG: 20889694 | DOB: 04/04/23 | TATTOO: L170

Sinclair Executive 9UF3  
**Sinclair Executive J17** 20257164  
Sinclair Primrose 15X15

Sinclair Emulation 5522 XP#  
**Sinclair Erica 2FE2 8BT12** 17199707  
Sinclair Erica 8BT12 A18

Sinclair Black Iron 7UR26  
Sinclair Lady Ida 8XV12 C52#  
Sinclair Vision X 857  
Sinclair Primrose 80C35 4F3  
Emulation N Bar 5522#  
N Bar Primrose Y3051#  
BT Right Time 24J#  
Rito Majesty 4A18 of F0203

*Erica  
Cow  
Family*

Individual Performance				EPD's			
BW	ADJ. WW	WR	CED	BW	WW	MILK	YW
87	537	99	3	2.5	40	22	67
Dam's Production			Mat		\$ Values		
WR	YR	SEN	\$M	\$W	\$F	\$G	\$B
10 @ 103	5 @ 106	16	75	34	41	31	72

Lot 143, from a resilient 12-year-old Wyoming cow, boasts genetics for longevity, with both sire and his dam actively producing into their teens.



**141 SINCLAIR PRIMROSE L78 8P3**  
REG: 20863688 | DOB: 03/06/23 | TATTOO: L78

Connealy Niobrara 5451  
**Connealy Gary** 18869442  
Hertha of Conanga 1639

N Bar Prime Time D806#  
**Sinclair Primrose 8P3 E002** 16027246  
N Bar Primrose 1985B

Connealy Confidence Plus#  
Britha of Conanga 167  
Connealy Consensus#  
Herra of Conanga 4462  
Gardens Prime Time#  
N Bar Miss Emulous A404  
N Bar Emulation EXT#  
Primrose N Bar 8881

*Primrose  
Cow  
Family*

Individual Performance				EPD's			
BW	ADJ. WW	WR	CED	BW	WW	MILK	YW
67	484	89	9	-1.0	44	19	84
Dam's Production			Mat		\$ Values		
WR	YR	SEN	\$M	\$W	\$F	\$G	\$B
13 @ 97	8 @ 97	8	51	38	85	56	140

This quality heifer, from a 16-year-old dam with good feet and udder, alongside modern sire genetics from Gary on the top side, offers a reliable foundation for your herd.



**144 SINCLAIR MS EMULOUS L146**  
REG: 20863693 | DOB: 03/20/23 | TATTOO: L146

N Bar Emulation EXT#  
**Sinclair Exquisite 9X15** 19602928  
Rito Majesty 5A61 of F0203

N Bar Moderation 9955 U1869  
**Sinclair Ms Emulous OMD2** 20561985  
Sinclair Ms Emulous 4XX4

Emulation N Bar 5522#  
N Bar Primrose 2424  
PBC 707 1M F0203#  
B A F Excel Lady 2104  
N Bar Moderation 9955#  
N Bar Kinochtry Beauty 1946  
Sinclair Emulation XXP#  
Sinclair Ms Emulous D80

*Ms  
Emulous  
Cow  
Family*

Individual Performance				EPD's			
BW	ADJ. WW	WR	CED	BW	WW	MILK	YW
99	576	106	-8	5.5	50	17	84
Dam's Production			Mat		\$ Values		
WR	YR	SEN	\$M	\$W	\$F	\$G	\$B
2 @ 99	1 @ 104	10	56	27	71	28	99

This heifer uniquely blends the genetics of the efficient D80 cow with other durable, productive cows known for their disciplined mature size.



**142 SINCLAIR PRIMROSE L289 7WC31**  
REG: 20863696 | DOB: 03/05/23 | TATTOO: L289

N Bar Emulation EXT#  
**Sinclair Emulation XXP** 15355048  
N Bar Primrose Y3051#

Sinclair Dynasty 3WCD7  
**Sinclair Primrose 7WC31 3R06** 18826254  
Sinclair Primrose 3R06 9X64

Emulation N Bar 5522#  
N Bar Primrose 2424  
N Bar Emulation EXT#  
N Bar Primrose 2429#  
Wandering CRK Dynasty JRM 2F#  
Sinclair Eriskay 2N1 7883#  
Sinclair Original 8R104  
Sinclair Primrose 9X64 B1#

*Primrose  
Cow  
Family*

Individual Performance				EPD's			
BW	ADJ. WW	WR	CED	BW	WW	MILK	YW
80	595	110	1	1.8	49	20	87
Dam's Production			Mat		\$ Values		
WR	YR	SEN	\$M	\$W	\$F	\$G	\$B
5 @ 101	2 @ 102	-6	37	41	76	32	108

This heifer features triple Primrose genetics and links to 2424's dam multiple times. She blends the renowned Primrose family with Sinclair Eriskay 2N1 7883's proven lineage.



**145 SINCLAIR ENCHANTRESS L235**  
REG: 20889581 | DOB: 05/08/23 | TATTOO: L235

Sinclair Dynasty 3WCD7  
**Sinclair Dynasty 7WC17** 18826235  
Sinclair Primrose 1G13 6E11#

Cole Creek Cedar Ridge 1V#  
**Sinclair Enchantress 5CR4** 18154704  
Sinclair Enchantress 3X9

Wandering CRK Dynasty JRM 2F#  
Sinclair Eriskay 2N1 7883#  
Sinclair Grass Master#  
Sinclair Primrose 6E11 Z194  
Cole Creek Black Cedar 46P#  
Cole Creek Clovanada 49S#  
N Bar Emulation EXT#  
Sinclair Enchantress 6S20

*Enchantress  
Cow  
Family*

Individual Performance				EPD's			
BW	ADJ. WW	WR	CED	BW	WW	MILK	YW
74	600	111	12	-1.6	41	28	66
Dam's Production			Mat		\$ Values		
WR	YR	SEN	\$M	\$W	\$F	\$G	\$B
7 @ 104	1 @ 109	10	73	49	52	25	77

This heifer's grandsire sired over 70 calves in one year, and her Cedar Ridge lineage indicates strong potential for her to excel as a productive cow in your herd.



### 146 SINCLAIR LADY IDA L409

REG: 20889582 | DOB: 03/24/23 | TATTOO: L409

Sinclair Vision 3SX12  
**Sinclair Elation 6SX1** 18488262  
Sinclair C Pride 2G72 7X34

Sinclair Emulation XXP#  
**Sinclair Lady Ida 7XX2 3RM6** 18829774  
Sinclair Lady Ida 3RM6 1JP1

Sinclair Vision X 8S7  
Sinclair K Bty OF1 2V3  
Sinclair Grass Master#  
Sinclair C Pride 7X34 K325#  
N Bar Emulation EXT#  
N Bar Primrose Y3051#  
Sinclair Pioneer 1RF1  
Sinclair Lady Ida 1JP1 9X13

*Lady  
Ida Cow  
Family*

Individual Performance				EPD's			
BW	ADJ. WW	WR	CED	BW	WW	MILK	YW
87	587	108	9	0.4	42	27	74
Dam's Production			Mat	\$ Values			
WR	YR	SEN	SM	SW	SF	SG	SB
4 @ 102	2 @ 96	4	72	43	55	33	88

Observing this heifer and her pedigree, the immediate standout traits are her easy fleshing ability and productivity, crucial yet frequently underestimated aspects of successful ranching.



### 149 SINCLAIR ENCHANTRESS L74

REG: 20863687 | DOB: 03/06/23 | TATTOO: L74

Sinclair Black Iron 7UR26  
**Sinclair Executive 9UF3** 19472545  
Sinclair Lady Ida 8XV12 C52#

Sinclair Executive 9XV2  
**Sinclair Enchantress 7U26** 18807095  
Sinclair Enchantress 5TA19

Sinclair Exactly 4U2  
Sinclair Erica 2FE2 8BT12  
N Bar Emulation Ext V722  
N Bar Lady Ida Z1453  
N Bar Emulation Ext V722  
N Bar Primrose Y3051#  
Sinclair Preview 2TL6  
Sinclair Enchantress 2RL1

*Enchantress  
Cow  
Family*

Individual Performance				EPD's			
BW	ADJ. WW	WR	CED	BW	WW	MILK	YW
82	561	104	3	0.2	42	19	68
Dam's Production			Mat	\$ Values			
WR	YR	SEN	SM	SW	SF	SG	SB
5 @ 101	1 @ 95	20	79	39	54		

This heifer appears capable of weaning a large, robust calf, exceeding expectations for her size. Her lineage, backed by cows exemplifying efficient production, confirms this potential.



### 147 SINCLAIR Q MOTHER L367 4XX59

REG: 20863699 | DOB: 03/11/23 | TATTOO: L367

S A V Renown 3439#  
**Reisig Longmire 8326** 19448009  
BUF Eriskay 7417

Sinclair Emulation XXP#  
**Sinclair Q Mother 4XX59** 17923629  
Sinclair Q Mother 6R109

Rito 707 of Ideal 3407 7075  
S A V Blackcap May 4136  
N Bar Emulation EXT#  
J Bar 7 Eriskay Q13-71K1#  
N Bar Emulation EXT#  
N Bar Primrose Y3051#  
R R Rito 707#  
N Bar Queen Mother 9955F

*Queen  
Mother  
Cow  
Family*

Individual Performance				EPD's			
BW	ADJ. WW	WR	CED	BW	WW	MILK	YW
65	495	91	8	-2.1	37	18	68
Dam's Production			Mat	\$ Values			
WR	YR	SEN	SM	SW	SF	SG	SB
8 @ 100	3 @ 101	2	43	34	56	25	81

This heifer, from a cow with a strong production history, suggests long-term productivity. She presents a valuable mix of Rito and Emulation genetics.



### 150 SINCLAIR DONNA L127 00V16

REG: 20863691 | DOB: 03/14/23 | TATTOO: L127

N Bar Emulation EXT#  
**Sinclair Exquisite 9X15** 19602928  
Rito Majesty 5A61 of F0203

Sinclair Emperor 6X02  
**Sinclair Donna 00V16 2SX2** 19981355  
Sinclair Donna 2SX2 ORW14#

Emulation N Bar 5522#  
N Bar Primrose 2424  
PBC 707 1M F0203#  
B A F Excel Lady 2104  
Sinclair Emperor OXT51  
Sinclair Ms Emulous 2V20 A40  
Sinclair Timeless 8BA4#  
Sinclair Donna ORW14 7RD18

*Donna  
Cow  
Family*

Individual Performance				EPD's			
BW	ADJ. WW	WR	CED	BW	WW	MILK	YW
68	576	106	10	-1.5	43	20	69
Dam's Production			Mat	\$ Values			
WR	YR	SEN	SM	SW	SF	SG	SB
2 @ 100	@	15	68	43	57		

This heifer boasts solid traits, including enhanced spring of rib and muscle in her lineage.



### 148 SINCLAIR BLKCAP L370 8L1

REG: 20870995 | DOB: 03/12/23 | TATTOO: L370

KG Justified 3023#  
**Sinclair Justified J574** 20256119  
Sinclair Primrose 9L4 7FT12

Sinclair Plains Boss 5B02  
**Sinclair Blkcap 8L1 6NR16** 19168746  
Sinclair Blkcap 6NR16 1NI4

Connealy Judgment  
KG Miss Magic 1443  
Sinclair Plains Boss 5B02  
Sinclair Primrose 7FT12  
Sinclair Patriarch 3B47  
Sinclair Lady Ida 7V19 04F3  
Sinclair In Time 9RT12  
Sinclair Blkcap 1NI4 9XT0#

*Blackcap  
Cow  
Family*

Individual Performance				EPD's			
BW	ADJ. WW	WR	CED	BW	WW	MILK	YW
74	530	98	6	-0.4	41	25	78
Dam's Production			Mat	\$ Values			
WR	YR	SEN	SM	SW	SF	SG	SB
4 @ 106	2 @ 109	7	84	40	70	48	118

Plains Boss daughters stand out, including this heifer's dam, known for her superior production. Lot 148 benefits from additional Plains Boss genes via sire J574 and has notable traits from 4FX1 in her background, showcasing a robust genetic foundation.



### 151 SINCLAIR MS EMULOUS L67

REG: 20863686 | DOB: 03/04/23 | TATTOO: L67

N Bar Emulation EXT#  
**Sinclair Exquisite 0X3** 19941920  
Basin Pamela F271

Sinclair Grass Master#  
**Sinclair Ms Emulous 2G18#** 17203647  
Sinclair Ms Emulous 5PV72

Emulation N Bar 5522#  
N Bar Primrose 2424  
Basin Rainmaker 654X#  
Basin Pamela 676X#  
BT Right Time 24J#  
N Bar Primrose Y3051#  
Sinclair Net Present Value#  
N Bar Miss Emulous A404

*Ms  
Emulous  
Cow  
Family*

Individual Performance				EPD's			
BW	ADJ. WW	WR	CED	BW	WW	MILK	YW
93	560	103	-3	3.9	42	29	79
Dam's Production			Mat	\$ Values			
WR	YR	SEN	SM	SW	SF	SG	SB
9 @ 103	4 @ 101	5	61	34	72	42	114

This heifer comes from the renowned Ms Emulous family, noted for its trouble-free lineage and longevity, with her granddam productive into her 18th year.





## 65 COMMERCIAL REPLACEMENT HEIFERS

**Notice: The Commercial heifers will NOT be at the sale site. They will sell via video.**

The commercial heifers are home-raised and are selected right out of the middle of the registered replacement heifer pen. All heifers will be vaccinated with Virashield 6 VL5 Somnus and administered pour-on. Videos will be available on [Sinclaircattle.com](http://Sinclaircattle.com), [dvauction.com](http://dvauction.com) or by request. The heifers are located at Veltkamp Livestock Manhattan, MT and sell with the option to continue being developed and AI'd there, at cost. The buyer has the option to purchase 5 or more heifers on a gate cut basis. Semen available for commercial heifers at a reduced rate. Contact the Sinclair Cattle Company team for details. Commercial heifer trucking can be arranged.



# SALE DAY SEMEN SPECIAL \$20/STRAW

## Proven Heifer Bulls



**SINCLAIR TIMELESS 8BA4**  
Reg: 16027579



**SINCLAIR ECLIPSE 9X17**  
Reg: 19602966  
Proudly owned with Mountain Valley Angus



**SINCLAIR JUSTIFIED J575**  
Reg: 20256116  
Proudly Owned with JR Ranch, Lance & Lynette Cline



**SINCLAIR IN TIME 6BT39**  
Reg: 15366581  
Proudly owned with Deb Reichman, Wm & Cheryl Fairbairn



**SINCLAIR EXTREME 3VA10**  
Reg: 17508003  
Proudly Owned with Noble Angus

Sire: Sinclair  
Extreme  
4V2

# Semen Special

## Cow Makers



**SINCLAIR JUSTIFIED K555**  
Reg: 20553718  
Proudly owned with Nathan Palm



**SINCLAIR BOND K007**  
Reg: 20559401



**SINCLAIR GARY J014**  
Reg: 20250578  
Proudly owned with Gerstell Farms



**SINCLAIR JUSTIFIED J574**  
Reg: 20566119  
Proudly owned with Scott Peterson



**REISIG LONGMIRE 8326**  
19448009  
Proudly owned with Reisig Cattle,  
Gerstell Farms



**SINCLAIR EXQUISITE 0X3**  
19941920



**SINCLAIR CLOUD PEAK 504**  
18313179



**SINCLAIR DYNASTY 3WCD7**  
17790047

**CONTACT ANY OF THE  
SINCLAIR TEAM**

FRED SAUNDERS  
406-788-9331

LOGAN BAKER  
307-254-1477

LANCE CLINE  
785-564-1744

STEVE BLANKLEY II  
240-625-5415

MIKE BAZZLE  
540-421-7411

# CONVENIENCE OPTIONS

## BROADCASTING ON

This sale will be broadcast live on the internet.

**DVAuction**

*Broadcasting Real-Time Auctions*  
Real time bidding & proxy bidding available.

Never Miss An Auction Again!

Watch & Bid online for FREE!

Visit [www.DVAuction.com](http://www.DVAuction.com) and Register Today

For General Questions Please Contact our Office:

402-316-5460 or [support@dvauction.com](mailto:support@dvauction.com)



LIVE CATTLE  
AUCTIONS

1. Go to [www.CattleUSA.com](http://www.CattleUSA.com)
2. First time users must register as a viewer.
3. In the 'Live Auctions' tab select the sale that you wish to register as a buyer (only if you wish to buy) and click the 'Submit' button.
4. Fill out the required contact and banking information then click the 'Proceed' button.
5. After you have been approved as a buyer you will receive a confirmation email. On sale day, log in and click the green 'View' button for our sale. You will have the bid console available to place your online bids. Click on 'Bid Now' to place a bid.
6. The bid received by the auctioneer will be the amount showing in the 'Price' box in the bid console.

High speed internet required for viewing & bidding.

Questions call 307-684-0789

# INSURANCE

For Insurance Needs Contact: **John Goggins**  
**James Allen/Harding and Harding Insurance**  
(Mortality Insurance Only)

6 month = 4% of Purchase Price

1 year = 6% of Purchase Price

[john@westernagreporter.com](mailto:john@westernagreporter.com)

406-698-4149



**SINCLAIR**  
CATTLE COMPANY

*Thank You*

Gary Bischel

Blacktooth Large Animal Veterinary Services

Buffalo Livestock Marketing

Caryl Cammack, Caryl and Company

Sandi Hoffman

Johnson County Cattlewomen

Kate Loose, Seven Diamond Photography

Matt Lane

Dan Reinke and Family

Gordon Taylor

Warren Reinke

Roduner Family

Jared and Heidi Schafer

Thad and Heidi Stoltz and Crew

Phil Veltkamp and Crew





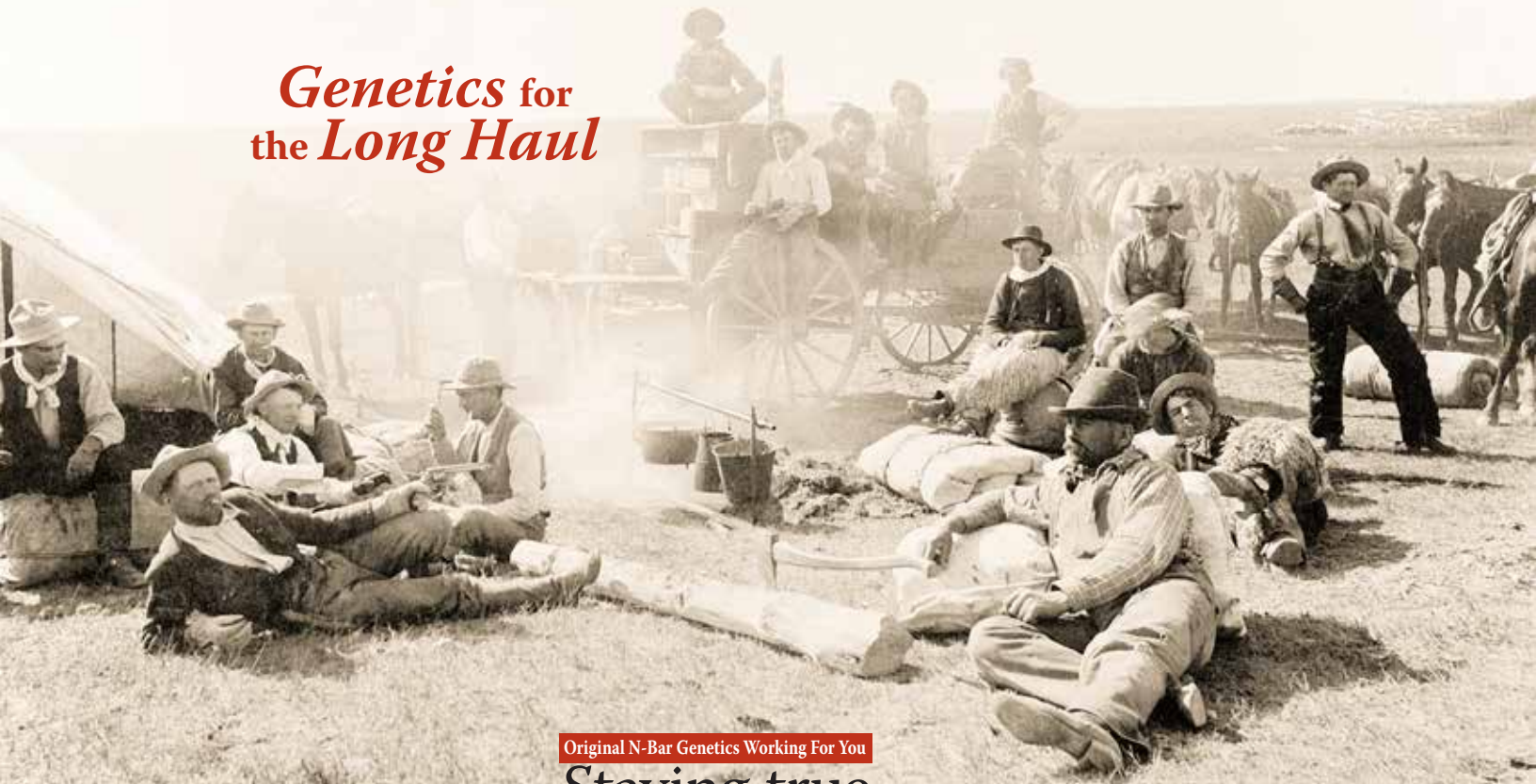
**SINCLAIR CATTLE  
COMPANY, INC.**

PO Box 1158  
Buffalo, WY 82834

# 20<sup>TH</sup> ANNUAL PRODUCTION SALE

MARCH 23, 2024 1:00 PM BUFFALO, WYOMING

*Genetics for  
the Long Haul*



Original N-Bar Genetics Working For You

Staying true  
to the Legacy